



1:1 Faculty-to-Participant  
Ratio

Mayo Clinic School of Continuous Professional Development

# MAYO CLINIC'S CURRENT CONCEPTS IN THE MANAGEMENT OF THE ADULT ECMO PATIENT



14.0 AMA  
PRA Category  
1 Credit™

**OCTOBER 27-28, 2017**

Mayo Clinic  
J. Wayne and Delores Barr Weaver  
Simulation Center Jacksonville, Florida

**COURSE DIRECTORS**

José L. Díaz-Gómez, M.D.  
Pramod K. Guru, M.B.B.S.  
Robert A. Ratzlaff, D.O.  
Gregory J. Schears, M.D.

Registration and additional course information can  
be found on our course website: [ce.mayo.edu/node/26100](http://ce.mayo.edu/node/26100)

## Course Highlights

This course takes advantage of modern educational concepts to provide clinically relevant material through realistic scenarios and simulation on ECMO initiation, management and removal. This highly interactive approach puts the learner in the position of the clinician needing to make simple thorough complex decisions commonly faced when providing ECMO. There will be limited traditional didactic presentations and a greater emphasis on interactive learning in small groups using accelerated scenarios around specific topics. Hands-on simulation will be used to expose the learner to a range of typical management issues and ECMO emergencies. For both novice and experienced ECMO care givers, the course will provide an exceptional learning environment for solid ECLS concepts and energize ECMO providers to offer state-of-the-art lifesaving opportunities for critically ill patients.

### Topics Include:

- Selection
- Device Transition-Transplantation
- Coagulation Management, Hemostasis
- Heart Failure
- Going On
- ECPR
- Circuit Emergencies
- Circuit Problem Solving
- Respiratory Failure
- Cannulation
- End of Life & Ethical Issues
- Starting a Program
- Clinical Problem Solving
- Trial Off (with ECHO assessment)
- ECMO Removal
- Transportation & Misc.

## Course Learning Objectives

Upon conclusion of this program, participants should be able to:

- Identify patient populations that may benefit from ECMO (including eCPR)
- Formulate which ECMO cannulation strategy will achieve optimal success
- Describe anticoagulation, transfusion and fluid management during ECMO
- Summarize strategies to treat pain, agitation and delirium during ECMO
- Describe use of echocardiography in hemodynamic assessment of ECMO patients
- Predict ethical dilemmas during the care of ECMO patients

## Credit

Mayo Clinic College of Medicine and Science is accredited by the Accreditation Council for Continuing Medical Education to provide continuing medical education for physicians.

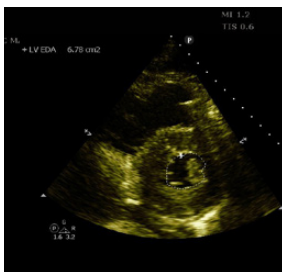
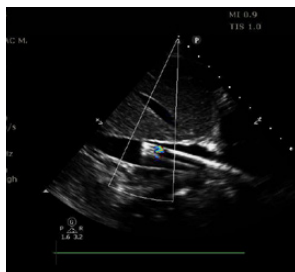
Mayo Clinic College of Medicine and Science designates this live activity for a maximum of 14.0 *AMA PRA Category 1 Credits*™. Physicians should claim only the credit commensurate with the extent of their participation in the activity.

## AOA

This program has been accredited by the American Osteopathic Association for 14.0 credits of AOA Category 2-A.

## Other Health Care Professionals

A certificate of attendance will be provided to other health care professionals for requesting credits in accordance with state nursing boards, specialty societies, or other professional associations.



## Date and Location

Mayo Clinic's Current Concepts in the Management of the Adult ECMO Patient is held October 27-28, 2017. Course headquarters are located in the Mayo Clinic J. Wayne and Delores Barr Weaver Simulation Center in Jacksonville, FL.

## Registration

To register online, visit [ce.mayo.edu/node/26100](http://ce.mayo.edu/node/26100). The registration fee includes tuition, comprehensive electronic course syllabus, continental breakfasts, break refreshments and lunch. Although it is not Mayo Clinic School of Continuous Professional Development (CPD) policy to limit the number of registrants for a course, conference room facilities may necessitate closing of enrollment; therefore, early registration is advised. A letter of confirmation will be sent upon receipt of payment.

## Registration Fees

Physicians and Scientists	\$1,700.00
Residents, Fellows, PAs, Nurses, Allied Health and Retirees	\$1,300.00

## Cancellation Policy

If you cancel your participation in this course, your registration fee, less a \$75 administrative fee, will be refunded when written notification is received by Mayo Clinic School of CPD on or before October 13, 2017. No refunds will be made after October 13, 2017. Canceled registrations are non-transferable.

## For additional information, contact:

Mayo Clinic School of Continuous Professional Development  
Website: [ce.mayo.edu](http://ce.mayo.edu)  
E-mail: [cme-jax@mayo.edu](mailto:cme-jax@mayo.edu)  
Phone: 800-462-9633

## Travel and Lodging Accommodations

Jacksonville International Airport (JAX) is located 45 minutes from Mayo Clinic. Taxis and rental cars are readily available at the airport. Travel and lodging arrangements are the sole responsibility of the individual registrant. Transportation is highly recommended, as the campus is not within walking distance to dining locations. Attendees are responsible for their own reservations.

### *Located on the Mayo Clinic campus:*

#### **Mayo Clinic Courtyard by Marriott**

14390 Mayo Blvd.  
Jacksonville, FL 32224  
800-321-2211  
Located on the Mayo Clinic Campus

### *For those seeking off-campus oceanfront accommodations:*

#### **Ponte Vedra Inn & Club**

200 Ponte Vedra Blvd.  
Ponte Vedra, FL 32082  
888-839-9145  
Located 6 miles from the Mayo Clinic Campus

#### **One Ocean Resort & Spa**

1 Ocean Blvd.  
Atlantic Beach, FL 32233  
800-874-6000  
Located 8 miles from the Mayo Clinic Campus

You may also wish to view [www.visitjacksonville.com](http://www.visitjacksonville.com) for additional accommodations as well as recreation and leisure activities.

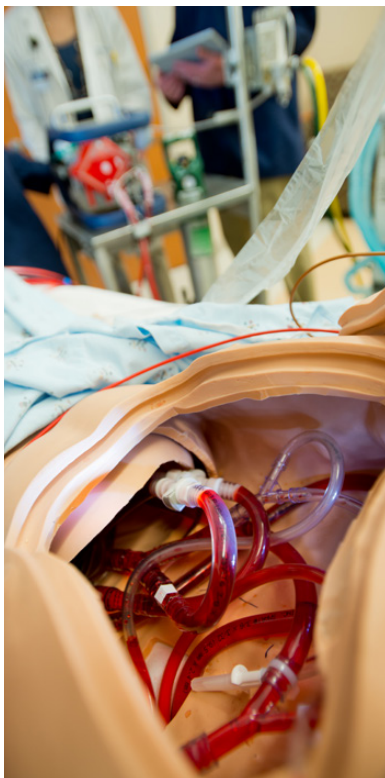
## Parking

Parking is available in multiple lots near the Stable North Building on W.M. Davis Parkway at no charge. Additional parking is available in the Mayo patient/visitor ramp adjacent to the Davis Building on Mayo Boulevard at \$3 per day on Friday and no charge on Saturday. The cost for parking is not included in the registration fee.

## Faculty

### Mayo Clinic Faculty

Caitlin L. Blau, C.C.P.  
Erol V. Belli, M.D.  
Kyle Bohman, M.D.  
Nicholas A. Braus, M.D.  
José L. Díaz-Gómez, M.D.  
Gavin D. Divertie, M.D.  
Tammy P. Friedrich, MSN, RN  
Pramod K. Guru, M.B.B.S.  
Jay A. Johnson, C.C.P.  
Philip E. Lowman, M.D.  
James R. Neal, C.C.P.  
Richard K. Patch, III, M.D.  
Bhavesh M. Patel, M.D.  
Neal M. Patel, M.D.  
Parag Patel, M.D.  
Si Pham, M.D.  
Robert A. Ratzlaff, D.O.  
J. Ross Renew, M.D.  
Gregory J. Schears, M.D.  
Troy G. Seelhammer, M.D.  
Ayan Sen, M.D.  
John M. Stulak, M.D.  
Carla P. Venegas-Borsellino, M.D.



### Guest Faculty

Jeffrey B. Riley, MHPE, CCT, CCP  
*Harrington Heart & Vascular Institute,  
University Hospitals Case Medical Center,  
Cleveland Ohio*



# PROGRAM

## Friday, October 27, 2017

- 7:00 a.m. Registration & Continental Breakfast
- 7:50 Welcome & Course Highlights:  
*Robert A. Ratzlaff, D.O., Gregory Schears, M.D., Pramod Guru, M.B.B.S., and José L. Díaz-Gómez, M.D.*
- 8:00 – 12:05 p.m. Case-Based Scenarios \* Rotating Groups; All Attendees Participate in Every Session
- A. Selection
  - B. Device Transition - Transplantation
  - C. Coagulation Management, Hemostasis
  - D. Heart Failure
- Faculty:** *Kyle Bohman, M.D., José L. Díaz-Gómez, M.D., Pramod K. Guru, M.B.B.S., Richard K. Patch, III, M.D., Bhavesh M. Patel, M.D., Parag Patel, M.D., Si Pham, M.D., Robert A. Ratzlaff, D.O., Jeff B. Riley, C.C.P., Gregory J. Schears, M.D., Troy G. Seelhammer, M.D. & Ayan Sen, M.D.*
- 12:05 – 1:00 Lunch
- 1:05 –5:20 Hands-on Simulation Groups \* Rotating Groups; All Attendees Participate in Every Session
- A. Going On
  - B. ECPR
  - C. Circuit Emergencies
  - D. Circuit Problem Solving
- Faculty:** *Caitlin L. Blau, C.C.P., José L. Díaz-Gómez, M.D., Tammy P. Friedrich, MSN, RN, Pramod K. Guru, M.B.B.S., Jay A. Johnson, C.C.P., James R. Neal, C.C.P., Robert A. Ratzlaff, D.O., Jeff B. Riley, C.C.P., Gregory J. Schears, M.D., Troy G. Seelhammer, M.D. & Ayan Sen, M.D.*
- 5:20 p.m. Adjourn

## Saturday, October 28, 2017

- 7:15 a.m. Continental Breakfast
- 8:00 – 12:05 p.m. Case-Based Scenarios \* Rotating Groups; All Attendees Participate in Every Session
- A. Respiratory Failure
  - B. Cannulation
  - C. End of Life & Ethical Issues
  - D. Starting a Program, Intra-Institutional Collaboration and Financial
- Faculty:** *Erol V. Belli, M.D., Kyle Bohman, M.D., Nicholas A. Braus, M.D., Gavin D. Divertie, M.D., Tammy P. Friedrich, MSN, RN, Philip E. Lowman, M.D., Richard K. Patch, III, M.D., Neal M. Patel, M.D., Si Pham, M.D., Jeff B. Riley, C.C.P., John M. Stulak, M.D. & Carla P. Venegas-Borsellino, M.D.*
- 12:05 – 1:00 Keynote Luncheon  
**Jeffrey B. Riley, MHPE, CCT, CCP**
- 1:05 –5:20 Hands-on Simulation Groups \* Rotating Groups; All Attendees Participate in Every Session
- A. Clinical Problem Solving
  - B. Trial Off (with ECHO assessment)
  - C. ECMO Removal
  - D. Transportation & Misc.
- Faculty:** *Caitlin L. Blau, C.C.P., José L. Díaz-Gómez, M.D., Tammy P. Friedrich, MSN, RN, Pramod K. Guru, M.B.B.S., Philip E. Lowman, M.D., James R. Neal, C.C.P., Bhavesh M. Patel, M.D., Neal M. Patel, M.D., Robert A. Ratzlaff, D.O., J. Ross Renew, M.D., Gregory J. Schears, M.D. & Ayan Sen, M.D.*
- 5:20 p.m. Adjourn

**MAYO CLINIC**  
4500 San Pablo Rd  
Jacksonville, FL 32224

Mayo Clinic School of Continuous Professional Development

# MAYO CLINIC'S CURRENT CONCEPTS IN THE MANAGEMENT OF THE ADULT ECMO PATIENT

**OCTOBER 27-28, 2017**

Mayo Clinic J. Wayne and Delores  
Barr Weaver Simulation Center  
Jacksonville, Florida

REGISTER NOW! Registration and additional course information can be found on our  
course website: [ce.mayo.edu/node/26100](http://ce.mayo.edu/node/26100)

NON-PROFIT ORG.  
U.S. POSTAGE  
**PAID**  
MAYO CLINIC