



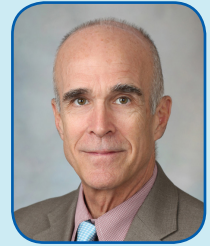
Mayo School of Continuous Professional Development

# 2016 Mayo Clinic Pathology Update

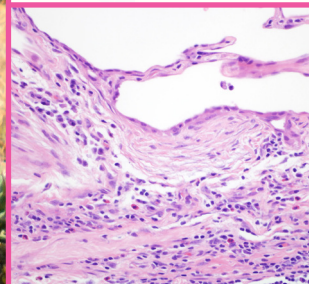
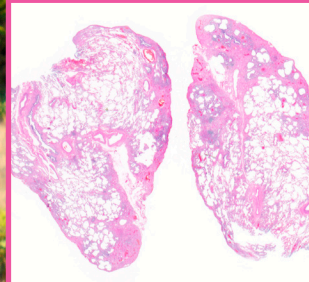
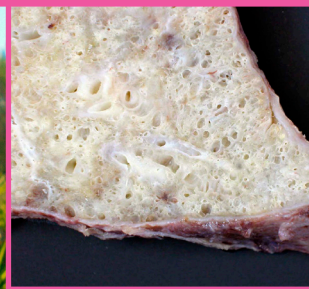
*A Tribute to the Career of Thomas V. Colby, M.D.*

**Thursday–Saturday  
February 4–6, 2016**

**Juanita Kious Waugh Auditorium  
Mayo Clinic Education Center  
Phoenix, Arizona**



Thomas V. Colby, M.D.



**\$75 Discount for Early Registration** (Offer Expires January 21, 2016)  
**Visit new website at [ce.mayo.edu](http://ce.mayo.edu)** (Keyword Search: 2016 Pathology)

**COURSE DESCRIPTION:** This 2.5 day course provides attendees an update on select diagnostic pathology topics, covering a broad range of subjects including pulmonary and mediastinal, soft tissue, gastrointestinal, genitourinary, cytology, and hematopathology. Presentations will focus on practical diagnostic challenges with updates on current terminology, classification, and molecular markers. Following lecture sessions, attendees will have an opportunity to solidify new concepts and materials with case reviews and questions provided by the speakers.

Each lecture topic is carefully selected to celebrate the distinguished career of Professor Thomas V. Colby who has published many of the seminal articles related to these entities. The first day focuses on soft tissue lesions of the mediastinum and pleura, pancreatic neoplasms, and infectious mimics of inflammatory bowel disease. The second day is devoted to pulmonary pathology topics, both neoplastic and non-neoplastic; and the final day covers thymus, genitourinary pathology, and extranodal Hodgkin lymphoma.

A special session will also be held the second day during which Dr. Colby will share some of the index cases that inspired his groundbreaking work.

**INTENDED AUDIENCE:** Pathologists, pulmonologists, pathologist assistants, pathology fellows and residents, and allied health staff with an interest in diagnostic pathology.

**LOCATION:** Juanita Kious Waugh Auditorium • Mayo Clinic Education Center  
5777 East Mayo Boulevard • Phoenix, Arizona 85054



*Mayo Clinic College of Medicine is accredited by the Accreditation Council for Continuing Medical Education to provide continuing medical education for physicians.*

©2015 Mayo Foundation for Medical Education and Research | MC8300-84

Mayo Clinic  
13400 East Shea Boulevard  
Scottsdale, Arizona 85259

NON-PROFIT ORG.  
U.S. POSTAGE  
PAID  
MAYO CLINIC

**\$75 Discount for Early Registration (offer expires January 21, 2016).** Online registration and full program details, including schedule, faculty, accommodations and registration will be available four months prior to the meeting date. Mayo School of Continuous Professional Development:

- Website: [ce.mayo.edu](http://ce.mayo.edu)
- Email: [mca.cme@mayo.edu](mailto:mca.cme@mayo.edu)
- Phone: (480) 301-4580

