

# DualKnife J™

## Electrosurgical Knife

Shorten procedure time with dissection and lifting in one device.



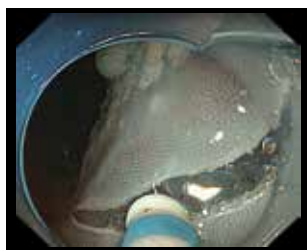
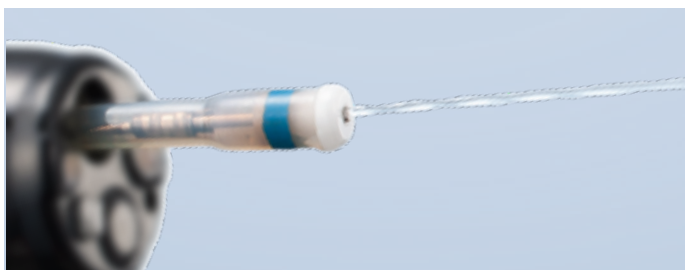
# DualKnife J™ Electrosurgical Knife

The #1 selling ESD device has evolved, with integrated submucosal injection capability supporting efficient, safe, and more reliable ESD performance.

## Features and Benefits

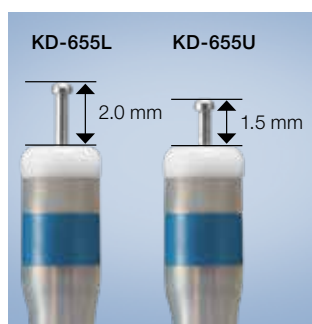
### Submucosal Injection

DualKnife J enables dissection and lifting of the mucosa by injecting saline solution into the submucosal layer. This eliminates the need to change devices, potentially leading to shorter procedure times.



### Trusted DualKnife Performance

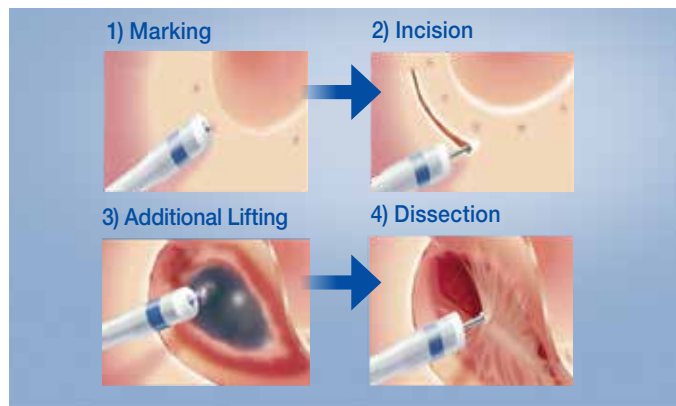
The DualKnife J includes the trusted cutting performance of the legacy DualKnife.



### Two Step Knife Length Adjustment

Facilitates optimal handling performance and helps reduce perforation risk. When pushing the slider, the knife extends and the knife length will be 2 mm (L-Length)/1.5 mm (U-Length). When pulling the slider, the knife retracts and the length will be 0.1 mm.

## ESD Workflow with DualKnife J



## Total Procedure Solutions

- **Distal attachment**  
Maintain an optimal field of view using a distal attachment.
- **Electrosurgical generator (ESG-100)**  
Reliable and easy to use, the Olympus ESG-100 electrosurgical generator's smart, versatile design and expanded performance offers procedural solutions that are suitable for state-of-the-art endoscopies such as ESD.
- **Endoscopic Flushing Pump (OFP-2)**  
The OFP-2 can deliver fluid at a desired flow rate and pressure.
  - MAJ-1681 single use tubing with bottle cap.
  - MAJ-1682 single use tubing with saline spike
- **Hemostasis management**  
Olympus offers a full line of hemostasis products to treat bleeding complications. Consider the Olympus QuickClip Pro™ hemostatic clips, Coagrasper™ (a hemostasis tool with shallow forceps used to stop bleeding), bipolar probe and NeedleMaster™ injection needles.

## Specifications

Catalog number	Maximum insertion portion diameter	Working length	Cutting knife length when extended	Needle tip length when retracted	Sterile, single-use	Built-in handle
KD-655L	2.7 mm or more	1650 mm	2.0 mm	0.1 mm	Yes	Yes
KD-655U		2300 mm	1.5 mm			

Olympus is a registered trademark of Olympus Corporation, Olympus America Inc., and/or their affiliates. | Medical devices listed may not be available for sale in all countries.

**OLYMPUS**

**OLYMPUS AMERICA INC.**

3500 Corporate Parkway, PO Box 610, Center Valley, PA 18034

For more information, contact your Olympus sales representative, or call 800-848-9024.  
[www.medical.olympusamerica.com](http://www.medical.olympusamerica.com)

©2018 Olympus America Inc. All rights reserved.  
Printed in the USA OAIET0218BRO25085