



EXALT™ Model D
Single-Use Duodenoscope
The World's First Single-Use Duodenoscope



EXALT™ Model D Single-Use Duodenoscope is designed to support your mission to deliver the highest quality patient care.

Start every ERCP with a **brand new, sterile duodenoscope** for each patient. The single-use platform delivers consistent, predictable performance. EXALT Model D Duodenoscope builds on our legacy of delivering **innovative, single-use devices** designed to enhance patient safety and streamline procedures.

Out of the box, consistent performance.

**One patient.
One duodenoscope.
One dramatic advancement
in single-use technology.**

Familiar Design

The EXALT™ Model D Single-Use Duodenoscope provides clinicians a familiar design in a single-use platform.



Lightweight, familiar design in a single-use platform



4-way bending capability at the distal tip with a range of motion comparable to reusable duodenoscopes that will not degrade over time



The elevator is designed to deliver consistent performance and facilitate **guidewire locking** at the distal tip of the duodenoscope



Designed to **facilitate image capture** and integrate with your endoscopic report writer



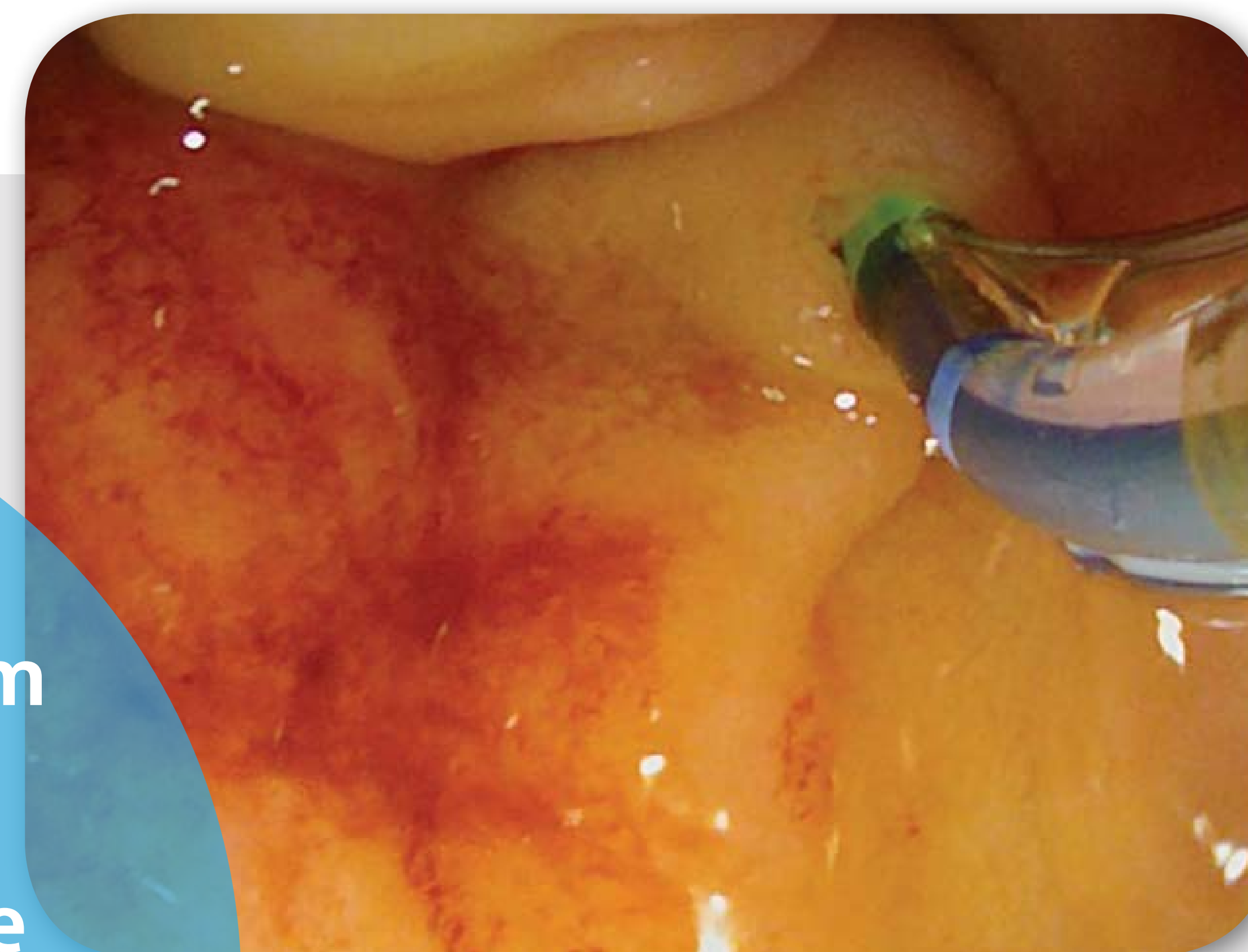
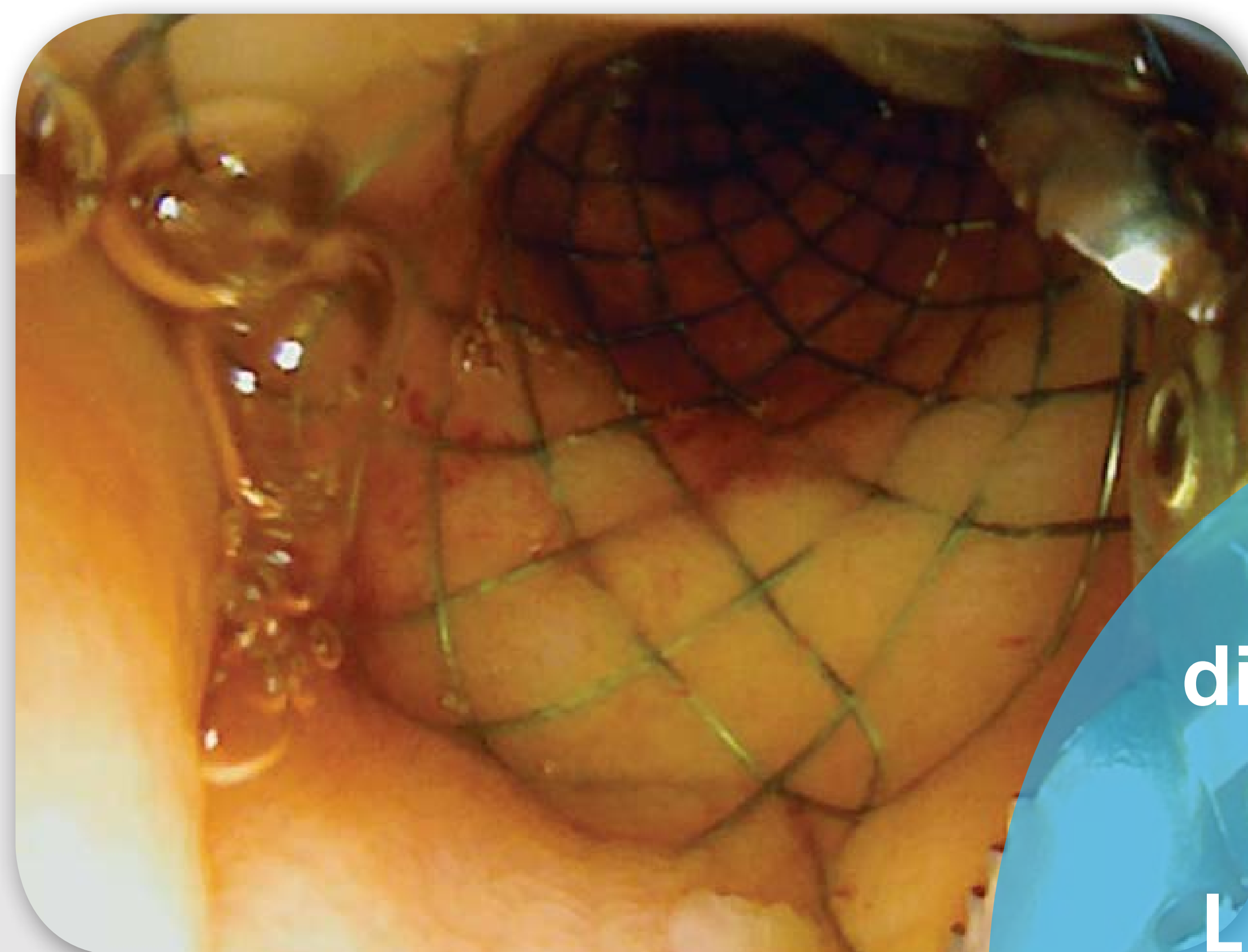
Use with the EXALT Controller, designed to provide a reduced capital footprint during ERCP



Compatible with Boston Scientific single-use endoscope accessories

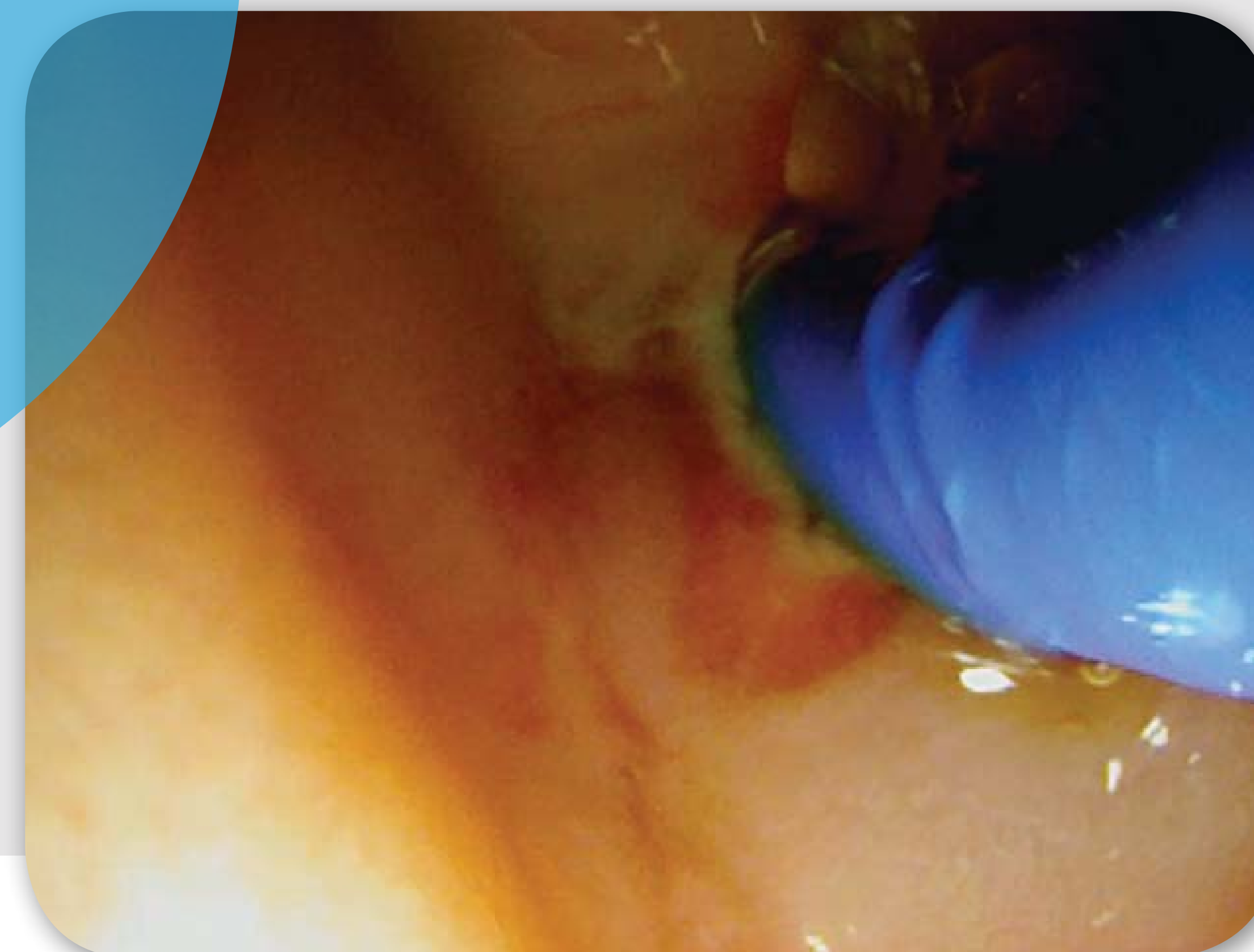
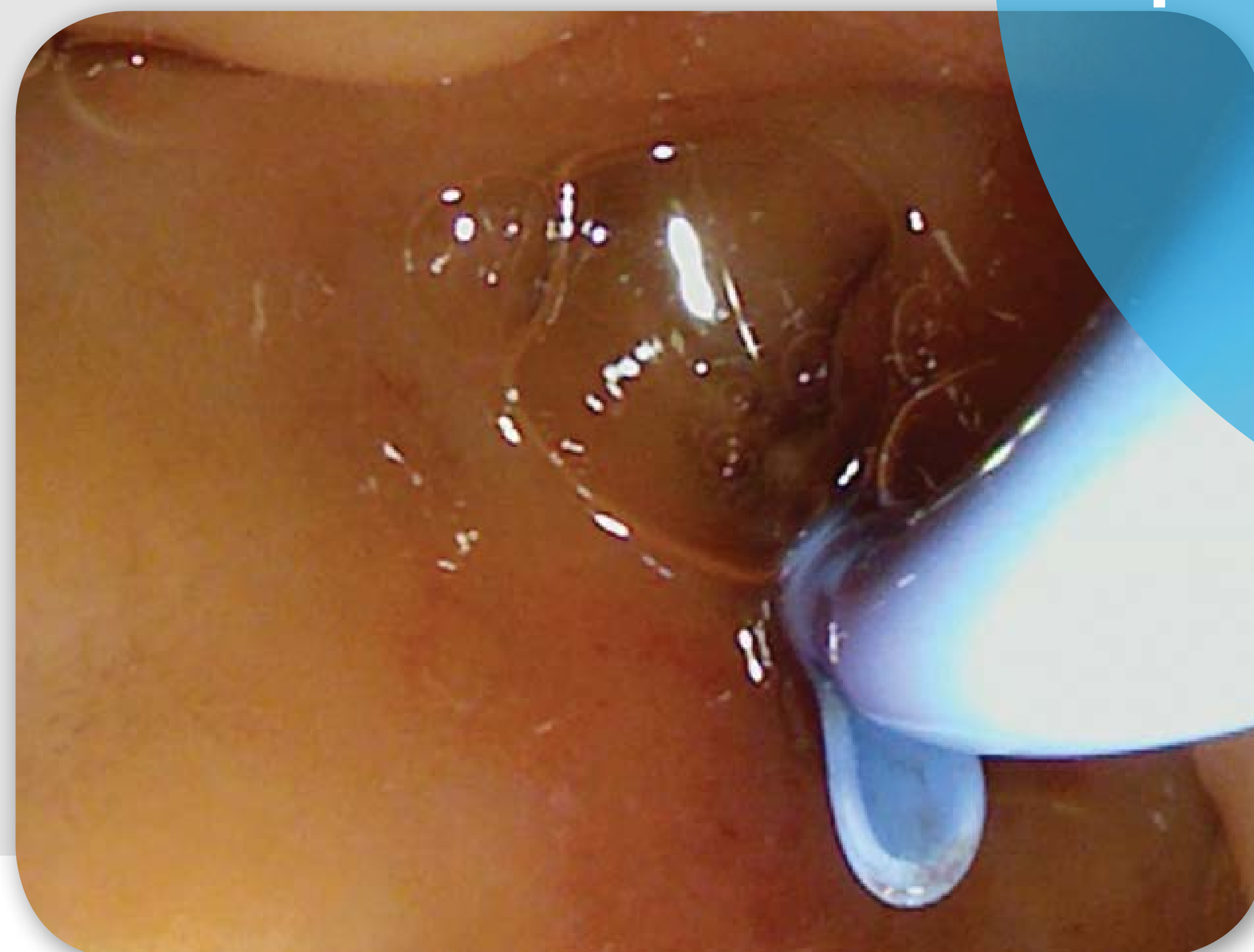
Performance

EXALT™ Model D Single-Use Duodenoscope

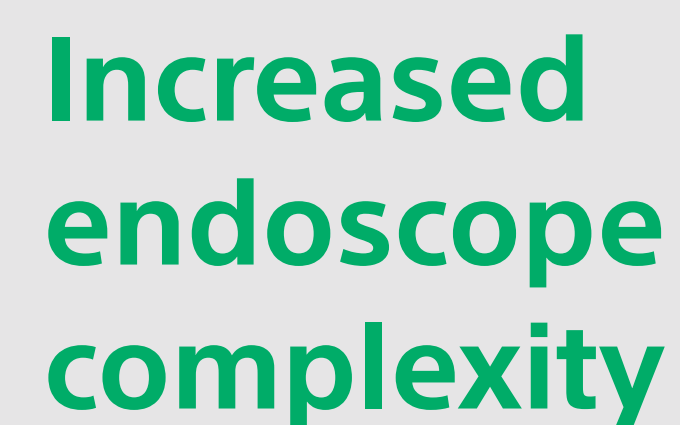


High resolution,
digital camera system
for clear imaging.

LED lighting in scope
tip designed for optimized
illumination.



Duodenoscope Reprocessing is in a State of Transition



Emergence of multi-drug resistant organisms (MDRO)

Changes in reprocessing guidance

Regular personnel turnover

Focus on auditing standards

In 2017, 72% of Joint Commission surveyed hospitals were found to be non-compliant with the IP Standard IC.02.02.01.³

3. The Joint Commission. Joint Commission 4-1-1 on Survey Enhancements: New scoring revisions for IC.02.02.01 now in effect. https://www.jointcommission.org/assets/1/23/JC_Online_Sept_5.pdf

Single-Use Efficiency

EXALT™ Model D Duodenoscope is a sterile single-use device, providing an option that foregoes reprocessing.

EXALT Model D Duodenoscope **eliminates the burden of reprocessing** reusable duodenoscopes including staff time and material costs to manage involved reprocessing recommendations. By eliminating the work load burden required to reprocess and service reusable duodenoscopes, the EXALT Model D Duodenoscope may alleviate certain burdens placed upon hospital staff.



Scope of the Problem

Duodenoscope reprocessing manuals are complex and can average*:

100+ & 150+
PAGES STEPS

Duodenoscopes are more intricate in design than other endoscopes, including a movable “elevator” mechanism at the tip which may be extremely difficult to access and clean effectively.



STORAGE



DRYING



HIGH LEVEL
DISINFECTION



VISUAL INSPECTION



MANUAL CLEAN



LEAK TEST



PRE-CLEAN

*Olympus Reprocessing Manuals

Comprehensive Integration Services

**Boston
Scientific**
Advancing science for life™

EXALT Model D
Duodenoscope



Endoscopic
Ultrasound



Colonoscopy
& EGD



Cholangioscopy



"White glove" integration services provided by our team of specialized Customer Integration Coordinators

Seamless integration with existing technology, including SpyGlass™ DS II System, Endoscopic Ultrasound, and many medical writing software

System integration helps ensure compatibility with major endoscope manufacturers allowing for full or partial adoption of EXALT Model D Duodenoscope based on your needs

Ordering Information

| UPN | Item | Description | Packaging |
|-----------|--|--|-----------|
| M00542420 | EXALT™ Model D Single-use Duodenoscope | Sterile Single-use Duodenoscope for use with EXALT Controller | Box 1 |
| M00542421 | EXALT Model D Single-use Duodenoscope | Sterile Single-use Duodenoscope for use with EXALT Controller | Box 2 |
| M00542423 | EXALT Model D Single-use Duodenoscope | Sterile Single-use Duodenoscope for use with EXALT Controller | Box 4 |
| M00542424 | EXALT Model D Single-use Duodenoscope | Sterile Single-use Duodenoscope for use with EXALT Controller | Box 8 |
| M00542430 | EXALT™ Controller | 100-240 VAC Controller for use with single-use duodenoscope (including detachable US power cable, DVI and HDMI cables) | Box 1 |



Familiar Design Specifications

| Specification | Value |
|-------------------------------------|-------|
| Retro viewing angle (°) | 5 |
| Field of view (°) | 108 |
| Depth of field (mm) | 5-60 |
| Distal end outer diameter (mm) | 15.1 |
| Insertion tube outer diameter (mm) | 11.3 |
| Working length (mm) | 1240 |
| Working channel inner diameter (mm) | 4.2 |
| Angulation range Up (°) | 120 |
| Angulation range Down (°) | 90 |
| Angulation range Right (°) | 110 |
| Angulation range Left (°) | 90 |



Boston Scientific is dedicated to environmental sustainability



95%

Solid Waste
Landfill
Avoidance

47%

Reduction
76,000 Tons
in greenhouse gas
emissions since 2009,
exceeding our goal of 35%
reduction by 2019

30%

Reduction
in Water Use
since 2009

EXALT™ Model Single-Use Duodenoscope



Decreases
waste from
disinfecting
consumables



May contribute
to reduction of
water and
energy costs



Can minimize staff
exposure to
potentially harmful
toxic chemicals

EXALT™ Model D Recycling Program

Boston Scientific has partnered with an industry leader in medical recycling to offer the EXALT Model D Recycling Program

How It Works:



Place used EXALT Model D Single-use Duodenoscope in the designated collection container.



Place closed collection container in small, 4-mil, leak-proof, biohazard labeled plastic bag and securely seal using included tie wraps. Place bag in shipping box.



Close flaps on the shipping box and tape the box closed with the included packing tape. *Make sure the UPS prepaid return shipping label is visible.



Transport sealed shipping box to designated receiving area for hand-off to UPS. A UPS pickup can be scheduled at 800-772-5657. *Return freight is prepaid. No additional charges apply.



Fill out included list of Contents Form noting the device and quantities. Place form on top of pre-bagged containers but within shipping box liner.



Boston Scientific will provide an annual sustainability report outlining the environmental benefits specific to your program.

All photographs owned by Boston Scientific.

All trademarks are the property of their respective owners.

Indications, Contraindications, Warnings and Instructions for Use can be found in the product labeling supplied with each device.

Caution: U.S. Federal law restricts this device to sale by or on the order of a physician.

**Boston
Scientific**
Advancing science for life™

Boston Scientific Corporation
300 Boston Scientific Way
Marlborough, MA 01752-1234
www.BostonScientific.com

©2020 Boston Scientific Corporation
or its affiliates. All rights reserved.

ENDO-628301-AB