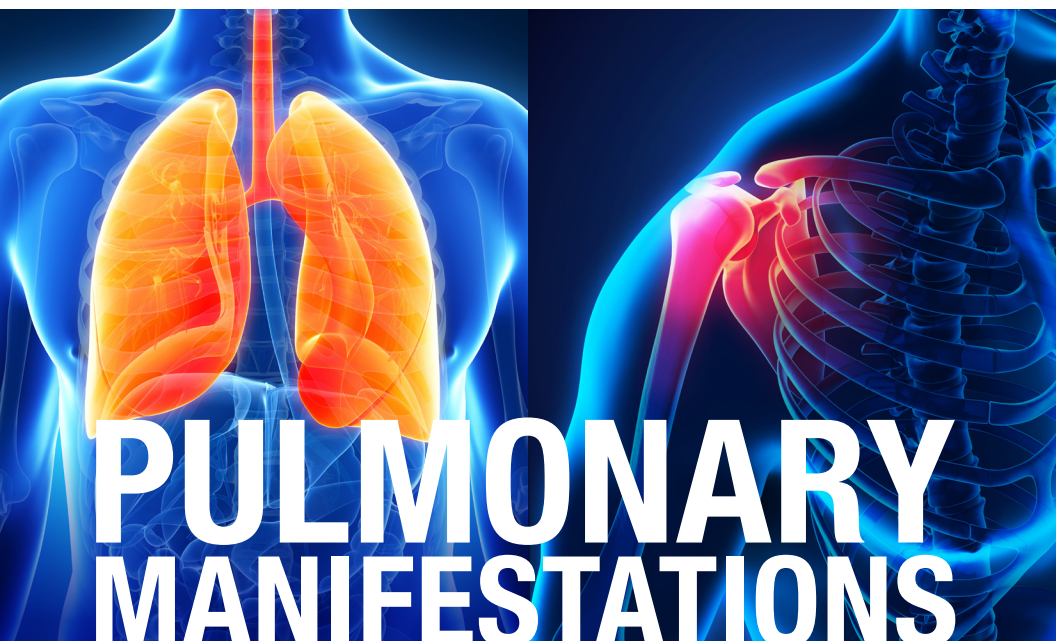




Mayo Clinic School of Continuous Professional Development



PULMONARY MANIFESTATIONS OF CONNECTIVE TISSUE DISORDERS

THE RITZ-CARLTON
AMELIA ISLAND, FLORIDA
OCTOBER 20–21, 2017

11.75
AMA PRA
CATEGORY 1
CREDITS™

COURSE DIRECTORS
ANDY ABRIL, M.D. / ISABEL MIRA-AVENDANO, M.D.

CE.MAYO.EDU/PULMONARYRHEUM2017

COURSE DESCRIPTION

This two-day course provides pulmonologists, rheumatologists, internists and general practitioners with an up-to-date focus on pulmonary manifestations of rheumatologic disorders. From this course, participants gain a better understanding of how to recognize and diagnose interstitial lung disease, pulmonary hypertension and other respiratory problems which are common in autoimmune rheumatologic disorders, and the latest information regarding pathogenic mechanisms, clinical trials and therapeutic modalities. The speakers will be nationally and internationally recognized specialists in the field. Residents and fellows will have the opportunity to participate by submitting original studies for poster presentations.

COURSE LEARNING OBJECTIVES

- Review basic clinical and therapeutic aspects of interstitial lung disease and pulmonary hypertension in patients with connective tissue diseases
- Improve interpretation skills for laboratory and pulmonary testing pertaining to patients with interstitial lung disease and connective tissue diseases
- Identify patients that need a multidisciplinary approach early in the course of the disease
- Review up-to-date information about ongoing research in connective tissue disease with patients with autoimmune lung involvement

INTENDED AUDIENCE

Pulmonologists, rheumatologists, primary care physicians, and any other providers or trainees with an interest in pulmonary involvement of connective tissue disorders.

LODGING ACCOMMODATIONS

The Ritz-Carlton, Amelia Island, FL

\$279 per night

Phone: 866-763-2960

Online Reservations: <https://aws.passkey.com/go/MayoClinicPulmonary2017>

Identify yourself as a participant of the

Mayo Clinic Pulmonary Manifestations course.

REGISTRATION

\$450 Physician/Scientists

\$325 Residents, Retirees, PAs and NPs

The registration fee includes tuition, online syllabus, continental breakfasts and break refreshments. **Early registration is advised.**

REGISTER ONLINE: [CE.MAYO.EDU/PULMONARYRHEUM2017](https://ce.mayo.edu/pulmonaryrheum2017)

SCHEDULE AT A GLANCE For a full program, visit: ce.mayo.edu/pulmonaryrheum2017

Friday, October 20, 2017
Approach to the Patient with Interstitial Lung Disease Associated with Connective Tissue Disorder
Interstitial Lung Disease in Rheumatoid Arthritis
Chest Radiology in Interstitial Lung Disease Related with Connective Tissue Disorder
Pathology in Interstitial Lung Disease Related with Connective Tissue Disorder
Interstitial Pneumonitis with Autoimmune Features
Interstitial Lung Disease in Scleroderma
Interstitial Lung Disease Related with Polymyositis and Antisynthetase Syndrome
Vasculitis and Lung Disease
Saturday, October 21, 2017
Approach to Pulmonary Hypertension in Connective Tissue Disease
Difference Between Idiopathic Pulmonary Fibrosis and Other Interstitial Lung Diseases
Pulmonary Manifestations of SLE and Sjogren's Syndrome
Practical Case Presentation

FACULTY

Mayo Faculty

Andy Abril, M.D.
Charles D. Burger, M.D.
Michael B. Gotway, M.D.
Andras Khoor, M.D., Ph.D.
Augustine S. Lee, M.D.
Eric L. Matteson, M.D.
Isabel Mira-Avendano, M.D.
Jay H. Ryu, M.D.

Guest Faculty

Paul F. Dellaripa, M.D.
Brigham and Women's Hospital
Aryeh Fischer, M.D.
University of Colorado
Joyce Lee, M.D.
University of Colorado

ABSTRACTS

An electronic poster session will be held. Any projects that pertain to the training and practice of rheumatology, pulmonology or a focus on pulmonary manifestations of rheumatologic disorders are welcome. E-posters will be chosen by **Thursday, August 31, 2017**. Submit your abstract or questions to flacmeabstracts@mayo.edu.

ACCREDITATION: Mayo Clinic College of Medicine and Science is accredited by the Accreditation Council for Continuing Medical Education to provide continuing medical education for physicians. Mayo Clinic College of Medicine and Science designates this live activity for a maximum of 11.75 *AMA PRA Category 1 Credits*[™]. Physicians should claim only the credit commensurate with the extent of their participation in the activity.

AOA – This program has been accredited by the American Osteopathic Association for 11.75 credits of AOA Category 2-A.

Other Health Care Professionals – A certificate of attendance will be provided to other health care professionals for requesting credits in accordance with state nursing boards, specialty societies, or other professional associations.

MAYO CLINIC

4500 San Pablo Road S
Jacksonville, FL 32224

NON-PROFIT ORG.
U.S. POSTAGE
PAID
MAYO CLINIC



PULMONARY MANIFESTATIONS OF CONNECTIVE TISSUE DISORDERS

THE RITZ-CARLTON
AMELIA ISLAND, FLORIDA
OCTOBER 20–21, 2017

COURSE DIRECTORS
ANDY ABRIL, M.D. / ISABEL MIRA-AVENDANO, M.D.

CE.MAYO.EDU/PULMONARYRHEUM2017

