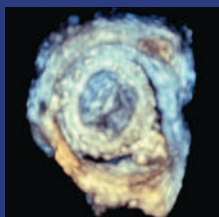
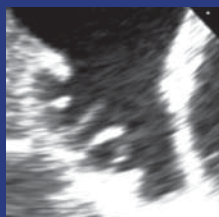
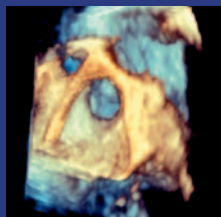




MAYO SCHOOL OF CONTINUOUS PROFESSIONAL DEVELOPMENT

MAYO CLINIC UPDATE IN ECHOCARDIOGRAPHY

>>Role of Echo from Prevention to Intervention



Course Directors

- >Hari P. Chaliki, M.D.
- >Tasneem Z. Naqvi, M.D.
- >Vuyisile T. Nkomo, M.D., M.P.H.

Thursday-Sunday
November 17-20, 2016

NEW LOCATION

OMNI SCOTTSDALE
RESORT & SPA
AT MONTELUZIA
SCOTTSDALE, ARIZONA

REGISTER NOW! \$75 DISCOUNT when you register at
ce.mayo.edu/node/15410 by **October 20, 2016**

General Information

COURSE DESCRIPTION/ HIGHLIGHTS

This four-day course addresses the role of echocardiography in preventive cardiology, valvular heart disease including percutaneous valve interventions, heart failure, LVAD and congenital heart disease. New topics such as how to perform carotid intima media thickness, 3D imaging, strain imaging, and hand-held echo imaging are unique aspects of this course.

This course features three 60-minute workshops:

- Three Dimensional TEE Imaging Cases: Learn with the Experts
- Strain Imaging and 3D TTE Imaging: Nuts and Bolts
- Hand-Held Echo

COURSE LEARNING OBJECTIVES

Upon completion of this activity, participants should be able to:

- Recognize the appropriate indications for non-invasive testing in patients at risk for Coronary Artery Disease (CAD).
- Recognize the indication for aortic and mitral valve intervention in patients with severe valve disease.
- Define the role of echocardiography in patients with cancer.
- Recognize common adult congenital cardiac conditions.
- Describe the indications for mitral clip for primary and secondary mitral regurgitation.
- Manipulate the three dimensional echocardiographic data set to demonstrate the pertinent cardiac abnormality responsible for patient's symptoms.
- Summarize the role of imaging in adult patients with complex congenital heart disease

INTENDED AUDIENCE

This course is intended for practicing adult cardiologists, cardiovascular surgeons, cardiovascular trainees, general internists, family medicine specialists, physician assistants, nurse practitioners, sonographers, and nurses with a cardiovascular interest.

GRANTS/EXHIBITS

This course is supported in part by educational grants, in accordance with ACCME standards.

As of this printing, a complete listing of commercial supporters was not available. Appropriate acknowledgment will be given to all supporters at the meeting. Exhibits will be available for viewing at all scheduled breaks.

CREDIT

Mayo Clinic College of Medicine is accredited by the Accreditation Council for Continuing Medical Education to provide continuing medical education for physicians.

Mayo Clinic College of Medicine designates this live activity for a maximum of 16.5 *AMA PRA Category 1 Credits™*. Physicians should claim only the credit commensurate with the extent of their participation in the activity.

Application for CME credit has been filed with the American Academy of Family Physicians. **Determination of credit is pending.**

This program has been accredited by the American Osteopathic Association for 16.5 credits of AOA Category 2-A.

Other Health Care Professionals

A certificate of attendance will be provided to other health care professionals for requesting credits in accordance with state nursing boards, specialty societies, or other professional associations.

MEETING LOCATION & ACCOMMODATIONS

Omni Scottsdale Resort & Spa at Montelucia
4949 East Lincoln Drive
Scottsdale, Arizona 85253
(480) 627-3200 or (888) 627-3010
www.montelucia.com

You are urged to make reservations early. A limited block of guest rooms have been reserved for attendees with a special course rate of \$209 single or double occupancy per night at the Omni Scottsdale Resort and Spa at Montelucia. Room rates include guest room wifi, resort fee waived, fitness center and complimentary self-parking. Group rates will be honored 3 days prior and 3 days following the course dates, based upon space availability. To make your reservation, go to the website below or call (480) 627-3200 or (888) 627-3010 and identify yourself as a participant of the Mayo Clinic Echocardiography Course. To receive the special rate, you must make reservations before the room block is filled. Reservations will be taken based upon resort room block availability at the contracted meeting rate.

Hotel Website for Reservations:

<https://www.omnihotels.com/hotels/scottsdale-montelucia/meetings/mayo-clinic-echocardiology-nov-2016>

Attendees are responsible for their own reservations. The standard hotel reservation cancellation policy will apply to individual reservations unless otherwise specified.

General Information

DISCLAIMER

Attendance at this Mayo course does not indicate nor guarantee competence or proficiency in the performance of any procedures which may be discussed or taught in this course.

AMERICAN WITH DISABILITIES ACT

Mayo Clinic College of Medicine fully intends to comply with the legal requirements of the Americans with Disabilities Act. If you need assistance, please notify us at least two weeks prior to the activity. Email address: mca.cme@mayo.edu

RECREATION/LEISURE ACTIVITIES

America's sixth-largest city still has real cowboys and rugged mountains and the kind of cactus most people see only in cartoons. Phoenix is the gateway to the Grand Canyon, and its history is a testament to the spirit of Puebloans, ranchers, miners and visionaries.

Projected against this rich backdrop is a panorama of urban sophistication: Resorts and spas that drop jaws and soothe souls. Stadiums and arenas worthy of the world's biggest sports spectacles. Restaurants with inspired cuisine and inspiring patio views. Golf courses that beckon players the year round. Shopping centers as stylish and eclectic as the fashions they house.

Don't forget Scottsdale located in the beautiful Sonoran Desert, bordered by Phoenix to the west and the McDowell Mountains on the east.

Scottsdale is annually rated among the nation's most desirable communities to live in, visit and do business in. Scottsdale's vibrant downtown is considered the finest urban center in Arizona. Scottsdale's McDowell Sonoran Preserve, in the city's northern reaches, is the largest urban wilderness area in the United States and features more than 60 miles of trails through diverse and scenic desert terrain.

Visit www.visitphoenix.com or www.experiencescottsdale.com for a variety of recreation and leisure activities in the area.

TRANSPORTATION

Hertz is offering a reduced daily rate for participants attending the course.

Visit Hertz online at www.hertz.com and refer to the exclusive CV Number **03NR0011** when making reservations. Special rates include unlimited mileage. Advance reservations are recommended as cars are subject to availability.

Supershuttle vans offer airport transportation to and from the hotel. To make reservations, call (800) 258-3826 or (602) 244-9000.

Faculty

COURSE DIRECTORS

Hari P. Chaliki, M.D.

Tasneem Z. Naqvi, M.D.

Vuyisile T. Nkomo, M.D., M.P.H.

MAYO CLINIC FACULTY

Christopher P. Appleton, M.D.

Reza Arsanjani, M.D.

Lori A. Blauwet, M.D.

Allison Cabalka, M.D.

Hari P. Chaliki, M.D.

Krishnaswamy Chandrasekaran, M.D.

Robert L. Click, M.D., Ph.D.

R. Todd Hurst, M.D.

Garvan C. Kane, M.D., Ph.D.

Steven J. Lester, M.D.

Grace Lin, M.D.

Sunil V. Mankad, M.D.

Tabitha G. Moe, M.D.

Tasneem Z. Naqvi, M.D.

Vuyisile T. Nkomo, M.D., M.P.H.

Patricia A. Pellikka, M.D.

Sorin Pislaru, M.D.

Kent H. Rehfeldt, M.D.

Samuel Unzek, M.D.

Hector R. Villarraga, M.D.

Susan Wilansky, M.D.

FACULTY DISCLOSURE: As a provider accredited by ACCME, Mayo Clinic College of Medicine (Mayo School of CPD) must ensure balance, independence, objectivity and scientific rigor in its educational activities. Course Director(s), Planning Committee Members, Faculty, and all others who are in a position to control the content of this educational activity are required to disclose all relevant financial relationships with any commercial interest related to the subject matter of the educational activity. Safeguards against commercial bias have been put in place. Faculty will also disclose any off-label and/or investigational use of pharmaceuticals or instruments discussed in their presentation. Disclosure of this information will be published in course materials so those participants in the activity may formulate their own judgments regarding the presentation.

NATIONAL PHYSICIAN PAYMENT TRANSPARENCY PROGRAM: Mayo Clinic College of Medicine complies with the requirements of the National Physician Payment Transparency Program OPEN PAYMENTS (Physician Payments Sunshine Act).

Program

Thursday, November 17, 2016

6:45 a.m. Registration & Continental Breakfast

7:20 Welcome Announcements

PERICARDIAL DISEASE/CARDIOMYOPATHY/HEART FAILURE

Moderator: Christopher P. Appleton, MD

- 7:30 Constrictive Pericarditis and its Mimics:
Illustrative Cases Christopher P. Appleton, M.D.
- 8:00 Cardiac Tamponade: Illustrative Cases Grace Lin, M.D.
- 8:30 Cases in Cardiomyopathy Roger L. Click, M.D., Ph.D.
- 9:00 Hypertrophic Cardiomyopathy –
Echo in Diagnosis and Management Steven J. Lester, M.D.
- 9:30 Echo in Cardiac Emergencies Samuel Unzek, M.D.
- 10:00 Panel Discussion Session Faculty
- 10:15 Break

VALVULAR HEART DISEASE

Moderator: Vuyisile T. Nkomo, M.D., M.P.H.

- 10:30 Primary or Secondary Severe Mitral
Regurgitation: Does it Matter?
When is Intervention Indicated? Vuyisile T. Nkomo, M.D., M.P.H.
- 11:00 Stress Testing in Valvular Heart Disease Patricia A. Pellikka, M.D.
- 11:30 Complications of Endocarditis:
Illustrative Cases Roger L. Click, M.D., Ph.D.
- Noon Simplified Echocardiographic Approach to
Diagnosing Abnormal Prosthetic Valves Susan Wilansky, M.D.
- 12:30 p.m. Panel Discussion Session Faculty
- 12:45 Break
- 1:00 Workshop: Hand-Held Echo Tasneem Z. Naqvi, M.D.
- 2:00 Adjourn

Friday, November 18, 2016

6:45 a.m. Continental Breakfast

7:20 Announcements

PREVENTIVE CARDIOLOGY / ADVANCED ECHO

Moderator: Tasneem Z. Naqvi, M.D.

- 7:30 Carotid and Femoral Plaque Assessment in
Cardiovascular Risk Stratification R. Todd Hurst, M.D.
- 8:00 Hand-Held Echo Tasneem Z. Naqvi, M.D.
- 8:30 Cases in Cardio Oncology Hector R. Villarraga, M.D.
- 9:00 Panel Discussion Session Faculty
- 9:15 Break
- 9:30 Pre and Intra-Procedural Echo Guidance of TAVR Hari P. Chaliki, M.D.
- 10:00 Mitral Clip:
Intra and Post Procedural Assessment Tasneem Z. Naqvi, M.D.
- 10:30 ECMO, LVAD, Artificial Heart and
Heart Transplant Kent H. Rehfeldt, M.D.
- 11:00 Challenging Clinical Cases in Prosthetic Valves Lori A. Blauwet, M.D.
- 11:30 Panel Discussion Session Faculty
- 11:45 Adjourn

Program

Saturday, November 19, 2016

- 6:45 a.m. Continental Breakfast
- 7:20 Announcements
- CONGENITAL HEART DISEASE**
- Moderator:** Allison Cabalka, M.D.
- 7:30 Simple Congenital Heart Disease:
Holes in the Heart and Other Things you will see
as an Adult Cardiologist Tabitha G. Moe, M.D.
- 8:00 Tetralogy of Fallot: What is it? How is it Repaired?
Will I Ever See It? Allison Cabalka, M.D.
- 8:30 Transposition of the Great Vessels. Corrected or Uncorrected –
What is the Difference? Krishnaswamy Chandrasekaran, M.D.
- 9:00 Getting Through Pregnancy with Congenital
Heart Disease and When to Avoid Pregnancy Allison Cabalka, M.D.
- 9:30 Panel Discussion..... Session Faculty
- 9:45 Break

SPECIAL TOPICS IN ECHOCARDIOGRAPHY

- Moderator:** Vuyisile T. Nkomo, M.D., M.P.H.
- 10:00 Echo Evaluation of the Aorta Vuyisile T. Nkomo, M.D., M.P.H.
- 10:30 Pulmonary Hypertension and Right Ventricle ... Garvan C. Kane, M.D., Ph.D.
- 11:00 Contrast Echocardiography: Dos and Don'ts Reza Arsanjani, M.D.
- 11:30 Strain Imaging Beyond Cardio Oncology Hector R. Villarraga, M.D.
- Noon Panel Discussion Session Faculty
- 12:15 p.m. Adjourn

Sunday, November 20, 2016

- 7:00 a.m. Continental Breakfast
- WORKSHOPS**
- 7:30 Three Dimensional TEE Imaging Cases:
Learn with the Experts..... Sunil V. Mankad, M.D.
- 8:30 Strain Imaging and 3D TTE Imaging:
Nuts and Bolts Hector R. Villarraga, M.D.
- 9:30 Adjourn

Program schedule is subject to change without notice.

Registration Information

Registration is available on our website at ce.mayo.edu (Keyword Search: "Role of Echo"). The registration fee includes continental breakfasts and refreshment breaks as noted in the program. Please refer to course program for included meals. An email confirmation will be sent upon receipt of payment and completed registration. If you do not receive your confirmation, or if you have any questions, please email us at mca.cme@mayo.edu or call (480) 301-4580. No refund will be granted unless a written notice of cancellation is received. If registration must be cancelled, tuition less a \$75 administrative fee will be refunded when notification is received on or before November 3, 2016. No refunds will be made after this date.

Although it is not Mayo Clinic's policy to limit the number of registrants for a course, conference room facilities may necessitate closure of enrollment. Early registration is strongly recommended. Walk-in registrations cannot be guaranteed. Mayo Clinic will not be responsible for expenses incurred by individuals who are not confirmed for courses with a closed registration status. Costs incurred by the registrant such as airline/hotel fees or penalties are the responsibility of the registrant.

ONLINE SYLLABUS: Your registration fee includes access to an electronic syllabus that will be emailed to you prior to the course. This allows you to view, save, or print the syllabus before attending the course. We suggest you download the syllabus to your laptop or tablet prior to the course to prevent any issues.

\$75 DISCOUNT WHEN YOU REGISTER AT: <https://ce.mayo.edu/cardiovascular-diseases/node/15410> (offer expires October 20, 2016)

	On or Before Oct. 20, 2016	Standard
Physicians Active in Practice	\$550	\$625
Resident, Retired and Allied Health	\$450	\$525

Note: Please refer to course agenda for included meals and refreshment breaks.