



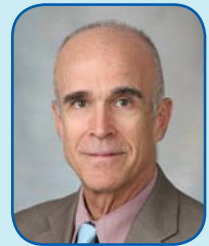
Mayo School of Continuous Professional Development

# 2016 Mayo Clinic Pathology Update

*A Tribute to the Career of Thomas V. Colby, M.D.*

**Thursday – Saturday  
February 4-6, 2016**

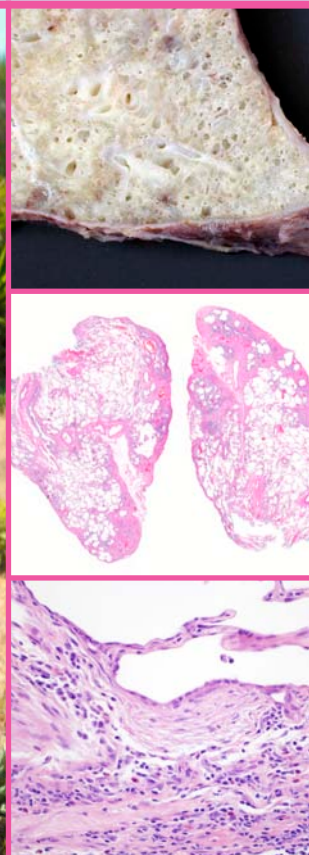
**Juanita Kious Waugh Auditorium  
Mayo Clinic Education Center  
Phoenix, Arizona**



Thomas V. Colby, M.D.



**Additional CME and  
self-assessment credits  
toward Part 2 Maintenance  
of Certification will be offered.**



**\$75 DISCOUNT WHEN YOU REGISTER AT:**

[www.ce.mayo.edu/node/5239](http://www.ce.mayo.edu/node/5239) (Offer Expires January 21, 2016)

Visit new website at [ce.mayo.edu](http://ce.mayo.edu) (Keyword Search: 2016 Pathology)

# General Information

## COURSE DESCRIPTION

This 2.5-day course provides attendees an update on a broad range of diagnostic pathology subjects, including pulmonary and mediastinal, soft tissue, gastro-intestinal, genitourinary, cytology, and hematopathology topics. Presentations will focus on practical diagnostic challenges with updates on current terminology, classification, and molecular markers. Following lecture sessions, attendees will have an opportunity to solidify new concepts and materials with case reviews and questions provided by the speakers.

Each lecture topic is carefully selected to celebrate the distinguished career of Professor Thomas V. Colby who has published many of the seminal articles related to these entities. The first day focuses on soft tissue lesions of the mediastinum and pleura, pancreatic neoplasms, and infectious mimics of inflammatory bowel disease. The second day is devoted to pulmonary pathology topics, both neoplastic and non-neoplastic. The final day covers thymus, genitourinary pathology, and extranodal Hodgkin lymphoma.

A special session will be held the second day during which Dr. Colby will share some of the index cases that inspired his groundbreaking work.

## COURSE LEARNING OBJECTIVES

Upon completion of this course, participants should be able to:

- Describe the genetic and pathologic characteristics of well-differentiated liposarcoma, dedifferentiated liposarcoma, myxoid liposarcoma, and pleomorphic liposarcoma, per current WHO classification
- Recognize the pathologic features of and diagnose renal and pulmonary ANCA-associated diseases
- Identify key features that distinguish inflammatory bowel disease from infectious mimics (e.g. lymphogranuloma venereum, syphilitic proctocolitis, basidiobolomycosis)
- Apply histological criteria for diagnosis of usual interstitial pneumonia (UIP) on surgical lung biopsies
- Describe morphologic features that separate benign from malignant mesothelial proliferations, and describe the utility of ancillary tests, such as p16 FISH and BAP1 immunohistochemistry.

- List the recent changes to the classification of lung carcinomas
- Appropriately utilize biomarkers required for newer lung cancer therapies
- Distinguish thymic epithelial tumors from some of its mimickers in the mediastinum
- List disorders that can mimic Classical Hodgkin Lymphoma, including those that may not require conventional cytotoxic chemotherapy, and describe findings that assist in their identification

## DISCLAIMER

Attendance at this Mayo course does not indicate nor guarantee competence or proficiency in the performance of any procedures which may be discussed or taught in this course.

## CREDIT

Mayo Clinic College of Medicine is accredited by the Accreditation Council for Continuing Medical Education to provide continuing medical education for physicians.

Mayo Clinic College of Medicine designates this live activity for a maximum of 18.75 *AMA PRA Category 1 Credits™*. Physicians should claim only the credit commensurate with the extent of their participation in the activity.

Additional CME and self-assessment credits toward Part 2 Maintenance of Certification will be offered at no extra charge as part of a post-course assessment.

## Other Health Care Professionals

A certificate of attendance will be provided to other health care professionals for requesting credits in accordance with state nursing boards, specialty societies, or other professional associations.

## GRANTS AND EXHIBITS

This course is supported in part by educational grants, in accordance with ACCME standards. As of this printing, a complete listing of commercial supporters was not available. Appropriate acknowledgment will be given to all supporters at the meeting. Exhibits will be available for viewing at all scheduled breaks.

## AMERICAN WITH DISABILITIES ACT

Mayo Clinic College of Medicine fully intends to comply with the legal requirements of the Americans with Disabilities Act. If you need assistance, please notify us at least two weeks prior to the activity. Email [mca.cme@mayo.edu](mailto:mca.cme@mayo.edu)

# General Information

## MEETING LOCATION

Juanita Kious Waugh Auditorium  
Mayo Clinic Education Center • 5777 East Mayo Boulevard • Phoenix, Arizona 85054  
[www.mayo.edu/education/about/about-mayo-clinic/mayo-clinic-in-Arizona/education-center](http://www.mayo.edu/education/about/about-mayo-clinic/mayo-clinic-in-Arizona/education-center)

## ACCOMMODATIONS

Residence Inn Phoenix Desert View at Mayo Clinic  
5655 East Mayo Boulevard • Phoenix, Arizona 85054  
(800) 331-3131 or (480) 563-1500 • [www.marriott.com/phxmh](http://www.marriott.com/phxmh)  
*Located on campus*

JW Marriott Phoenix Desert Ridge Resort & Spa  
5350 East Marriott Drive • Phoenix, Arizona 85054  
(800) 835-6206 or (480) 293-5000 • [www.marriott.com/phxdr](http://www.marriott.com/phxdr)  
*Located 1.9 miles from campus*

Hotel rooms near the Hospital are limited. You are urged to make reservations early. Attendees are responsible for their own reservations. The standard hotel reservation cancellation policy will apply to individual reservations unless otherwise specified.

## RECREATION/LEISURE ACTIVITIES

Visit [www.visitphoenix.com](http://www.visitphoenix.com) or [www.scottsdalecvb.com](http://www.scottsdalecvb.com) for recreation and leisure activities.

## TRANSPORTATION

Hertz is offering a reduced daily rate for participants attending the course. Visit Hertz online at [www.hertz.com](http://www.hertz.com) and refer to the exclusive CV Number #03NR0011 when making reservations. Special rates include unlimited mileage. Advance reservations are recommended as cars are subject to availability.

Supershuttle vans offer airport transportation to and from the hotel. To make reservations, call (800) 258-3826 or (602) 244-9000.

# Registration Information

Registration is available on our NEW website at [www.ce.mayo.edu](http://www.ce.mayo.edu) (Keyword Search: 2016 Pathology).

The registration fee includes continental breakfast, lunch, and refreshment breaks as noted in the program. Please refer to the course program for included meals.

An email confirmation will be sent upon receipt of payment and completed registration. If you do not receive your confirmation, or if you have any questions, please email us at [mca.cme@mayo.edu](mailto:mca.cme@mayo.edu) or call (480) 301-4580.

No refund will be granted unless a written notice of cancellation is received. If registration must be cancelled, tuition less a \$75 administrative fee will be refunded when notification is received on or before January 21, 2016. No refunds will be made after this date.

*Although it is not Mayo Clinic's policy to limit the number of registrants for a course, conference room facilities may necessitate closure of enrollment. Early registration is strongly recommended. Walk-in registrations cannot be guaranteed.*

*Mayo Clinic will not be responsible for expenses incurred by individuals who are not confirmed for courses with a closed registration status. Costs incurred by the registrant such as airline/hotel fees or penalties are the responsibility of the registrant.*

**ONLINE SYLLABUS:** Your registration fee includes access to an electronic syllabus that will be emailed to you prior to the course. This allows you to view, save, or print the syllabus before attending the course.

## \$75 DISCOUNT

When you register at [www.ce.mayo.edu/node/5239](http://www.ce.mayo.edu/node/5239) (Offer expires January 21, 2016)

*Note: When registering online, please be sure to "check-out" after your profile is updated.*

GENERAL SESSION	Standard (in USD)	Standard (in USD)
Physicians Active in Practice	\$700	\$775
Other (resident, retired, allied health)	\$600	\$675
<b>WELCOME RECEPTION</b> (Thursday, February 4, 2016)		
Attendee is included in registration fee – Additional tickets are available for \$50 each		

# Program

## Thursday, February 4, 2016

7:00 a.m.	<b>Registration and Continental Breakfast</b>
7:50	<b>Welcome Announcements</b>
8:00	<b>Malignant Endothelial Lesions That May Involve the Lungs and Pleura: An Update on Angiosarcoma and Epithelioid Hemangioendothelioma</b> Andrew L. Folpe, M.D.
9:00	<b>Lipomatous Neoplasms of the Thorax: Review of Pathogenetic Classification and Site-specific Peculiarities</b> Jennifer M. Boland, M.D.
10:00	<b>Break</b>
10:15	<b>Anti-neutrophil Cytoplasmic Antibody (ANCA) Associated Lung and Renal Disease</b> Maxwell L. Smith, M.D.
11:15	<b>Case Review: Malignant Endothelial Lesions</b> Andrew L. Folpe, M.D.
11:35	<b>Case Review: Lipomatous Neoplasms</b> Jennifer M. Boland, M.D.
11:55	<b>Lunch</b> ( <i>included</i> )
1:00 p.m.	<b>Endoscopic Ultrasound (EUS) Guided Fine Needle Aspirate (FNA) of Cystic Pancreatic Lesions</b> Longwen Chen, M.D., Ph.D. Matthew A. Zarka, M.D.
2:00	<b>Inflammatory Bowel Disease and Infectious Mimics</b> Christina A. Arnold, M.D. Dora M. Lam-Himlin, M.D.
3:00	<b>Break</b>
3:15	<b>Vascular Disorders of the Liver</b> Rish K. Pai, M.D., Ph.D.
4:15	<b>Case Review: Pancreatic Lesions</b> Longwen Chen, M.D., Ph.D. Matthew A. Zarka, M.D.
4:35	<b>Case Review: Inflammatory Bowel Disease and Infectious Mimics</b> Dora M. Lam-Himlin, M.D.
4:55	<b>Adjourn</b>
5:00	<b>Attendee Welcome Reception</b>

## Friday, February 5, 2016

7:15 a.m.	<b>Continental Breakfast</b>
7:50	<b>Announcements</b>
8:00	<b>Non-Neoplastic Lung Diseases Originally Described by Dr. Thomas Colby</b> Henry D. Tazelaar, MD
9:00	<b>Granulomas in Pulmonary Pathology</b> Kevin O. Leslie, M.D.
10:00	<b>Break</b>
10:15	<b>Diagnosis of Usual Interstitial Pneumonia / Idiopathic Pulmonary Fibrosis on Surgical Lung Biopsy and the Role of Multidisciplinary Review: Lessons from Dr. Thomas Colby</b> Jeffrey Myers, M.D.
11:15	<b>Case Review: Usual Interstitial Pneumonia / Idiopathic Pulmonary Fibrosis</b> Jeffrey Myers, M.D.

# Program

11:35	<b>Special Session:</b> <b>Index Cases from Tom Colby's Collection</b> ( <i>Show &amp; Tell Session</i> ) Thomas V. Colby, M.D.
12:20 p.m.	<b>Lunch</b>
1:15	<b>What's New in the New 2015 WHO Classification of Tumors of the Lung</b> Marie Christine Aubry, M.D.
2:15	<b>The Separation of Benign and Malignant Mesothelial Proliferations</b> Andrew Churg, M.D., Ph.D.
3:15	<b>Break</b>
3:30	<b>Biomarkers for Lung Cancers: Update 2016</b> Joanne E. Yi, M.D.
4:30	<b>Case Review:</b> <b>What's New in the New 2015 WHO Classification of Tumors of the Lung</b> Marie Christine Aubry, M.D.
4:50	<b>Case Review: Biomarkers for Lung Cancers: Update 2016</b> Joanne E. Yi, M.D.
5:10	<b>Adjourn</b>

## Saturday, February 6, 2016

7:15 a.m.	<b>Continental Breakfast</b>
7:50	<b>Announcements</b>
8:00	<b>Thymic Tumors – Evolution of Our Knowledge During the Era of Dr. Thomas Colby</b> Anja C. Roden, M.D.
9:00	<b>Neuroendocrine Tumors of the Urinary Tract</b> Tolgay Ocal, M.D. Melissa L. Stanton, M.D.
10:00	<b>Break</b>
10:15	<b>Extranodal Hodgkin Lymphoma and Mimics</b> Fiona E. Craig, M.D.
11:15	<b>Case Review: Neuroendocrine Tumors of the Urinary Tract</b> Tolgay Ocal, M.D. Melissa L. Stanton, M.D.
11:35	<b>Case Review: Hematopathology Cases</b> Katalin Kelemen, M.D., Ph.D. Ryan S. Robetorye, M.D., Ph.D.
11:55	<b>Adjourn</b>

*Program schedule is subject to change without notice.*



## COURSE DIRECTORS

Dora M. Lam-Himlin, M.D.

Melissa L. Stanton, M.D.

Henry D. Tazelaar, M.D.

## MAYO CLINIC FACULTY

Marie Christine Aubry, M.D.

Jennifer M. Boland, M.D.

Longwen Chen, M.D., Ph.D.

Thomas V. Colby, M.D.

Fiona E. Craig, M.D.

Andrew L. Folpe, M.D.

Katalin Kelemen, M.D., Ph.D.

Andras Khor, M.D., Ph.D.

Kevin O. Leslie, M.D.

Joseph J. Maleszewski, M.D.

Tolgay Ocal, M.D.

Rish K. Pai, M.D., Ph.D.

Ryan S. Robetorye, M.D., Ph.D.

Anja C. Roden, M.D.

Maxwell L. Smith, M.D.

Joanne E. Yi, M.D.

Matthew A. Zarka, M.D.

## GUEST FACULTY

Christina A. Arnold, M.D.

Andrew Churg, M.D., Ph.D.

Jeffrey Myers, M.D.

**FACULTY DISCLOSURE:** As a provider accredited by ACCME, Mayo Clinic College of Medicine (Mayo School of CPD) must ensure balance, independence, objectivity and scientific rigor in its educational activities. Course Director(s), Planning Committee Members, Faculty, and all others who are in a position to control the content of this educational activity are required to disclose all relevant financial relationships with any commercial interest related to the subject matter of the educational activity. Safeguards against commercial bias have been put in place. Faculty will also disclose any off-label and/or investigational use of pharmaceuticals or instruments discussed in their presentation. Disclosure of this information will be published in course materials so those participants in the activity may formulate their own judgments regarding the presentation.

## NATIONAL PHYSICIAN PAYMENT TRANSPARENCY PROGRAM

Mayo Clinic College of Medicine complies with the requirements of the National Physician Payment Transparency Program OPEN PAYMENTS (Physician Payments Sunshine Act).