



Mayo School of Continuous Professional Development

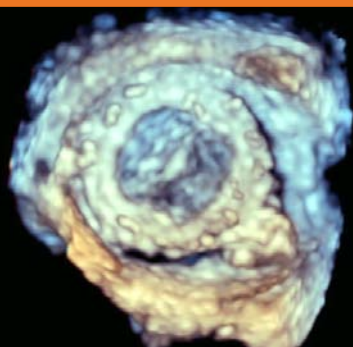
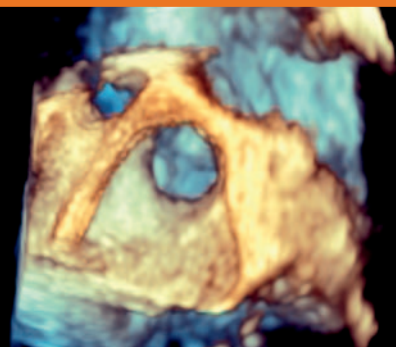
Mayo Clinic Update in Echocardiography: Role of Echo from Prevention to Intervention

**Thursday-Sunday
November 12-15, 2015**

**Hilton Scottsdale Resort & Villas
Scottsdale, Arizona**

Course Directors

Hari P. Chaliki, MD • Tasneem Z. Naqvi, MD • Vuyisile T. Nkomo, MD



\$75 DISCOUNT WHEN YOU REGISTER AT:

www.ce.mayo.edu/node/2712 *(Offer Expires October 12, 2015)*

Visit new website at ce.mayo.edu *(Keyword Search: Echo 2015)*

General Information

COURSE DESCRIPTION/ HIGHLIGHTS

This four-day course addresses the role of echocardiography in preventive cardiology, valvular heart disease including percutaneous valve interventions, heart failure, LVAD and congenital heart disease. New topics such as how to perform carotid intima media thickness, 3D imaging, strain imaging, and handheld echo imaging are unique aspects of this course.

This course features three 60-minute workshops:

- Three Dimensional TEE Imaging Cases: Learn With the Experts
- Strain Imaging and 3D TTE Imaging: Nuts and Bolts
- Carotid IMT: How to Do it? Live Case Demonstration Using Models

COURSE LEARNING OBJECTIVES

Upon completion of this activity, participants should be able to:

- Recognize the indication for aortic valve surgery in patients with low flow, low gradient severe aortic stenosis
- Discuss the role of echocardiography in patients with cancer.
- Identify the echocardiographic features which may contribute to aortic regurgitation in TAVR.
- Recognize common adult congenital cardiac conditions.
- Describe the indications for mitral clip for primary and secondary mitral regurgitation.
- Manipulate the three dimensional echocardiographic data set to demonstrate the pertinent cardiac abnormality responsible for patient's symptoms.
- Summarize the role of imaging in adult patients with complex congenital heart disease

INTENDED AUDIENCE

This course is intended for practicing adult cardiologists, cardiovascular surgeons, cardiovascular trainees, general internists, family medicine specialists, physician assistants, nurse practitioners, sonographers, and nurses with a cardiovascular interest.

GRANTS/EXHIBITS

This course is supported in part by educational grants, in accordance with ACCME standards.

As of this printing, a complete listing of commercial supporters was not available. Appropriate acknowledgment will be given to all supporters at the meeting. Exhibits will be available for viewing at all scheduled breaks.

DISCLAIMER

Attendance at this Mayo course does not indicate nor guarantee competence or proficiency in the performance of any procedures which may be discussed or taught in this course.

CREDIT

Mayo Clinic College of Medicine is accredited by the Accreditation Council for Continuing Medical Education to provide continuing medical education for physicians.

Mayo Clinic College of Medicine designates this live activity for a maximum of 18.0 *AMA PRA Category 1 Credits*TM. Physicians should claim only the credit commensurate with the extent of their participation in the activity.

Application for CME credit has been filed with the American Academy of Family Physicians. **Determination of credit is pending.**

This program has been accredited by the American Osteopathic Association for 18.0 credits of AOA Category 2-A.

Other Health Care Professionals

A certificate of attendance will be provided to other health care professionals for requesting credits in accordance with state nursing boards, specialty societies, or other professional associations.

MEETING LOCATION & ACCOMMODATIONS

Hilton Scottsdale Resort & Villas
6333 North Scottsdale Road
Scottsdale, Arizona 85250
(800) 498-7396 or (480) 948-7750
www.ScottsdaleResort.hilton.com

You are urged to make reservations early. A limited block of guest rooms have been reserved for attendees with a special course rate of \$149 single or double occupancy per night at the Hilton Scottsdale Resort & Villas. Group rates will be honored 3 days prior and 3 days following the course dates, based upon space availability. To make your reservation, go to the website below or call (480) 948-7750 and identify yourself as a participant of the Mayo Clinic Echocardiography Course. Complimentary Wi-Fi in guest room and self parking. Reservations will be taken based upon resort room block availability at the contracted meeting rate.

Hotel Website for Reservations:
www.hilton.com/en/hi/groups/personalized/S/SCTSHHF-MCE-20151111/index.jhtml?WT.mc_id=POG

Attendees are responsible for their own reservations. The standard hotel reservation cancellation policy will apply to individual reservations unless otherwise specified.

General Information

AMERICAN WITH DISABILITIES ACT

Mayo Clinic College of Medicine fully intends to comply with the legal requirements of the Americans with Disabilities Act. If you need assistance, please notify us at least two weeks prior to the activity.

Email address: mca.cme@mayo.edu

RECREATION/LEISURE ACTIVITIES

America's sixth-largest city still has real cowboys and rugged mountains and the kind of cactus most people see only in cartoons. Phoenix is the gateway to the Grand Canyon, and its history is a testament to the spirit of Puebloans, ranchers, miners and visionaries.

Projected against this rich backdrop is a panorama of urban sophistication: Resorts and spas that drop jaws and soothe souls. Stadiums and arenas worthy of the world's biggest sports spectacles. Restaurants with inspired cuisine and inspiring patio views. Golf courses that beckon players the year round. Shopping centers as stylish and eclectic as the fashions they house.

Don't forget Scottsdale located in the beautiful Sonoran Desert, bordered by Phoenix to the west and the McDowell Mountains on the east.

Scottsdale is annually rated among the nation's most desirable communities to live in, visit and do business in. Scottsdale's vibrant downtown is considered the finest urban center in Arizona. Scottsdale's McDowell Sonoran Preserve, in the city's northern reaches, is the largest urban wilderness area in the United States and features more than 60 miles of trails through diverse and scenic desert terrain.

Visit www.visitphoenix.com or www.experiencescottsdale.com for a variety of recreation and leisure activities in the area.

TRANSPORTATION

Hertz is offering a reduced daily rate for participants attending the course. Visit Hertz online at www.hertz.com and refer to the exclusive CV Number **03NR0010** when making reservations. Special rates include unlimited mileage. Advance reservations are recommended as cars are subject to availability.

Supershuttle vans offer airport transportation to and from the hotel. To make reservations, call **(800) 258-3826** or **(602) 244-9000**.

Faculty

COURSE DIRECTORS

Hari P. Chaliki, M.D.
Tasneem Z. Naqvi, M.D.

Vuyisile T. Nkomo, M.D.

MAYO CLINIC FACULTY

Naser M. Ammash, M.D.
Christopher P. Appleton, M.D.
Crystal R. Bonnicksen, M.D.
Krishnaswamy Chandrasekaran, M.D.
Roger L. Click, M.D., Ph.D.
William K. Freeman, M.D.
R. Todd Hurst, M.D.
Garvan Kane, MD, Ph.D.
Steven J. Lester, M.D.

Sunil V. Mankad, M.D.
Farouk Mookadam, MBBS
Patrick W. O'Leary, M.D.
Patricia A. Pellikka, M.D.
Ken Rehfeldt, M.D.
Samuel Unzek, M.D.
Hector Villarraga, M.D.
Susan Wilansky, M.D.

GUEST FACULTY

Aiden Abidov, M.D., Ph.D.
Sarver Health Center
Tucson, Arizona

FACULTY DISCLOSURE: As a provider accredited by ACCME, Mayo Clinic College of Medicine (Mayo School of CPD) must ensure balance, independence, objectivity and scientific rigor in its educational activities. Course Director(s), Planning Committee Members, Faculty, and all others who are in a position to control the content of this educational activity are required to disclose all relevant financial relationships with any commercial interest related to the subject matter of the educational activity. Safeguards against commercial bias have been put in place. Faculty will also disclose any off-label and/or investigational use of pharmaceuticals or instruments discussed in their presentation. Disclosure of this information will be published in course materials so those participants in the activity may formulate their own judgments regarding the presentation.

NATIONAL PHYSICIAN PAYMENT TRANSPARENCY PROGRAM: Mayo Clinic College of Medicine complies with the requirements of the National Physician Payment Transparency Program OPEN PAYMENTS (Physician Payments Sunshine Act).

Program

Thursday, November 12, 2015

6:45 a.m. Registration & Continental Breakfast

7:20 Welcome Announcements

PERICARDIAL DISEASE/CARDIOMYOPATHY/HEART FAILURE

Moderator: Tasneem Z. Naqvi, M.D.

7:30 Pericardial Disease Christopher P. Appleton, M.D.
8:00 Unusual Cardiomyopathies Roger L. Click, M.D., Ph.D.
8:30 Complications of Myocardial Infarction Samuel Unzek, M.D.
9:00 Stress Echo in Cardiomyopathies Patricia A. Pellikka, M.D.
9:30 Echo and Dyssynchrony in Heart Failure Tasneem Z. Naqvi, M.D.
10:00 Panel Discussion Session Faculty
10:15 Break

VALVULAR HEART DISEASE

Moderator: Hari P. Chaliki, M.D.

10:30 Paradoxical Low Gradient Severe Aortic Stenosis Hari P. Chaliki, M.D.
11:00 Diagnosis and Management of
Tricuspid Regurgitation Vuyisile T. Nkomo, M.D., MPH
11:30 Endocarditis: What is New in 2015? William D. Freeman, M.D.
Noon Diagnosis of Mechanical Prosthetic Valve
Dysfunction by Echocardiography Susan Wilansky, M.D.
12:30 p.m. Panel Discussion Session Faculty
12:45 Adjourn

Friday, November 13, 2015

6:45 a.m. Continental Breakfast

7:20 Announcements

PREVENTIVE CARDIOLOGY

Moderator: R. Todd Hurst, M.D.

7:30 CIMT or CT for Cardiac Risk Stratification? R. Todd Hurst, M.D.
8:00 Hand Held Echo Tasneem Z. Naqvi, M.D.
8:30 Echo in Assessment of Cardio-Toxicity Farouk Mookadam, M.B., B.Ch.
9:00 Echo in Pulmonary Hypertension Garvan C. Kane, M.D., Ph.D.
9:30 Panel Discussion Session Faculty
9:45 Break

ADVANCED ECHOCARDIOGRAPHY

Moderator: Vuyisile T. Nkomo, M.D., MPH

10:00 Mitral Clip: Pre and Post Procedural Assessment .. Tasneem Z. Naqvi, M.D.
10:30 Pre and Intra-Procedural Echo Guidance of TAVR Hari P. Chaliki, M.D.
11:00 Challenging Clinical Cases in
Valvular Heart Disease Vuyisile T. Nkomo, M.D., MPH
11:30 Intraoperative Echo: Interesting Cases
from the Archives of Mayo Clinic Kent H. Rehfeldt, M.D.
Noon Echo in Cardiac Mechanical
Devices Krishnaswamy Chandrasekaran, M.D.
12:30 p.m. Panel Discussion Session Faculty
12:45 Adjourn

Saturday, November 14, 2015

6:45 a.m. Continental Breakfast

7:20 Announcements

CONGENITAL HEART DISEASE

Moderator: Patrick W. O'Leary, M.D.

7:30 Segmental Approach to Congenital ECHO Patrick W. O'Leary, M.D.
8:00 Simple Adult Congenital Heart Disease:
Case Based Approach Crystal R. Bonnicksen, M.D.

Program

8:30	Enlarged RV: When and How to Look for a Shunt by Echo	Naser M. Ammash, M.D.
9:00	Challenging Cases of Adult Congenital Heart Disease	Crystal R. Bonnicksen, M.D.
9:30	Panel Discussion Session Faculty	
9:45	Break	

SPECIAL TOPICS IN ECHOCARDIOGRAPHY

Moderator: Sunil V. Mankad, M.D.

10:00	3D Imaging-Incremental Value or Added Hassle?	Sunil V. Mankad, M.D.
10:30	Modern Imaging in Diagnosis and Management of ARVC/D	Aiden Abidov M.D., Ph.D.
11:00	Hypertrophic Cardiomyopathy	Steven J. Lester, M.D.
11:30	LV and RV Strain Imaging	Hector R. Villarraga, M.D.
Noon	Contrast Echocardiography: Dos and Don'ts	Steven J. Lester, M.D.
12:30 p.m.	Panel Discussion	Session Faculty
12:45	Adjourn	

Sunday, November 15, 2015

7:00 a.m.	Continental Breakfast	
	WORKSHOPS	
	<ul style="list-style-type: none">• 60 minutes per session• Audience will be split up into 3 groups• Each group will rotate every 60 minutes	
7:30	Three Dimensional TEE Imaging Cases: Learn With the Experts	Sunil V. Mankad, M.D.
8:30	Two Dimensional LV and RV Strain Imaging: Nuts and Bolts.	Hector R. Villarraga, M.D.
9:30	Carotid IMT: How to Do It? Live Case Demonstration Using Models.	Tasneem Z. Naqvi, M.D.
10:30	Adjourn	

Program schedule is subject to change without notice.

Registration Information

Registration is available on our NEW website at www.ce.mayo.edu (Keyword Search: "Role of Echo"). The registration fee includes continental breakfasts and refreshment breaks as noted in the program. Please refer to course program for included meals.

An email confirmation will be sent upon receipt of payment and completed registration. If you do not receive your confirmation, or if you have any questions, please email us at mca.cme@mayo.edu or call **(480) 301-4580**.

No refund will be granted unless a written notice of cancellation is received. If registration must be cancelled, tuition less a \$75 administrative fee will be refunded when notification is received on or before October 29, 2015. No refunds will be made after this date.

Although it is not Mayo Clinic's policy to limit the number of registrants for a course, conference room facilities may necessitate closure of enrollment. Early registration is strongly recommended. Walk-in registrations cannot be guaranteed. Mayo Clinic will not be responsible for expenses incurred by individuals who are not confirmed for courses with a closed registration status. Costs incurred by the registrant such as airline/ hotel fees or penalties are the responsibility of the registrant.

ONLINE SYLLABUS: Your registration fee includes access to an electronic syllabus that will be emailed to you prior to the course. This allows you to view, save, or print the syllabus before attending the course. We suggest you download the syllabus to your laptop or tablet prior to the course to prevent any issues.

\$75 DISCOUNT WHEN YOU REGISTER AT: www.ce.mayo.edu/node/2712 (offer expires October 15, 2015) <i>Note: When registering online, please be sure to "check-out" after your profile is updated.</i>		
	On or Before Oct. 15, 2015	Standard
Physicians Active in Practice	\$550	\$625
Resident, Retired and Allied Health	\$450	\$525
<i>Note: Please refer to course agenda for included meals and refreshment breaks.</i>		