

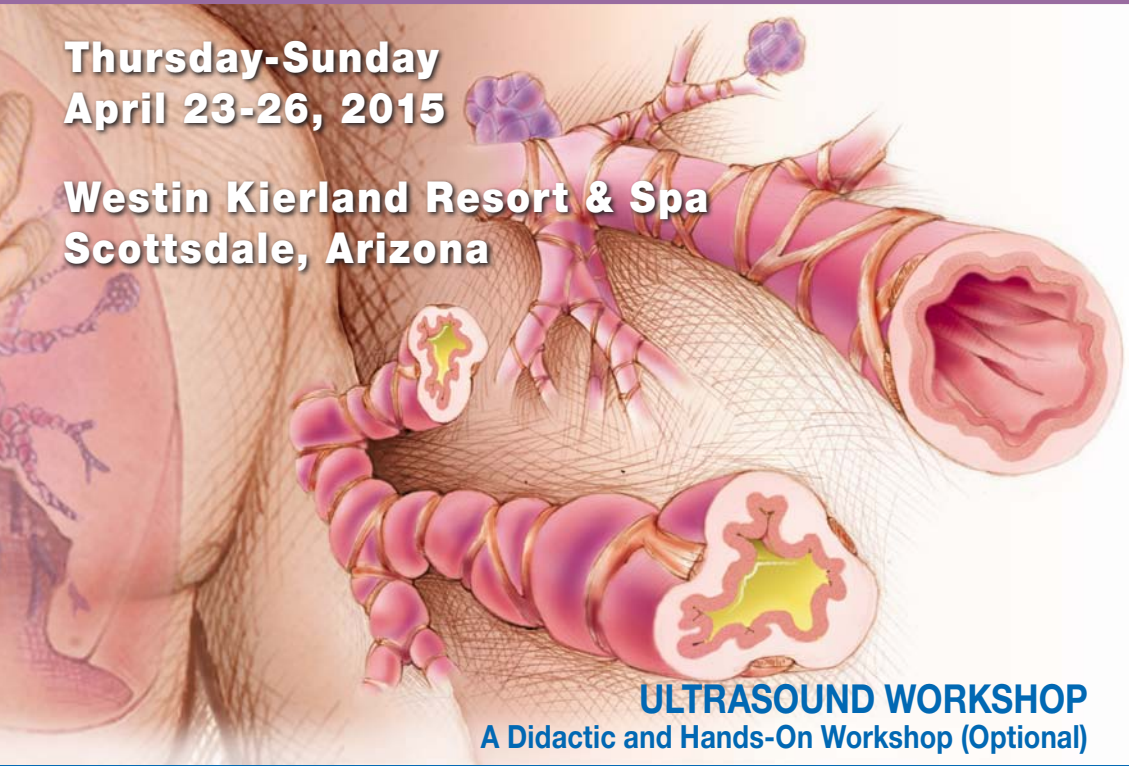


Mayo School of Continuous Professional Development

2015 Multidisciplinary Update in Pulmonary and Critical Care Medicine

Thursday-Sunday
April 23-26, 2015

Westin Kierland Resort & Spa
Scottsdale, Arizona

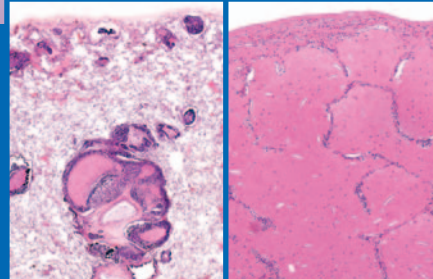
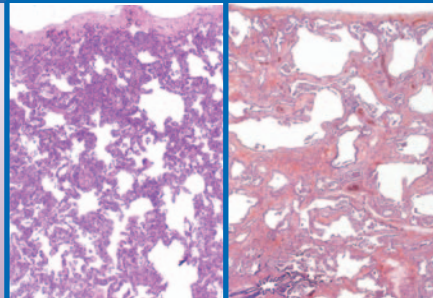


ULTRASOUND WORKSHOP

A Didactic and Hands-On Workshop (Optional)

Course Highlights:

- Review of Current Pulmonary and Critical Care Literature
- Q&A Sessions
- Case Studies
- Interactive, Case-Based Presentations



REGISTER NOW!

\$75 DISCOUNT FOR ONLINE REGISTRATION!

Visit new website at ce.mayo.edu

(Keyword Search: Pulmonary 2015)

(Offer expires March 27, 2015)

General Information

COURSE DESCRIPTION/ HIGHLIGHTS

The *2015 Multidisciplinary Update in Pulmonary and Critical Care Medicine* offers lectures, case presentations, pulmonary and critical care literature reviews.

A multidisciplinary faculty from Mayo Clinic in Jacksonville, FL, Rochester, MN, and Scottsdale, AZ offers a state-of-the-art update in pulmonary and critical care medicine. The presentations given by leaders in pulmonary and critical care medicine, pulmonary pathology, and radiology provide a comprehensive approach to the current evaluation and management of various respiratory diseases.

OPTIONAL SESSION

Hands-on workshop –

Use of the Ultrasound in the ICU is scheduled for Friday, April 24 and Saturday, April 25 from 1:15 to 4:30 p.m. This workshop will provide participants with a better understanding of how to use state-of-the-art technology, offering didactic and hands-on skill building opportunities. *Separate registration fee applies.*

INTENDED AUDIENCE

One of the strengths of the Pulmonary and Critical Care Update course is representation in diverse learner medical disciplines: Pulmonology, Critical Care, Internal Medicine, Hospital Medicine, Thoracic Surgeons, Oncology, Radiation Oncology, Sleep Medicine, NPs and PAs. Other Specialties that are represented include: Allergy and Immunology, Anesthesiology, Cardiovascular Disease, Emergency Medicine, Family Medicine, Infectious Diseases, Vascular Surgery, Pediatrics, and Occupational Medicine.

GRANTS

This course is supported in part by educational grants, in accordance with ACCME standards.

As of this printing, a complete listing of commercial supporters was not available. Appropriate acknowledgment will be given to all supporters at the meeting.

EXHIBITS

Exhibits will be available for viewing at all scheduled breaks.

COURSE LEARNING OBJECTIVES

Upon completion of this course, participants should be able to:

- Summarize new developments in ARDS
- Review the current management of acute severe hypoxic respiratory failure
- Summarize the new developments in Sepsis management
- Review the current evaluation and management of patients with pulmonary hypertension
- Describe the current and newer treatments of patients with pulmonary hypertension
- Review the current role of noninvasive mechanical ventilation in the Intensive Care Unit
- Describe the current evaluation and treatment of patients with Organizing Pneumonia
- Summarize the approach to the evaluation of patients with Idiopathic interstitial pneumonias
- Review the radiologic finding of the Idiopathic interstitial pneumonias
- Summarize the pathology of the Idiopathic interstitial pneumonias
- Summarize the current evaluation treatment of idiopathic pulmonary fibrosis
- Review the evaluation and treatment of patients with scleroderma
- Review the evaluation and treatment of patients with Rheumatoid Arthritis and the Inflammatory Myopathies
- Discuss the interstitial pneumonias associated with the connective tissue diseases
- Describe the current evaluation and treatment of patients with pulmonary eosinophilia
- Summarize the current state of lung transplantation

DISCLAIMER

Attendance at this Mayo course does not indicate nor guarantee competence or proficiency in the performance of any procedures which may be discussed or taught in this course.

AMERICAN WITH DISABILITIES ACT

Mayo Clinic College of Medicine fully intends to comply with the legal requirements of the Americans with Disabilities Act. If you need assistance, please notify us at least two weeks prior to the activity.

Email address: mca.cme@mayo.edu

General Information

CREDIT

Mayo Clinic College of Medicine is accredited by the Accreditation Council for Continuing Medical Education to provide continuing medical education for physicians.

Mayo Clinic College of Medicine designates this live activity for a maximum of 18.25 *AMA PRA Category 1 Credits™* for the General Session and 8.0 *AMA PRA Category 1 Credits™* for the Ultrasound Workshop. Physicians should claim only the credit commensurate with the extent of their participation in the activity.

AAFP: Application for CME credit has been filed with the American Academy of Family Physicians. **Determination of credit is pending.**

AOA: This program has been accredited by the American Osteopathic Association for 18.25 credits of AOA Category 2-A for General Session and 8.0 credits for Ultrasound Workshop.

Other Health Care Professionals: A certificate of attendance will be provided to other health care professionals for requesting credits in accordance with state nursing boards, specialty societies, or other professional associations.

MEETING LOCATION & ACCOMMODATIONS

**Westin Kierland Resort & Spa • 6902 E. Greenway Parkway • Scottsdale, Arizona 85254
480-624-1000 or 1-800-354-5892 • Hotel Website: www.kierlandresort.com**

You are urged to make reservations early. A limited block of guest rooms has been reserved for attendees with a special course rate of \$269 single or double occupancy per night. Group rates will be honored 3 days prior and 3 days following the course dates, based upon space availability. To make your reservation, go to <https://www.starwoodmeeting.com/Book/Pulm2015> or call (800) 354-5892.

To receive the special rate, you must make reservations before the room block is filled by the expiration date of March 23, 2015. Reservations will be taken following this date based upon resort room availability, at the contracted meeting rate. Attendees are responsible for their own reservations. The standard hotel reservation cancellation policy will apply to individual reservations unless otherwise specified.

RECREATION/LEISURE ACTIVITIES

Visit www.visitphoenix.com or www.scottsdalecvb.com for recreation and leisure activities

TRANSPORTATION

Ground Transportation: Hertz is offering a reduced daily rate for participants attending the course. Call (800) 654-2240 and refer to CV Number #03NR0010 when making reservations.

Supershuttle vans offer airport transportation to and from the hotel. To make reservations, call (800) 258-3826 or (602) 244-9000.

Faculty

MAYO CLINIC FACULTY

Andy Abril, M.D.
Timothy R. Aksamit, M.D.
Anjali Bhagra, MBBS
Charles D. Burger, M.D.*
Sean M. Caples, D.O.
Craig E. Daniels, M.D.
Michelle L. Freeman, M.D.
Michael B. Gotway, M.D.
W. Leroy Griffing, M.D.
Steven R. Holets, RRT
Vivek N. Iyer, M.D.
Margaret M. Johnson, M.D.

Kianoush B. Kashani, M.D.
Augustine S. Lee, M.D.
Bernie W. Miller, RPSGT, RCP
John J. Mullon, M.D.
Teng Moua, M.D.
Darlene R. Nelson, M.D.
Richard A. Oeckler, M.D., Ph.D.
Eric J. Olson, M.D.
Prasad M. Panse, M.D.
Steve G. Peters, M.D.
Matthew A. Rank, M.D.
Matthew J. Ritter, M.D.

Jay H. Ryu, M.D.
Robert E. Safford, M.D., Ph.D.
Hiroshi Sekiguchi, M.D.
Ayen Sen, M.D.
Ramachandra R. Sista, M.D.
Ulrich Specks, M.D.*
Maxwell L. Smith, M.D.
Karen L. Swanson, D.O.
Laszlo T. Vaszar, M.D.
Robert W. Viggiano, M.D.*

* Course Directors

FACULTY DISCLOSURE: As a provider accredited by ACCME, Mayo Clinic College of Medicine (Mayo School of CPD) must ensure balance, independence, objectivity and scientific rigor in its educational activities. Course Director(s), Planning Committee Members, Faculty, and all others who are in a position to control the content of this educational activity are required to disclose all relevant financial relationships with any commercial interest related to the subject matter of the educational activity. Safeguards against commercial bias have been put in place. Faculty will also disclose any off-label and/or investigational use of pharmaceuticals or instruments discussed in their presentation. Disclosure of this information will be published in course materials so those participants in the activity may formulate their own judgments regarding the presentation.

NATIONAL PHYSICIAN PAYMENT TRANSPARENCY PROGRAM

Mayo Clinic College of Medicine complies with the requirements of the National Physician Payment Transparency Program OPEN PAYMENTS (Physician Payments Sunshine Act).

Program

Thursday, April 23, 2015

7:00 a.m.	Registration and Continental Breakfast	
7:40	ARDS, Where are we in 2015?	Richard A. Oeckler, M.D., Ph.D.
8:20	Sepsis Update: EGDT Trails Data and Practice Implications	Craig E. Daniels, M.D.
9:00	Advances in Ventilatory Support	Steven R. Holets, RRT
9:40	Break	
10:00	ECMO/ECCO2R in Severe Acute Respiratory Failure	Ayen Sen, M.D.
10:40	Pulmonary Complications of Stem Cell Transplantation	Steve G. Peters, M.D.
11:20	Sedation and Early Mobilization in the ICU	Vivek N. Iyer, M.D.
Noon	Critical Care Literature Review	Margaret M. Johnson, M.D.
12:45 p.m.	Adjourn	

Friday, April 24, 2015

7:00 a.m.	Continental Breakfast	
7:30	Welcome Announcements	
7:40	Clinical Approach to the Patient with Interstitial Lung Disease	Augustine S. Lee, M.D.
8:20	Radiology of Interstitial Lung Disease	Michael B. Gotway, M.D.
9:00	Pathology of Interstitial Lung Diseases	Maxwell L. Smith, M.D.
9:40	Break	
10:00	Update in Idiopathic Pulmonary Fibrosis	Jay H. Ryu, M.D.
10:40	Evaluation and Treatment of Scleroderma	Leroy Griffing, M.D.
11:20	Evaluation and Treatment of Rheumatoid Arthritis and the Inflammatory Myopathies	Andy Abril, M.D.
Noon	The Interstitial Lung Diseases Associated with Connective Tissue Diseases	Teng Moua, M.D.
12:45 p.m.	Adjourn	
1:30	Ultrasound Workshop (<i>Optional Session</i>)	

Saturday, April 25, 2015

7:00 a.m.	Continental Breakfast	
7:30	Welcome Announcements	
7:40	Evaluation and Diagnosis of Pulmonary Hypertension	Robert E. Safford, M.D.
8:20	Update in the Treatment of Pulmonary Hypertension	Karen L. Swanson, D.O.
9:00	Controversies in the Management of Pulmonary Emboli	Sean M. Caples, M.D.
9:40	Break	
10:00	Update in Bronchiectasis	Timothy R. Aksamit, M.D.
10:40	Obstructive Sleep Apnea and the Commercial Vehicle Driver	Eric J. Olson, M.D.
11:20	Update in Sleep Technology	Bernie W. Miller, RPSGT, RCP
Noon	Pulmonary Literature Review	Darlene R. Nelson, M.D.
12:45 p.m.	Adjourn	
1:30	Ultrasound Workshop (<i>Optional Session</i>)	

Sunday, April 26, 2015

7:00 a.m.	Continental Breakfast	
7:30	Welcome Announcements	
7:40	Pulmonary Eosinophilia	Matthew A. Rank, M.D.
8:20	Organizing Pneumonia	Laszlo T. Vaszar, M.D.
9:00	Update in Lung Transplantation	Ramachandra R. Sista, M.D.
9:40	Break	
10:00	Interesting Cases	Robert W. Viggiano, M.D.
10:40	Interesting Cases	Prasad M. Panse, M.D.
11:20	Interesting Cases	Maxwell L. Smith, M.D.
Noon	Adjourn	

Optional Session

Advanced Point-of-Care Ultrasonography Workshop

Friday, April 24 and Saturday, April 25, 2015, 1:30 - 5:00 p.m.

(Registration fee: \$300 per person; limited space available)

Plan now to attend this optional hands-on, skill-building workshop. Didactic presentations plus practice skills using high-quality ultrasound technology on live models, supervised by experienced faculty to guide and maximize your training. Attendees will gain understanding on the use of the ultrasound in order to improve patient care.

LEARNING OBJECTIVES

Upon completion of this course, participants should be able to:

- Explain knobology of the portable ultrasound and demonstrate its advanced clinical application in vascular, thoracic, abdominal, and cardiac ultrasound
- Demonstrate quantitative and qualitative hemodynamic measurements in cardiac ultrasound
- Interpret normal and abnormal point-of-care ultrasonography images

Friday, April 24, 2015

1:30 p.m.	Physics: Doppler Overview
1:50	Advanced Vascular Ultrasonography
2:10	Advanced Thoracic Ultrasonography
2:40	Advanced Cardiac Ultrasonography Part 1
3:10	Advanced Cardiac Ultrasonography Part 2
3:30	Break
3:40	Skills Workshop Drs. Bhagra, Freeman, Iyer, Kashani, Mullon, Ritter, Sekiguchi
5:00	Adjourn

Saturday, April 25, 2015

1:30 p.m.	Advanced Abdominal Ultrasonography
1:50	Procedural and Diagnostic Ultrasonography
2:10	Advanced Cardiac Ultrasonography Part 3
2:40	Advanced Cardiac Ultrasonography Part 4
3:10	Image Interpretation
3:30	Break
3:40	Skills Workshop Drs. Bhagra, Freeman, Iyer, Kashani, Mullon, Ritter, Sekiguchi
5:00	Adjourn

Registration Information

Registration is available on-line at our NEW website at ce.mayo.edu (Keyword Search: Pulmonary 2015). The registration fee includes tuition, continental breakfasts, and break refreshments.

\$75 DISCOUNT FOR ONLINE REGISTRATION!

Go to ce.mayo.edu – Keyword Search: Pulmonary 2015 (offer expires March 27 2015)

Note: When registering online, please be sure to “check-out” after your profile is updated.

	Online Fee	Standard Fee
Physicians Active in Practice	\$585	\$660
Allied Health, Residents and Retired	\$485	\$560
Paper copy of the syllabus <i>Due to printing deadlines, this option will not be available after April 10, 2015.</i>	\$40	
Ultrasound Workshop	\$300	

Although it is not Mayo School of Continuous Professional Development (CPD) policy to limit the number of registrants for a course, conference room facilities may necessitate closing of enrollment; therefore, early registration is advised.

A letter of confirmation will be sent upon receipt of payment and completed registration form. If you do not receive your confirmation, or if you have any questions, please email us at mca.cme@mayo.edu or call (480) 301-4580. Please present the confirmation letter when checking in at the meeting registration desk.

CANCELLATION POLICY: If you cancel your participation in this course, your registration fee, less a \$75 administrative fee, will be refunded when written notification is received by the Mayo School of CPD before April 17, 2015. Please e-mail your request to cancel to mca.cme@mayo.edu. No refunds will be made on or after April 23, 2015. Canceled registrations are non-transferable. Mayo School of Continuous Professional Development (MSCPD) reserves the right to cancel or postpone any course due to unforeseen circumstances. In the unlikely event MSCPD must cancel or postpone this course, MSCPD will refund the registration fee, but is not responsible for any related costs, charges, or expenses to participants, including fees assessed by airline/travel/lodging agencies.

ONLINE SYLLABUS: Your registration fee includes access to an electronic syllabus that will be emailed prior to the course. This allows you to view, save, or print the syllabus before attending the course.

Mayo Clinic will not be responsible for expenses incurred by individuals who are not confirmed for courses with a closed registration status. Costs incurred by the registrant such as airline/ hotel fees or penalties are the responsibility of the registrant.

Mayo Clinic
13400 East Shea Boulevard
Scottsdale, Arizona 85259

NON-PROFIT ORG.
U.S. POSTAGE
PAID
MAYO CLINIC

\$75 DISCOUNT FOR ONLINE REGISTRATION!
ce.mayo.edu — Keyword: Pulmonary 2015 (offer expires March 27, 2015)

Email: mca.cme@mayo.edu • Phone: (480) 301-4580 • Fax: (480) 301-9176

2015 Multidisciplinary Update in Pulmonary and Critical Care Medicine

Westin Kierland Resort & Spa
Scottsdale, Arizona
Thursday – Sunday
April 23-26, 2015

SAVE THE DATE

2016 Multidisciplinary Update in
Pulmonary and Critical Care Medicine
Thursday – Sunday, April 7-10, 2016

NEW LOCATION

The Omni Scottsdale Resort & Spa at Montelucia
4949 East Lincoln Drive • Paradise Valley, Arizona
Phone: (888) 627-3010
www.omnihotels.com/hotels/scottsdale-montelucia

See all opportunities at ce.mayo.edu

©2015 Mayo Foundation for Medical Education and Research.
Printed in the USA

Mayo School of Continuous Professional Development uses multiple mailing lists and cannot always eliminate duplications. If you have received multiple brochures, please post or share them with interested colleagues.

