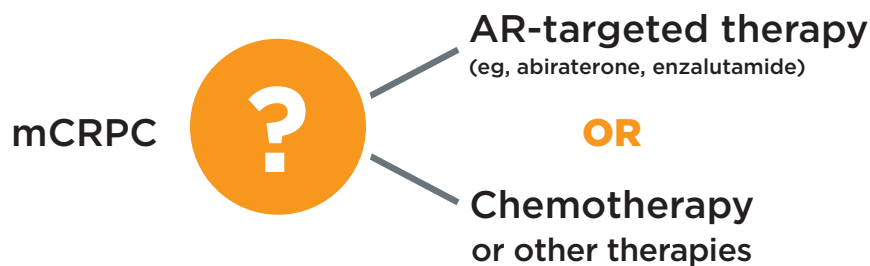


# In mCRPC, knowing when it's time to shift away from AR-targeted therapy can be a challenge

## **CHALLENGE:** Not all patients with mCRPC will respond to androgen receptor (AR)-targeted therapy<sup>1</sup>

- Prior to being diagnosed with mCRPC, patients may have already been treated with an AR-targeted therapy like apalutamide
- While most patients with mCRPC will initially respond to abiraterone or enzalutamide, many patients eventually progress on therapy and other options will need to be considered<sup>1</sup>

## **CHALLENGE:** There are no tools broadly available that use nuclear detection to precisely identify which patients with mCRPC will be resistant to AR-targeted therapy<sup>2</sup>



## **When AR-targeted therapy fails, acquired resistance could be the cause<sup>1</sup>**

- AR-V7 is a strong predictive biomarker of resistance to AR-targeted therapies<sup>3-5</sup> like abiraterone, enzalutamide, or apalutamide
- Based on multiple studies, nuclear localization is important to avoid the potential for false positives<sup>3,6</sup>

Only the nuclear-localized technology of Oncotype DX AR-V7 Nucleus Detect<sup>®</sup> test identifies the critical AR-V7 protein within the nucleus

**References:** 1. Antonarakis et al. *N Engl J Med*. 2014. 2. Scher et al. *Eur Urol*. 2016. 3. Scher et al. *JAMA Oncol*. 2016. 4. Antonarakis et al. *Expert Rev Anticancer Ther*. 2015. 5. Maughan et al. *Curr Treat Options Oncol*. 2015. 6. Scher et al. *JAMA Oncol*. 2018.

oncotypeDX<sup>®</sup>  
AR-V7 Nucleus Detect  
powered by Epic Sciences



PREDICT WHAT'S AHEAD WITH THE  
ONCOTYPE DX AR-V7 NUCLEUS DETECT® TEST

oncotypeDX®

## Quickly direct your patients with mCRPC toward the right course of treatment

Shifting patients who are AR-V7+ away from AR-targeted therapies can improve outcomes

- Patients who are nuclear AR-V7+ do not respond to AR-targeted therapies, but can still benefit from taxane chemotherapy<sup>3</sup>
- Patients who are nuclear AR-V7- are likely to live longer on an AR-targeted therapy<sup>6</sup>

Nuclear AR-V7

Positive

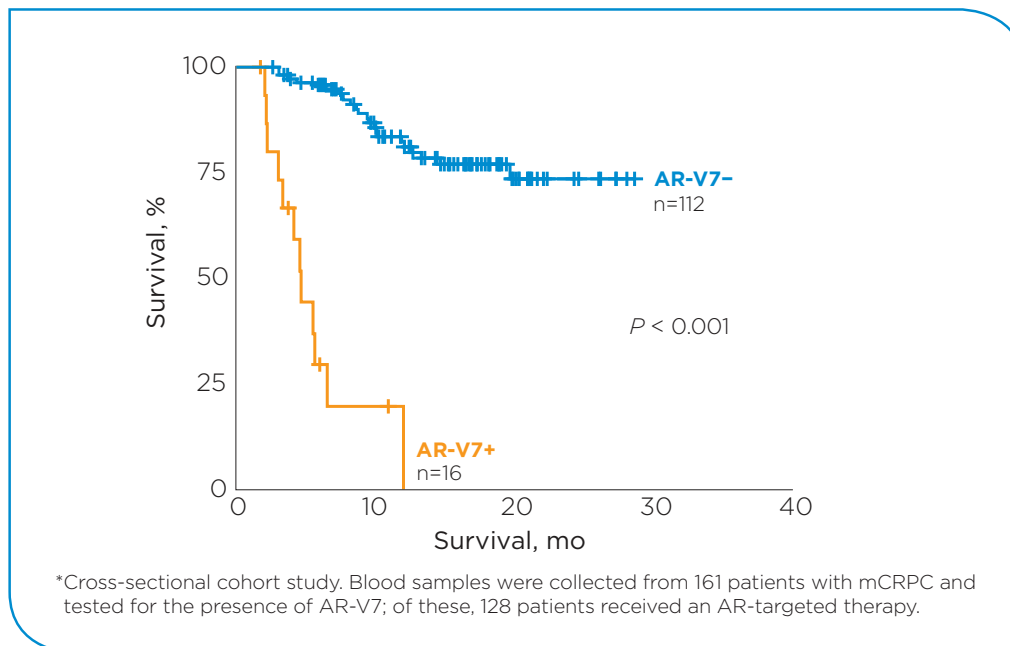


Nuclear AR-V7

Negative



Patients who were nuclear AR-V7+ had significantly reduced overall survival on AR-targeted therapies vs patients who were AR-V7-<sup>3\*</sup>



**ORDER NOW** for your patients with mCRPC

Contact your local Genomic Health® representative or Customer Service at 866 ONCOTYPE (866-662-6897).

**References:** 1. Antonarakis et al. *N Engl J Med*. 2014. 2. Scher et al. *Eur Urol*. 2016. 3. Scher et al. *JAMA Oncol*. 2016. 4. Antonarakis et al. *Expert Rev Anticancer Ther*. 2015. 5. Maughan et al. *Curr Treat Options Oncol*. 2015. 6. Scher et al. *JAMA Oncol*. 2018.

Oncotype DX AR-V7 Nucleus Detect, Genomic Health, Oncotype IQ and Making cancer care smarter are registered trademarks of Genomic Health, Inc. © 2018 Genomic Health, Inc. All rights reserved. GHI60002\_1018

oncotypeDX®  
AR-V7 Nucleus Detect  
powered by Epic Sciences



oncotypeIQ®  
Genomic Intelligence Platform

Genomic Health®  
LIFE. CHANGING.