

## OER-Elite related accessories



**Acecide-C 1,065ml**  
High-level Disinfectant

Peracetic acid based liquid chemical germicide designated for OER-Elite.



**Acecide-C Test Strips**  
Test strip for Acecide-C



**EndoQuick 2.8L**  
Alkaline Detergent

Formulated specifically for use with Olympus endoscope reprocessors.



**Gas Filter: MAJ-822**  
Charcoal filter absorbs disinfectant vapors.

**Air Filter: MAJ-823**  
Eliminates contaminants suspended in air.

**Water Filter: MAJ-824**  
Bacteria-retentive.



**Printer Paper Roll: MAJ-2003**  
**Printer Set: MAJ-2144**

**Printer Set: MAJ-2144**  
**Printer Paper Roll: MAJ-2003**  
One pack contains 4 rolls.



**Connecting Tubes**  
For feeding water or solution into the channels of scopes.



**Connector Hanger: MAJ-865**  
The connector hanger holds the connector portion of the endoscope and can be mounted on either side of the OER-Elite.

## Option



**UE (Unifia Environment)**  
The Unifia Environment solutions centralize and simplify reprocessing data collection helping to mitigate infection control risks in the reprocessing room.

Specifications, design and accessories are subject to change without any notice or obligation on the part of the manufacturer.

ENDOSCOPE REPROCESSOR  
**OER-Elite**  
Evolved Technology, Proven Reliability



# The Key to Effective Reprocessing

Beyond the Conventional – Newly Evolved System Smarter and More Advanced Than Ever

## Three Core Values of OER-Elite



### Smart

Easy setup via touch screen navigation

Error indication and recovery with touch screen

Automatic dry leak testing and leaking scope reprocessing

### Safe

Channel monitoring to reduce operation errors

Connector Fluid Overflow System for more effective reprocessing

Log data management

### Reliable

Ultrasonic cleaning

Alkaline detergent

High Level Disinfectant (PAA)

### ● Easy MRC Check

To maintain reprocessing performance, the disinfectant's Minimum Recommended Concentration must be checked prior to each cycle. With the OER-Elite, you can easily check the MRC via a port located at the top of the unit.



### ● Color-Coded Connectors

Each connector has a specified color matching the color of a connection tube, allowing easy connection via smart navigation on the touch screen.



2.9"  
Wide

1.3"  
Deep

### ● Wider and Deeper Basin

The OER-Elite is equipped with a scope basin that's 2.9-inch wider and 1.3-inch deeper than its predecessor (OER-Pro).

### ● Touch Screen

Enables intuitive operation via step-by-step navigation displayed on the easy-to-read LCD panel.





## Smart — Worry-free Operation

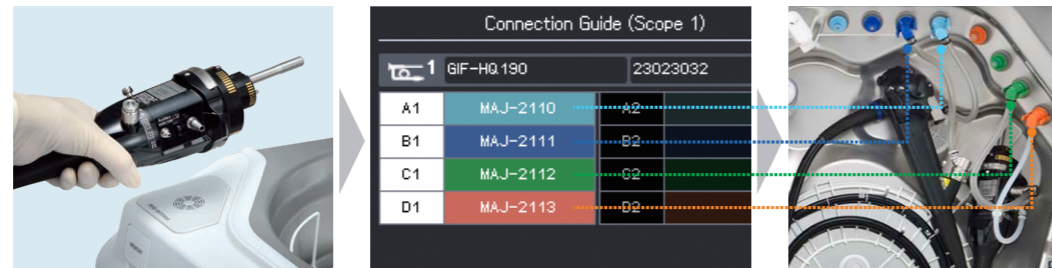
Easier setup via smart navigation on the touch screen display

### ▶ Smart Navigation with Touch Screen

# Smart

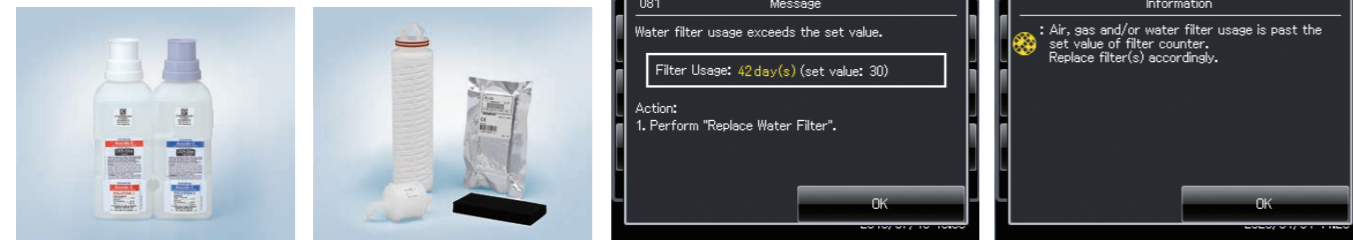
#### Connection guide

When the scope ID is read out via RFID, the connecting tubes you need are displayed on the touch screen panel. Just select the connecting tubes you see on the screen and attach them to the corresponding color-coded connector.



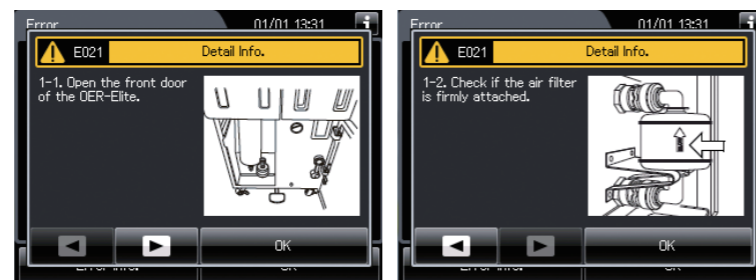
#### Consumables management

Once the predetermined period of time has elapsed, the replacement indicator blinks to let you know that it's time to replace the filter or disinfectant.



#### Error and recovery indications

If an error occurs, an error message is displayed on the touch screen panel. This tells you what you need to know about the error and how best to recover.



### ▶ Smart Provisions for Leaking Scopes

#### Automatic dry leak test

Leaks in the endoscope can be detected automatically without having to immerse the endoscope in the water.

#### Leaking scope reprocessing

This function makes it possible to decontaminate a leaking scope prior to returning it for servicing.

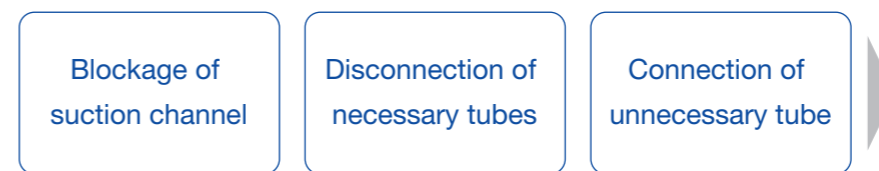
## Safe — Risk Mitigation

Multiple features to minimize risk potential in reprocessing

### ▶ Channel Monitoring System

# Safe

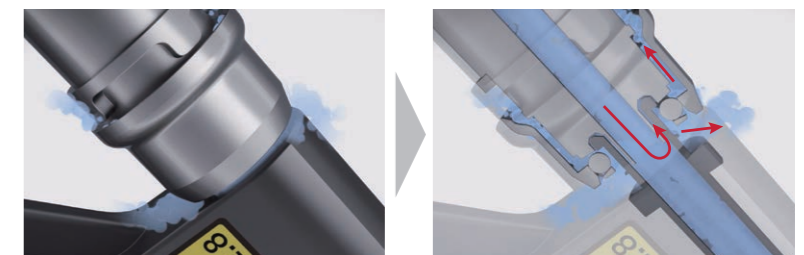
In addition to suction channel blockage monitoring, the OER-Elite can monitor the connecting tubes on both the endoscope and reprocessing basin to ensure that the correct tubes are properly connected. It will also notify you if the wrong tubes are connected. If an error is detected, the OER-Elite automatically stops reprocessing and displays an error message to let you know what the problem is.



\* Some endoscopes may not be eligible for Channel Monitoring System.

### ▶ Connector Fluid Overflow System

The connector fluid overflow system facilitates penetration of cleaning fluid into the connectors between the tubes and the scope, a feature made possible by fact that Olympus manufactures both endoscopes and reprocessor and so has a deeper understanding of the technical requirements.



### ▶ Log Data Management

A wide array of data can be input to the OER-Elite. Log data can be displayed on the touch screen panel or printout (optional), and can also be output via USB memory or on the centralized UE (Unifia Environment) (optional).

Record #	Date & Time	Scope	S.N.	Result
00008	12/19/2016 12:28 PM	CF-H190L	1000007	Pass
00007	12/19/2016 11:05 AM	GIF-H190	2000002	Leak
00006	12/18/2016 04:05 PM	GIF-H190	2000005	E000-1
00005	12/18/2016 03:28 PM	CF-H190L	1000007	Pass
00004	12/18/2016 02:28 PM	GIF-H190	2000002	Pass

# Reliable – Proven Efficacy

Reliable reprocessing effect with Olympus proprietary combined solutions

# Reliable

Fast acting PAA delivers High Level Disinfection with Acecide-C in 7 minutes resulting in a short 28-minute\* OER-Elite cycle time.

Confirmed combination – Ultrasonic cleaning + Alkaline detergent EndoQuick + High level disinfectant PAA basis Acecide-C

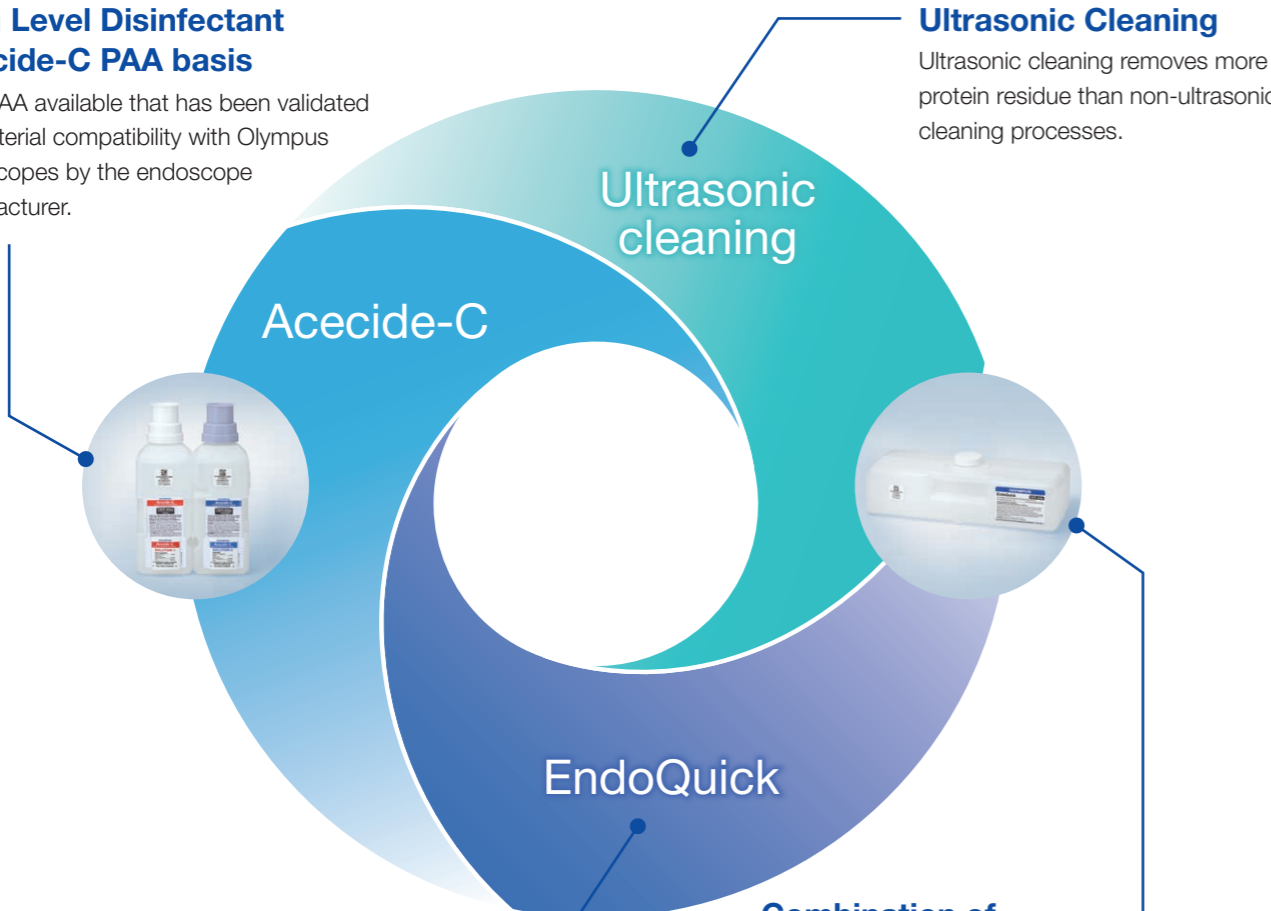
Effective cleaning with EndoQuick alkaline detergent and ultrasonic cleaning

### High Level Disinfectant Acecide-C PAA basis

Only PAA available that has been validated for material compatibility with Olympus endoscopes by the endoscope manufacturer.

### Ultrasonic Cleaning

Ultrasonic cleaning removes more protein residue than non-ultrasonic cleaning processes.



### Alkaline detergent EndoQuick

EndoQuick is an alkaline detergent that rapidly dissolves and removes organic residue at room temperature.

### Combination of Ultrasonic and EndoQuick

It has been established that the combination of ultrasonic cleaning and fluid cleaning using EndoQuick is the most effective way to remove test debris from the endoscope surface.

# And more...

Other features for more effective reprocessing and efficient workflow

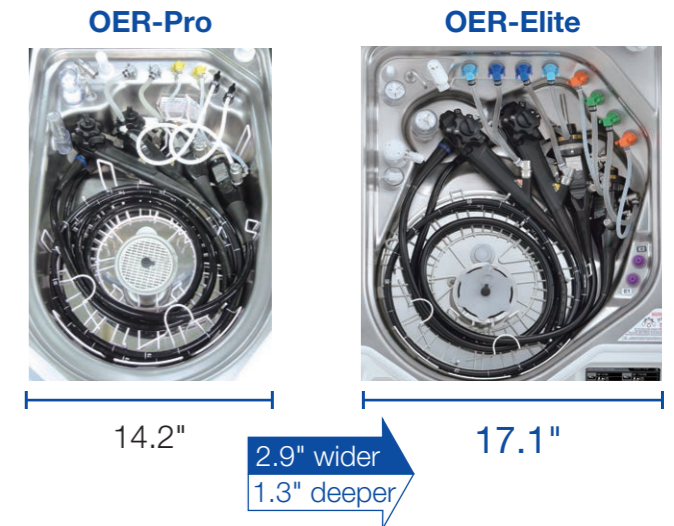
### Fast reprocessing time

- The OER-Elite reprocesses Olympus flexible endoscopes and other approved items in approximately 28 minutes\* even with new function processes. Modified cleaning is applicable in the same way as with the OER-Pro.
- Endoscopes with elevators may take slightly longer to reprocess, and may not be eligible for modified cleaning.



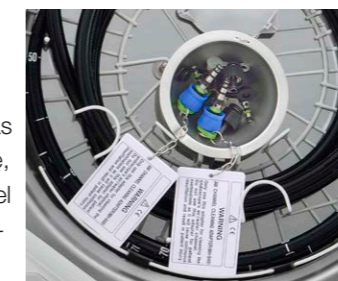
### Wider and deeper scope basin

The OER-Elite's scope basin is 2.9 inches wider and 1.3 inches deeper than the previous OER-Pro, making it possible to easily place two scopes in the basin for reprocessing at one time.



### Channel adapter cleaning (MH-948)

The OER-Elite has been designed to allow you to reprocess the endoscope and its accessories – such as air/water valve, suction valve, biopsy valve and AW channel cleaning adapter (MH-948) – at the same time.



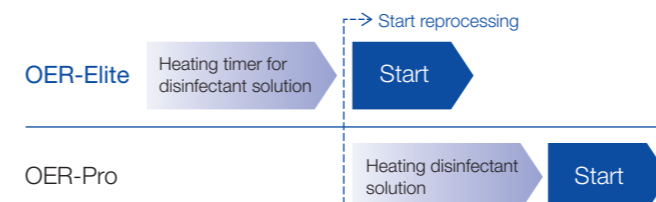
### Endoscopes with forceps elevator reprocessing

OER-Elite has a dedicated reprocessing cycle and connecting tube for endoscopes with a forceps elevator.



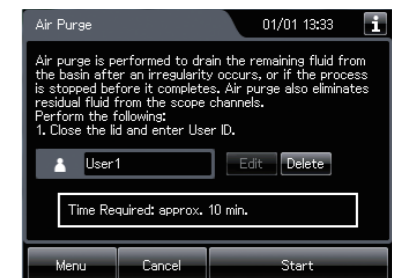
### Heating timer for disinfectant solution

The addition of a heating timer for disinfectant solution ensures that the OER-Elite will be ready for reprocessing even when starting early on a cold winter morning.



### Air purge drying (approx. 10 minutes)

The air purge process can eliminate residual fluid from endoscope channels for internal scope drying in approximately 10 minutes.



\* It takes approximately 28 minutes in Program 1.