



DETECT EARLY. TREAT EARLY.

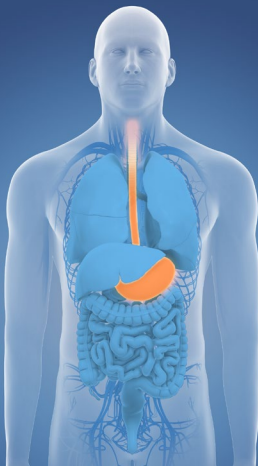
In more ways than ever

Early detection and treatment of chronic GI diseases and cancers are key to better outcomes. Discover how we can support you in achieving proactive GI care for your patients.

Medtronic
Further. Together

MINIMALLY
INVASIVE
OPTIONS
**TO HELP
YOU PROVIDE
PROACTIVE
GI CARE**





ESOPHAGEAL DISEASE

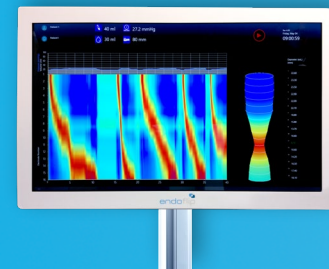
Providing definitive diagnosis and treatment for esophageal diseases to help patients across the care continuum.

EARLY DETECTION

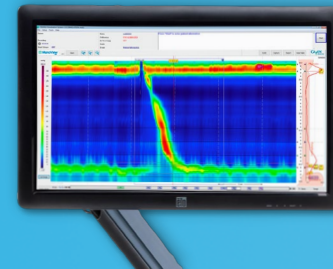
Cytosponge™
cell collection device



Endoflip™
impedance planimetry system



Manoscan™
ESO high resolution manometry system



Bravo™
calibration-free reflux testing system



Digitrapper™
ph-Z testing system

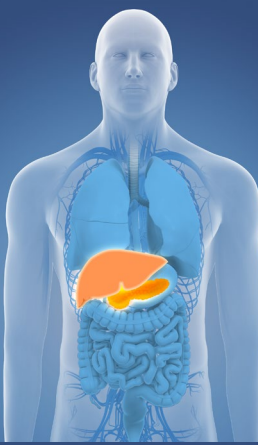
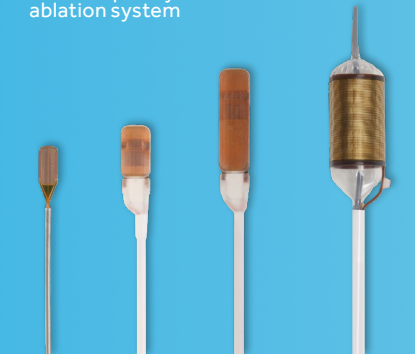


EARLY TREATMENT

Esoflip™
dilation catheter



Barrx™
radiofrequency ablation system



HEPATOPANCREATICOBILIARY DISEASE

Giving patients hope through early detection and treatment of pancreatic, biliary, and liver disease.

SharkCore™
FNB needle



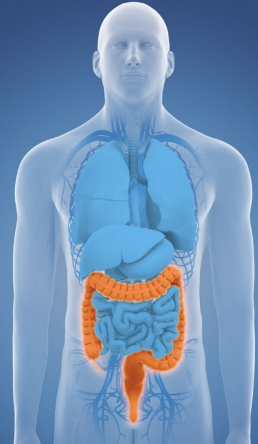
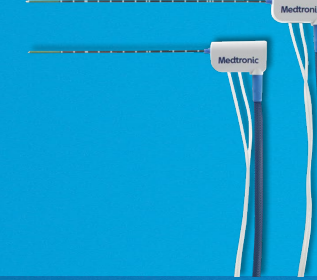
Beacon™
FNB needle



Beacon™
EUS access system



Emprint™ SX
ablation platform



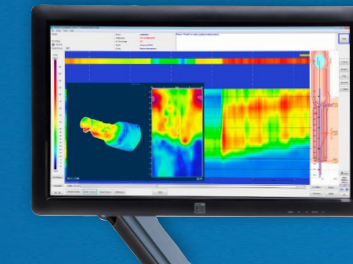
COLORECTAL DISEASE

Supporting colorectal disease patients with innovations enabling early detection and treatment.

PillCam™
COLON system



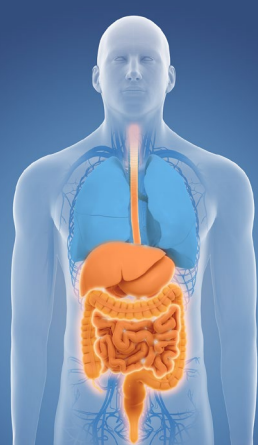
Manoscan™
AR high resolution manometry system



Eleview®
submucosal injectable composition



HET™
bipolar system



GI BLEEDING + CHRONIC DISEASE

Helping patients with GI bleeding and chronic diseases through technologies to diagnose and treat their diseases.

SmartPill™
motility testing system



PillCam™
Crohn's system



PillCam™
patency capsule



PillCam™
SB 3 system



Barrx™
SB RFA endoscopic catheter



PARTNERSHIP THAT GOES BEYOND OUR PRODUCTS

Our services will **expand your ability to deliver early detection and treatment** of gastrointestinal and hepatological diseases and cancers. Our support will eliminate barriers and **strengthen your business** with **high-quality, reliable resources** that include:

- Reimbursement support
- Medical affairs
- Education
- Technical support
- Marketing

For more information
visit [detectearlytreatearly.com](https://www.detectearlytreatearly.com)
or contact your Medtronic representative.



Caution: Federal law restricts these devices to sale by or on the order of a licensed healthcare practitioner. Rx only.

Risk Information: Similar to most procedures, the products featured here have inherent procedure risks associated. Please refer to the individual product user manuals for detailed information.

*These images do not represent all components of the system

US160443(1)c ©2019 Medtronic. All rights reserved. Medtronic, Medtronic logo and Further, Together are trademarks of Medtronic.

®™ Third party brands are trademarks of their respective owners. All other brands are trademarks of a Medtronic company.

Medtronic