



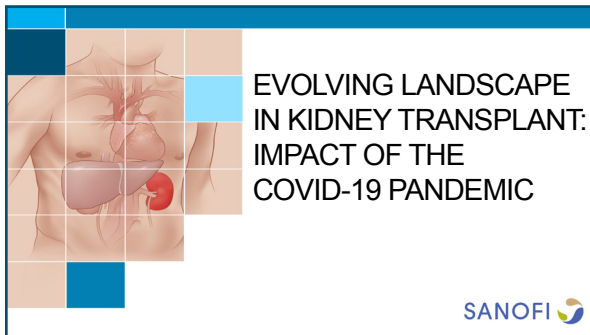
TRANSPLANTATION EDUCATIONAL INITIATIVE

A Sanofi collaboration with the kidney transplant community to provide meaningful and relevant education to enhance the knowledge and understanding of health care professionals

This Program is conducted by Sanofi. No CME credits are available.

Educational Offerings

- Sanofi has developed 7 high-quality, educational slide presentations that will be delivered by experts in the field:
 - Evolving Landscape in Kidney Transplant: Impact of the COVID-19 Pandemic
 - Enhancing Evaluation of Living Kidney Donors: The Road to a Paradigm Shift
 - The Opioid Epidemic and Its Impact on Kidney Transplantation
 - The Changing Face of Allograft Rejection: Antibody-Mediated Rejection Takes Center Stage
 - Increasing Access to Kidney Transplantation
 - Measuring Outcomes for Transplant: Using the SRTR to Improve Center Performance
 - Updates in Kidney Allocation: Impact on Transplantation
- These presentations, available live and virtually, are appropriate for both large and small audiences and aim to facilitate relevant discussions between colleagues



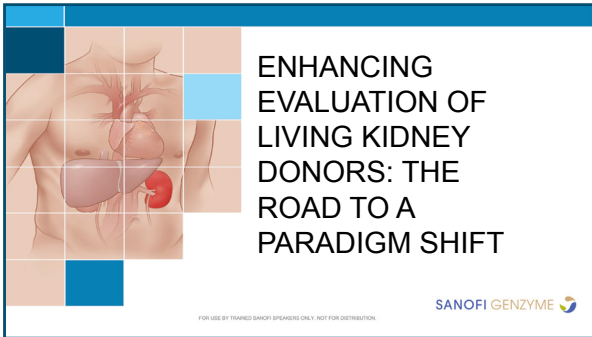
EVOLVING LANDSCAPE IN KIDNEY TRANSPLANT: Impact of the COVID-19 Pandemic

Program Objectives

- Understand the fundamental biology, epidemiology, and clinical course of the novel coronavirus, SARS-CoV-2
- Compare various methods for detection of SARS-CoV-2 and the associated timeline and biology
- Quantify the impact of the novel coronavirus pandemic (COVID-19) in the transplant population across the US using early data
- Evaluate the characteristics and early clinical outcomes of solid organ transplant patients in the US who have been infected with SARS-CoV-2

Presenter	Title/Institution
Suphamai Bunnapradist MD, MS, FACP, FASN Nephrologist Los Angeles, CA	Professor of Medicine Director of Research Kidney Transplant Program Division of Nephrology Department of Medicine UCLA Medical Center
Edward Dominguez, MD, FACP, FIDSA Infectious Disease Dallas, TX	Medical Director, Organ Transplant Infectious Disease Methodist Health System
Richard Formica, MD, FAST Nephrologist New Haven, CT	Professor of Medicine and Surgery Director of Transplant Medicine Director of Outpatient Transplantation Service Director of Transplant Nephrology Medical Director of Adult Kidney Transplantation Section of Nephrology/Department of Medicine Yale University School of Medicine
Christina Klein, MD Nephrologist Atlanta, GA	Medical Director, Kidney and Pancreas Transplant Program Piedmont Transplant Institute
Richard J. Knight, MD Surgeon Houston, TX	Professor of Surgery Houston Methodist Weill Cornell Medical College
Dicken Ko, MD Transplant Surgeon Providence, RI	Transplant Surgeon Rhode Island Hospital
Mark Laftavi, MD Surgeon Syracuse, NY	Professor of Surgery Interim Chief of Transplant Services Upstate University Hospital
Krista L. Lentine, MD, PhD Nephrologist Saint Louis, MO	Medical Director, Living Donor Evaluation and Follow-up Saint Louis University School of Medicine

Presenter	Title/Institution
Marlon F. Levy, MD Surgeon Richmond, VA	Director, Hume-Lee Transplant Center Professor of Transplant Surgery Virginia Commonwealth University Medical Center
Jayme Locke, MD Surgeon Birmingham, AL	Director, UAB Comprehensive Transplant Institute Associate Chief Medical Officer for Inpatient Quality and Patient Safety Associate Professor of Surgery Chief, Division of Transplantation University of Alabama at Birmingham
Joseph Lockridge, MD Nephrologist Portland, OR	Assistant Professor of Medicine and Medical Director, Portland VA Medical Center Transplantation Kidney Assistant Professor of Medicine, Division of Nephrology and Hypertension School of Medicine
Dorry Segev, MD, PhD Surgeon Baltimore, MD	Professor of Surgery Associate Vice Chair for Research Johns Hopkins University
Fuad Shihab, MD Nephrologist Salt Lake City, UT	Professor of Medicine Division of Nephrology University of Utah School of Medicine Medical Director of the Kidney and Pancreas Transplantation Programs Medical Director, Kidney Clinic University of Utah Health Care
Rafael Villicana, MD Nephrologist Loma Linda, CA	Medical Director, Transplant Nephrology Loma Linda University
Jason Wellen, MD Surgeon Saint Louis, MO	Assistant Professor of Surgery Director, Kidney and Pancreatic Transplantation Washington University School of Medicine Barnes-Jewish Hospital
Alex Wiseman, MD Nephrologist Denver, CO	Executive Director, Kidney Transplantation Centura Health



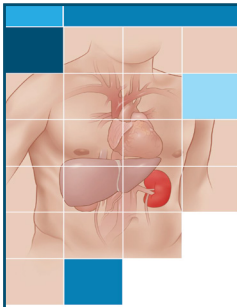
ENHANCING EVALUATION OF LIVING KIDNEY DONORS: The Road to a Paradigm Shift

Questions Explored

- How do racial disparities affect the living kidney donor (LKD) evaluation process and what could contribute to this?
- What new tools are available to evaluate the risk of end-stage renal disease (ESRD) for LKDs, and how can these tools help in the donor evaluation process?
- How has HIV+ living donation helped HIV+ recipients, and how has the paradigm of living kidney donation in this population shifted over the years?
- What steps can be taken within the transplant community to better support LKDs and emphasize the need for LKD follow-up?

Presenter	Title/Institution
Suphamai Bunnapradist MD, MS, FACP, FASN Nephrologist Los Angeles, CA	Professor of Medicine Director of Research Kidney Transplant Program Division of Nephrology Department of Medicine UCLA Medical Center
Richard Formica, MD, FAST Nephrologist New Haven, CT	Professor of Medicine and Surgery Director of Transplant Medicine Director of Outpatient Transplantation Service Director of Transplant Nephrology Medical Director of Adult Kidney Transplantation Section of Nephrology/Department of Medicine Yale University School of Medicine
Christina Klein, MD Nephrologist Atlanta, GA	Medical Director, Kidney and Pancreas Transplant Program Piedmont Transplant Institute
Richard J. Knight, MD Surgeon Houston, TX	Professor of Surgery Houston Methodist Weill Cornell Medical College
Krista L. Lentine, MD, PhD Nephrologist Saint Louis, MO	Medical Director, Living Donor Evaluation and Follow-up Saint Louis University School of Medicine
Jayne Locke, MD Surgeon Birmingham, AL	Director, UAB Comprehensive Transplant Institute Associate Chief Medical Officer for Inpatient Quality and Patient Safety Associate Professor of Surgery Chief, Division of Transplantation University of Alabama at Birmingham
Joseph Lockridge, MD Nephrologist Portland, OR	Assistant Professor of Medicine and Medical Director, Portland VA Medical Center Transplantation Kidney Assistant Professor of Medicine, Division of Nephrology and Hypertension School of Medicine

Presenter	Title/Institution
Dorry Segev, MD, PhD Surgeon Baltimore, MD	Professor of Surgery Associate Vice Chair for Research Johns Hopkins University
Jason Wellen, MD Surgeon Saint Louis, MO	Assistant Professor of Surgery Director, Kidney and Pancreatic Transplantation Washington University School of Medicine Barnes-Jewish Hospital
Alex Wiseman, MD Nephrologist Denver, CO	Executive Director, Kidney Transplantation Centura Health



THE OPIOID EPIDEMIC AND ITS IMPACT ON KIDNEY TRANSPLANTATION

FOR USE BY TRAINED SANOFI SPEAKERS ONLY. NOT FOR DISTRIBUTION.



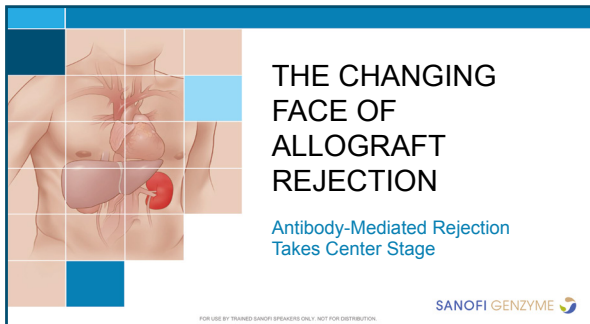
THE OPIOID EPIDEMIC AND ITS IMPACT ON KIDNEY TRANSPLANTATION

Program Objectives

- Understand the impact of the current opioid epidemic on transplantation in the US
- Discuss the benefits/risks of accepting an infectious risk donor (IRD) kidney compared with remaining on the waitlist
- Examine the use and effect of hepatitis C virus-positive (HCV⁺) kidneys in hepatitis C virus-negative (HCV⁻) recipients in the era of direct-acting antivirals (DAAs)
- Discuss the benefits/risks of transplants from HIV⁺ donor to HIV⁺ recipient

Presenter	Title/Institution
Sridhar Allam, MD Nephrologist Fort Worth, TX	Medical Director of Kidney Transplantation Medical City Fort Worth Transplant Institute
Rita R. Alloway, PharmD Pharmacology Cincinnati, OH	Research Professor of Nephrology Director of Transplant Clinical Research and Specialty University of Cincinnati College of Medicine
Suphamai Bunnapradist MD, MS, FACP, FASN Nephrologist Los Angeles, CA	Professor of Medicine Director of Research Kidney Transplant Program Division of Nephrology Department of Medicine UCLA Medical Center
Edward Dominguez, MD, FACP, FIDSA Infectious Disease Dallas, TX	Medical Director, Organ Transplant Infectious Disease Methodist Health System
Christina Klein, MD Nephrologist Atlanta, GA	Medical Director, Kidney and Pancreas Transplant Program Piedmont Transplant Institute
Dicken Ko, MD Transplant Surgeon Providence, RI	Transplant Surgeon Rhode Island Hospital
Krista L. Lentine, MD, PhD Nephrologist Saint Louis, MO	Medical Director, Living Donor Evaluation and Follow-up Saint Louis University School of Medicine
Marlon F. Levy, MD Surgeon Richmond, VA	Director, Hume-Lee Transplant Center Professor of Transplant Surgery Virginia Commonwealth University Medical Center
Jayne Locke, MD Surgeon Birmingham, AL	Director, UAB Comprehensive Transplant Institute Associate Chief Medical Officer for Inpatient Quality and Patient Safety Associate Professor of Surgery Chief, Division of Transplantation University of Alabama at Birmingham

Presenter	Title/Institution
<p>Joseph Lockridge, MD Nephrologist Portland, OR</p>	<p>Assistant Professor of Medicine and Medical Director, Portland VA Medical Center Transplantation Kidney Assistant Professor of Medicine, Division of Nephrology and Hypertension School of Medicine</p>
<p>Michael Marvin, MD Surgeon Danville, PA</p>	<p>Director, Department of Transplantation and Liver Surgery Geisinger Medical Center</p>
<p>Dorry Segev, MD, PhD Surgeon Baltimore, MD</p>	<p>Professor of Surgery Associate Vice Chair for Research Johns Hopkins University</p>
<p>Rafael Villicana, MD Nephrologist Loma Linda, CA</p>	<p>Medical Director, Transplant Nephrology Loma Linda University</p>
<p>Jason Wellen, MD Surgeon Saint Louis, MO</p>	<p>Assistant Professor of Surgery Director, Kidney and Pancreatic Transplantation Washington University School of Medicine Barnes-Jewish Hospital</p>
<p>Alex Wiseman, MD Nephrologist Denver, CO</p>	<p>Executive Director, Kidney Transplantation Centura Health</p>



THE CHANGING FACE OF ALLOGRAFT REJECTION

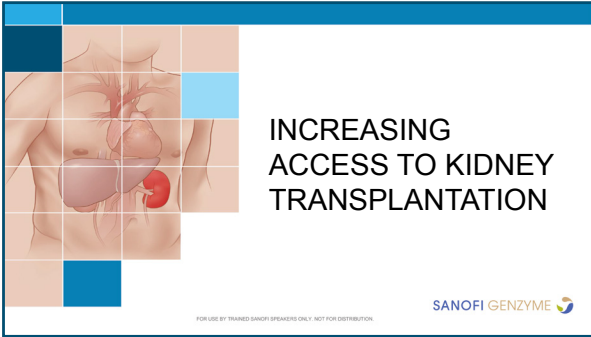
Antibody-Mediated Rejection Takes Center Stage

Program Objectives

- Understand that T-cell-mediated rejection can cause early graft loss but may be manageable with immunosuppressive therapies
- Understand how antibody-mediated rejection can lead to chronic kidney transplant rejection through multiple mechanisms and is a major contributor of late graft loss
- Recognize how advances in understanding rejection at the molecular level may improve detection and diagnostics
- Identify treatment options for antibody-mediated rejection

Presenter	Title/Institution
Sridhar Allam, MD Nephrologist Fort Worth, TX	Medical Director of Kidney Transplantation Medical City Fort Worth Transplant Institute
Rita R. Alloway, PharmD Pharmacology Cincinnati, OH	Research Professor of Nephrology Director of Transplant Clinical Research and Specialty University of Cincinnati College of Medicine
Richard J. Knight, MD Surgeon Houston, TX	Professor of Surgery Houston Methodist Weill Cornell Medical College
Mark Laftavi, MD Surgeon Syracuse, NY	Professor of Surgery Interim Chief of Transplant Services Upstate University Hospital
Krista L. Lentine, MD, PhD Nephrologist Saint Louis, MO	Medical Director, Living Donor Evaluation and Follow-up Saint Louis University School of Medicine
Marlon F. Levy, MD Surgeon Richmond, VA	Director, Hume-Lee Transplant Center Professor of Transplant Surgery Virginia Commonwealth University Medical Center
Jayne Locke, MD Surgeon Birmingham, AL	Director, UAB Comprehensive Transplant Institute Associate Chief Medical Officer for Inpatient Quality and Patient Safety Associate Professor of Surgery Chief, Division of Transplantation University of Alabama at Birmingham
Jesse Schold, PhD Transplant Outcomes Research Specialist Cleveland, OH	Associate Staff, Health Outcomes Research and Clinical Epidemiology Department of Quantitative Health Sciences Director, Outcomes Research and Medical Informatics Kidney and Kidney/Pancreas Transplantation Glickman Urological and Kidney Institute Cleveland Clinic

Presenter	Title/Institution
<p>Fuad Shihab, MD Nephrologist Salt Lake City, UT</p>	<p>Professor of Medicine Division of Nephrology University of Utah School of Medicine Medical Director of the Kidney and Pancreas Transplantation Programs Medical Director, Kidney Clinic University of Utah Health Care</p>
<p>Rafael Villicana, MD Nephrologist Loma Linda, CA</p>	<p>Medical Director, Transplant Nephrology Loma Linda University</p>
<p>Jason Wellen, MD Surgeon Saint Louis, MO</p>	<p>Assistant Professor of Surgery Director, Kidney and Pancreatic Transplantation Washington University School of Medicine Barnes-Jewish Hospital</p>
<p>Alex Wiseman, MD Nephrologist Denver, CO</p>	<p>Executive Director, Kidney Transplantation Centura Health</p>
<p>E. Steve Woodle Surgeon Cincinnati, OH</p>	<p>Professor of Surgery Director, Division of Transplantation Director, Israel Penn International Transplant Tumor Registry University of Cincinnati College of Medicine</p>



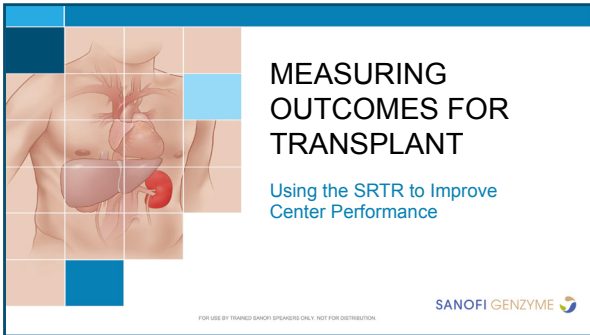
INCREASING ACCESS TO KIDNEY TRANSPLANTATION

Program Objectives

- Review kidney transplantation and discuss the need to increase transplantation rates
- Compare transplantation outcomes of high-Kidney Donor Profile Index (KDPI) kidneys to remaining on dialysis and waiting for low-KDPI kidneys
- Discuss transplantation with underutilized sources of deceased donor (DD) kidneys
- Examine available strategies to increase the living donor (LD) kidney pool, including improving risk prediction and increasing access through kidney-paired donation (KPD)
- Discuss programs and resources designed to increase transplant knowledge and access through patient and caregiver education

Presenter	Title/Institution
Sridhar Allam, MD Nephrologist Fort Worth, TX	Medical Director of Kidney Transplantation Medical City Fort Worth Transplant Institute
Suphamai Bunnapradist MD, MS, FACP, FASN Nephrologist Los Angeles, CA	Professor of Medicine Director of Research Kidney Transplant Program Division of Nephrology Department of Medicine UCLA Medical Center
Jay Graham, MD, MBA, FACS Transplant Surgeon Bronx, NY	Associate Professor of Surgery Surgical Director of Pancreas Transplantation Montefiore Medical Center
Christina Klein, MD Nephrologist Atlanta, GA	Medical Director, Kidney and Pancreas Transplant Program Piedmont Transplant Institute
Richard J. Knight, MD Surgeon Houston, TX	Professor of Surgery Houston Methodist Weill Cornell Medical College
Mark Laftavi, MD Surgeon Syracuse, NY	Professor of Surgery Interim Chief of Transplant Services Upstate University Hospital
Krista L. Lentine, MD, PhD Nephrologist Saint Louis, MO	Medical Director, Living Donor Evaluation and Follow-up Saint Louis University School of Medicine

Presenter	Title/Institution
<p>Marlon F. Levy, MD Surgeon Richmond, VA</p>	<p>Director, Hume-Lee Transplant Center Professor of Transplant Surgery Virginia Commonwealth University Medical Center</p>
<p>Jayme Locke, MD Surgeon Birmingham, AL</p>	<p>Director, UAB Comprehensive Transplant Institute Associate Chief Medical Officer for Inpatient Quality and Patient Safety Associate Professor of Surgery Chief, Division of Transplantation University of Alabama at Birmingham</p>
<p>Michael Marvin, MD Surgeon Danville, PA</p>	<p>Director, Department of Transplantation and Liver Surgery Geisinger Medical Center</p>
<p>Dorry Segev, MD, PhD Surgeon Baltimore, MD</p>	<p>Professor of Surgery Associate Vice Chair for Research Johns Hopkins University</p>
<p>Fuad Shihab, MD Nephrologist Salt Lake City, UT</p>	<p>Professor of Medicine Division of Nephrology University of Utah School of Medicine Medical Director of the Kidney and Pancreas Transplantation Programs Medical Director, Kidney Clinic University of Utah Health Care</p>
<p>Jason Wellen, MD Surgeon Saint Louis, MO</p>	<p>Assistant Professor of Surgery Director, Kidney and Pancreatic Transplantation Washington University School of Medicine Barnes-Jewish Hospital</p>
<p>Alex Wiseman, MD Nephrologist Denver, CO</p>	<p>Executive Director, Kidney Transplantation Centura Health</p>
<p>E. Steve Woodle Surgeon Cincinnati, OH</p>	<p>Professor of Surgery Director, Division of Transplantation Director, Israel Penn International Tumor Registry University of Cincinnati College of Medicine</p>



MEASURING OUTCOMES FOR TRANSPLANT

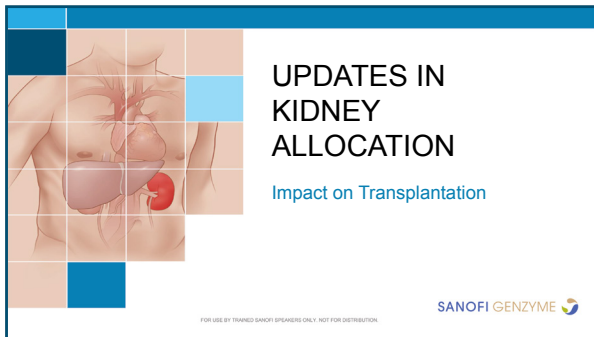
Using the SRTR to Improve Center Performance

Program Objectives

- Review Program-Specific Reports (PSRs) and Cumulative Sum (CUSUM) reports issued by the Scientific Registry of Transplant Recipients (SRTR)
- Describe how PSRs are used to evaluate transplant centers and how centers respond to PSR flags
- Understand the impact of risk adjustment on center outcomes
- Compare and contrast measurements within PSRs and CUSUM reports and how they are used to improve patient outcomes

Presenter	Title/Institution
Rita R. Alloway, PharmD Pharmacology Cincinnati, OH	Research Professor of Nephrology Director of Transplant Clinical Research and Specialty University of Cincinnati College of Medicine
Richard J. Knight, MD Surgeon Houston, TX	Professor of Surgery Houston Methodist Weill Cornell Medical College
Mark Laftavi, MD Surgeon Syracuse, NY	Professor of Surgery Interim Chief of Transplant Services Upstate University Hospital
Krista L. Lentine, MD, PhD Nephrologist Saint Louis, MO	Medical Director, Living Donor Evaluation and Follow-up Saint Louis University School of Medicine
Marlon F. Levy, MD Surgeon Richmond, VA	Director, Hume-Lee Transplant Center Professor of Transplant Surgery Virginia Commonwealth University Medical Center
Jayne Locke, MD Surgeon Birmingham, AL	Director, UAB Comprehensive Transplant Institute Associate Chief Medical Officer for Inpatient Quality and Patient Safety Associate Professor of Surgery Chief, Division of Transplantation University of Alabama at Birmingham
Michael Marvin, MD Surgeon Danville, PA	Director, Department of Transplantation and Liver Surgery Geisinger Medical Center
Jesse Schold, PhD Transplant Outcomes Research Specialist Cleveland, OH	Associate Staff, Health Outcomes Research and Clinical Epidemiology Department of Quantitative Health Sciences Director, Outcomes Research and Medical Informatics Kidney and Kidney/Pancreas Transplantation Glickman Urological and Kidney Institute Cleveland Clinic

Presenter	Title/Institution
Rafael Villicana, MD Nephrologist Loma Linda, CA	Medical Director, Transplant Nephrology Loma Linda University
Jason Wellen, MD Surgeon Saint Louis, MO	Assistant Professor of Surgery Director, Kidney and Pancreatic Transplantation Washington University School of Medicine Barnes-Jewish Hospital
Alex Wiseman, MD Nephrologist Denver, CO	Executive Director, Kidney Transplantation Centura Health
E. Steve Woodle Surgeon Cincinnati, OH	Professor of Surgery Director, Division of Transplantation Director, Israel Penn International Transplant Tumor Registry University of Cincinnati College of Medicine



UPDATES IN KIDNEY ALLOCATION

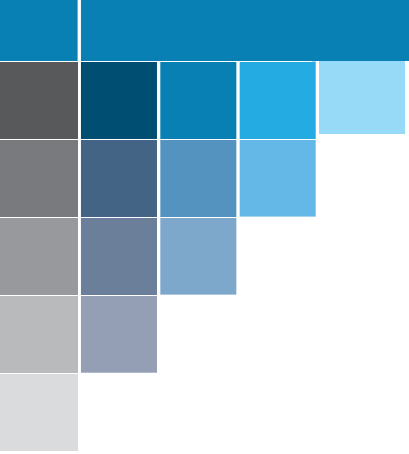
Impact on Transplantation

Program Objectives

- Discuss the current kidney allocation policies, which focus on achieving a balance between equity and utility
- Highlight the effects of the latest Kidney Allocation System (KAS) revisions on transplant processes and outcomes
- Review the latest available data (year 1 and year 2) on outcomes of the current KAS vs corresponding data from the last year of the prior system

Presenter	Title/Institution
Richard Formica, MD, FAST Nephrologist New Haven, CT	Professor of Medicine and Surgery Director of Transplant Medicine Director of Outpatient Transplantation Service Director of Transplant Nephrology Medical Director of Adult Kidney Transplantation Section of Nephrology/Department of Medicine Yale University School of Medicine
John Friedewald, MD Nephrologist Chicago, IL	Transplant Nephrologist Northwestern Memorial Hospital Kovler Organ Transplant Center Assistant Professor of Medicine and Surgery Northwestern University Feinberg School of Medicine
Jay Graham, MD, MBA, FACS Transplant Surgeon Bronx, NY	Associate Professor of Surgery Surgical Director of Pancreas Transplantation Montefiore Medical Center
Christina Klein, MD Nephrologist Atlanta, GA	Medical Director, Kidney and Pancreas Transplant Program Piedmont Transplant Institute
Richard J. Knight, MD Surgeon Houston, TX	Professor of Surgery Houston Methodist Weill Cornell Medical College
Mark Laftavi, MD Surgeon Syracuse, NY	Professor of Surgery Interim Chief of Transplant Services Upstate University Hospital
Krista L. Lentine, MD, PhD Nephrologist Saint Louis, MO	Medical Director, Living Donor Evaluation and Follow-up Saint Louis University School of Medicine
Jayme Locke, MD Surgeon Birmingham, AL	Director, UAB Comprehensive Transplant Institute Associate Chief Medical Officer for Inpatient Quality and Patient Safety Associate Professor of Surgery Chief, Division of Transplantation University of Alabama at Birmingham

Presenter	Title/Institution
Michael Marvin, MD Surgeon Danville, PA	Director, Department of Transplantation and Liver Surgery Geisinger Medical Center
Jesse Schold, PhD Transplant Outcomes Research Specialist Cleveland, OH	Associate Staff, Health Outcomes Research and Clinical Epidemiology Department of Quantitative Health Sciences Director, Outcomes Research and Medical Informatics Kidney and Kidney/Pancreas Transplantation Glickman Urological and Kidney Institute Cleveland Clinic
Dorry Segev, MD, PhD Surgeon Baltimore, MD	Professor of Surgery Associate Vice Chair for Research Johns Hopkins University
Fuad Shihab, MD Nephrologist Salt Lake City, UT	Professor of Medicine Division of Nephrology University of Utah School of Medicine Medical Director of the Kidney and Pancreas Transplantation Programs Medical Director, Kidney Clinic University of Utah Health Care
Rafael Villicana MD Nephrologist Loma Linda, CA	Medical Director, Transplant Nephrology Loma Linda University
Jason Wellen, MD Surgeon Saint Louis, MO	Assistant Professor of Surgery Director, Kidney and Pancreatic Transplantation Washington University School of Medicine Barnes-Jewish Hospital
Alex Wiseman, MD Nephrologist Denver, CO	Executive Director, Kidney Transplantation Centura Health
E. Steve Woodle Surgeon Cincinnati, OH	Professor of Surgery Director, Division of Transplantation Director, Israel Penn International Tumor Registry University of Cincinnati College of Medicine



For more information, or to schedule or attend an educational program,
contact your Sanofi representative.

Name: _____

Phone: _____

Email: _____

