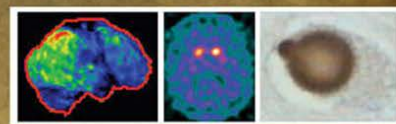




International Dementia with Lewy Bodies Conference

December 1-4, 2015
Fort Lauderdale, Florida USA



Scientific Track

Monday, November 30 Registration and Welcome Reception		
Time	Event/Title	Speaker/Participants
1800 - 1930	Welcome reception and pre-registration	Participants
Tuesday, December 1 – Day 1 DLB Review and Update		
Time	Event/Title	Speaker/Participants
Prelude		
0730 - 0745	Conference overview	Organizers
0745 - 0800	A caregiver's perspective of DLB	Angela Taylor LBDA
Session 1: DLB Update - Clinical		
Session Chair: TBA		
0800 - 0820	DLB history, differential diagnosis and diagnostic features	Ian McKeith Newcastle University
0820 - 0840	Key clinical, epidemiologic, neuropsychological, and imaging features of DLB	Brad Boeve Mayo Clinic Rochester
0840 - 0900	DLB: Tools for the clinician	Jim Galvin Florida Atlantic University
0900 - 0930	Discussion	Panel and audience
0930 - 1000	<i>Break</i>	
Session 2: DLB Update - Biomarkers		
Session Chair: TBA		
1000 - 1020	Cross-sectional and longitudinal structural imaging studies in DLB	John O'Brien Cambridge University
1020 - 1040	Functional imaging changes in DLB	Nicolas Bohnen University of Michigan
1040 - 1100	Electrophysiologic correlates of DLB	John-Paul Taylor Newcastle University
1100 - 1130	Discussion	Panel and audience
1130 - 1300	<i>Lunch</i>	
Session 3: DLB Update – Neuropathology/Genetic/Basic Science		
Session Chair: TBA		
1300 - 1320	Historical perspective of DLB and Lewy body disease	Kenji Kosaka Yokohama Univ.
1320 - 1340	Neuropathologic perspectives of Lewy body disease	Dennis Dickson Mayo Clinic Florida
1340 - 1400	Genetic perspectives of DLB	Jose Bras University College London
1400 - 1420	Molecular biology and animal models of Lewy body disease	Virginia Lee University of Pennsylvania

Program schedule subject to change.

1420 - 1445	Discussion	Panel and audience
1445 - 1515	<i>Break</i>	
Session 4: DLB Update – Therapeutics		
Session Chair: TBA		
1515 - 1535	Cholinesterase inhibitors and memantine	Zuzana Walker University College London
1535 - 1555	Antipsychotics	Clive Ballard King's College London
1555 - 1615	Antiparkinsonism agents	David Burn Newcastle University
1615 - 1645	Discussion	Panel and audience
Wednesday, December 2 – Day 2 New Research in DLB I		
Time	Event/Title	Speaker/Participants
0700 - 0800	Breakfast	Participants
Session 5: Clinical I		
Session Chair: TBA		
0800 - 0820	Cognitive neuroscience approach to DLB	David Salmon UC San Diego
0820 - 0840	Visual hallucinations in DLB	Dominic Ffytche King's College London
0840 - 0855	Presentation selected from submitted abstracts (title TBA)	TBA
0855 - 0910	Presentation selected from submitted abstracts (title TBA)	TBA
0910 - 0925	Presentation selected from submitted abstracts (title TBA)	TBA
0925 - 0945	Discussion	Speakers and audience
0945 - 1015	<i>Break</i>	
Session 6: Clinical II		
Session Chair: TBA		
1015 - 1035	Sleep issues in DLB, including prodromal DLB	Alex Iranzo Hospital Clinic Barcelona
1035 - 1055	Motor and autonomic issues in DLB, including prodromal DLB	Ron Postuma McGill University
1055 - 1110	Presentation selected from submitted abstracts (title TBA)	TBA
1110 - 1125	Presentation selected from submitted abstracts (title TBA)	TBA
1125 - 1140	Presentation selected from submitted abstracts (title TBA)	TBA
1140 - 1200	Discussion	Speakers and audience
1200 - 1315	<i>Lunch</i>	
Session 7: Imaging		
Session Chair: TBA		
1315 - 1335	Imaging-pathologic correlations in DLB	Kejal Kantarci Mayo Clinic Rochester
1335 - 1355	Imaging in prodromal DLB	Alan Thomas Newcastle University
1355 - 1410	Presentation selected from submitted abstracts (title TBA)	TBA
1410 - 1425	Presentation selected from submitted abstracts (title TBA)	TBA
1425 - 1440	Presentation selected from submitted abstracts (title TBA)	TBA
1440 - 1500	Discussion	Speakers and audience
1500 - 1530	<i>Break</i>	
Session 8: Working Groups or Recreation/Leisure Time		
1530 - 1700	Clinical Diagnosis and Management Working Groups	Working group staff
1530 - 1700	Recreation/Leisure Time	All other conference

		participants
1700 - 1830	Poster Session	All conference participants
Thursday, December 3 – Day 3 New Research in DLB II		
Time	Event/Title	Speaker/Participants
0700 - 0800	Breakfast	Participants
Session 9: Neuropathology/Molecular Biology/Animal Models		
Session Chair: TBA		
0800 - 0820	Models of pathogenesis	Glenda Halliday Univ. New South Wales
0820 - 0840	Cell to cell transmission of synucleinopathies	Patrik Brundin Van Andel Institute
0840 - 0855	Presentation selected from submitted abstracts (title TBA)	TBA
0855 - 0910	Presentation selected from submitted abstracts (title TBA)	TBA
0910 - 0925	Presentation selected from submitted abstracts (title TBA)	TBA
0925 - 0945	Discussion	Speakers and audience
0945 - 1015	<i>Break</i>	
Session 10: Genetics/Biofluid Markers		
Session Chair: TBA		
1015 - 1035	Alpha-synuclein oligomers as a biomarker	Omar El-Agnaf United Arab Emirates Univ.
1035 - 1055	Blood-based (protein) biomarker efforts in Parkinson's disease and Alzheimer's disease: Potential applicability to DLB	Alice Chen-Plotkin University of Pennsylvania
1055 - 1110	Presentation selected from submitted abstracts (title TBA)	TBA
1110 - 1125	Presentation selected from submitted abstracts (title TBA)	TBA
1125 - 1140	Presentation selected from submitted abstracts (title TBA)	TBA
1140 - 1200	Discussion	Speakers and audience
1200 - 1315	<i>Lunch</i>	
Session 11: Novel Therapeutics		
Session Chair: TBA		
1315 - 1335	Novel therapeutics: Clues from model systems	Eliezer Masliah UC San Diego
1335 - 1355	Novel therapeutics: Human trials and next steps	Jim Leverenz Cleveland Clinic
1355 - 1410	Presentation selected from submitted abstracts (title TBA)	TBA
1410 - 1425	Presentation selected from submitted abstracts (title TBA)	TBA
1425 - 1440	Presentation selected from submitted abstracts (title TBA)	TBA
1440 - 1500	Discussion	Speakers and audience
1500 - 1530	<i>Break</i>	
Session 12: Working Groups or Recreation/Leisure Time		
1530 - 1700	Pathology/Genetics/Biofluid/Basic Science and Consortium Working Groups	Working group staff
1530 - 1700	Recreation/Leisure Time	All other conference participants
1700 - 1830	Poster Session	All conference participants
Friday, December 4 – Day 4 Hot Topics/Controversies/Harmonization		
Time	Event/Title	Speaker/Participants
0700 - 0730	Breakfast	Participants

Session 13: Hot Topics		
Session Chair: TBA		
0730 - 0745	Presentation selected from submitted abstracts (title TBA)	TBA
0745 - 0800	Presentation selected from submitted abstracts (title TBA)	TBA
0800 - 0815	Presentation selected from submitted abstracts (title TBA)	TBA
0815 - 0830	Presentation selected from submitted abstracts (title TBA)	TBA
0830 - 0900	<i>Break</i>	
Session 14: Controversies		
Session Chair: Dan Weintraub, University of Pennsylvania		
0900 - 0915	Maintain the 1 year rule in PD/PDD and DLB: <i>Yes</i>	David Burn Newcastle University
0915 - 0930	Maintain the 1 year rule in PD/PDD and DLB: <i>No</i>	Ron Postuma McGill University
0930 - 0945	Discussion	Speakers and audience
0945 - 1000	Should antipsychotics be used in DLB? <i>Yes</i>	Clive Ballard King's College London
1000 - 1015	Should antipsychotics be used in DLB? <i>No</i>	Dan Weintraub University of Pennsylvania
1015 - 1030	Discussion	Speakers and audience
1030 - 1100	<i>Break</i>	
Session 15: Toward Global DLB Research Harmonization		
Session Chair: TBA		
1100 - 1120	DLB research in North America	Tom Montine University of Washington
1120 - 1140	DLB research in Europe	Dag Aarsland Karolinska Institutet
1140 - 1200	DLB research in Asia	Hiroshige Fujishiro Juntendo University
1200 - 1220	Insights from the NACC for DLB Research	Walter Kukull University of Washington
1220 - 1245	Discussion	Speakers and audience
1245 - 1330	<i>Lunch</i>	
Session 16: Working Groups or Leisure Time/Farewell		
1330 - 1600	All Working Group Discussion	Working group staff
1330 -	Leisure time/farewell	All other conference participants