

OLYMPUS

EVIS EXERA III

EVIS EXERA III DUODENOVideoscope

TJF-Q190V

Supporting Your Standard of Care



TJF-Q190V DUODENOVideoscope

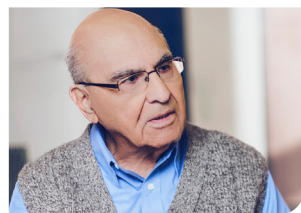
Supporting Your Standard of Care



ERCP Solutions That Allow You to Focus on **Your Patient**

Endoscopic retrograde cholangiopancreatography (ERCP) procedures are highly challenging for all parties involved: **gastroenterologists, nurse managers, reprocessing technicians, and hospital administrators**. Most of all, it is a difficult time for your **patient**, both physically and mentally.

Leading up to the ERCP procedure, your patient and their family have already been through a long and taxing medical journey. There is a lot of uncertainty about what lies ahead, and they are counting on your team to help them through this process. The technical aspects of the procedure aren't necessarily top-of-mind for your patients in these moments. Rather, their questions are likely to be:



“Will this procedure be painful?”
“Will I get the answers I am looking for?”
“Will you be able to help me get better?”
“What is my prognosis?”

The next generation of Olympus duodenovideoscope, combined with our unique guidewire and sphincterotome technologies, is designed to provide a comprehensive solution to nearly all ERCP access procedures.

Helping **Gastroenterologists** Provide Quality Care

When performing an ERCP, you need tools and technologies that you can trust so you can focus on taking care of your patients. The Olympus TJF-Q190V duodenovideoscope has **maneuverability and imaging capabilities** to help you serve your patients and get the answers they need. With proven ERCP solutions, you can rest assured that you have the complete tool set you need to provide the care your patients deserve.

Our **high quality imaging** delivers sharp, clear images for easy viewing and observation during the procedure.

The new TJF-Q190V utilizes a **square image shape and 15° backward viewing**, allowing for expanded vertical field of view and improving cannulation efficiency. You can continue to rely on dual guidewire locking system at the distal end, enabling locking of 0.035 inch and 0.025 inch guidewires.



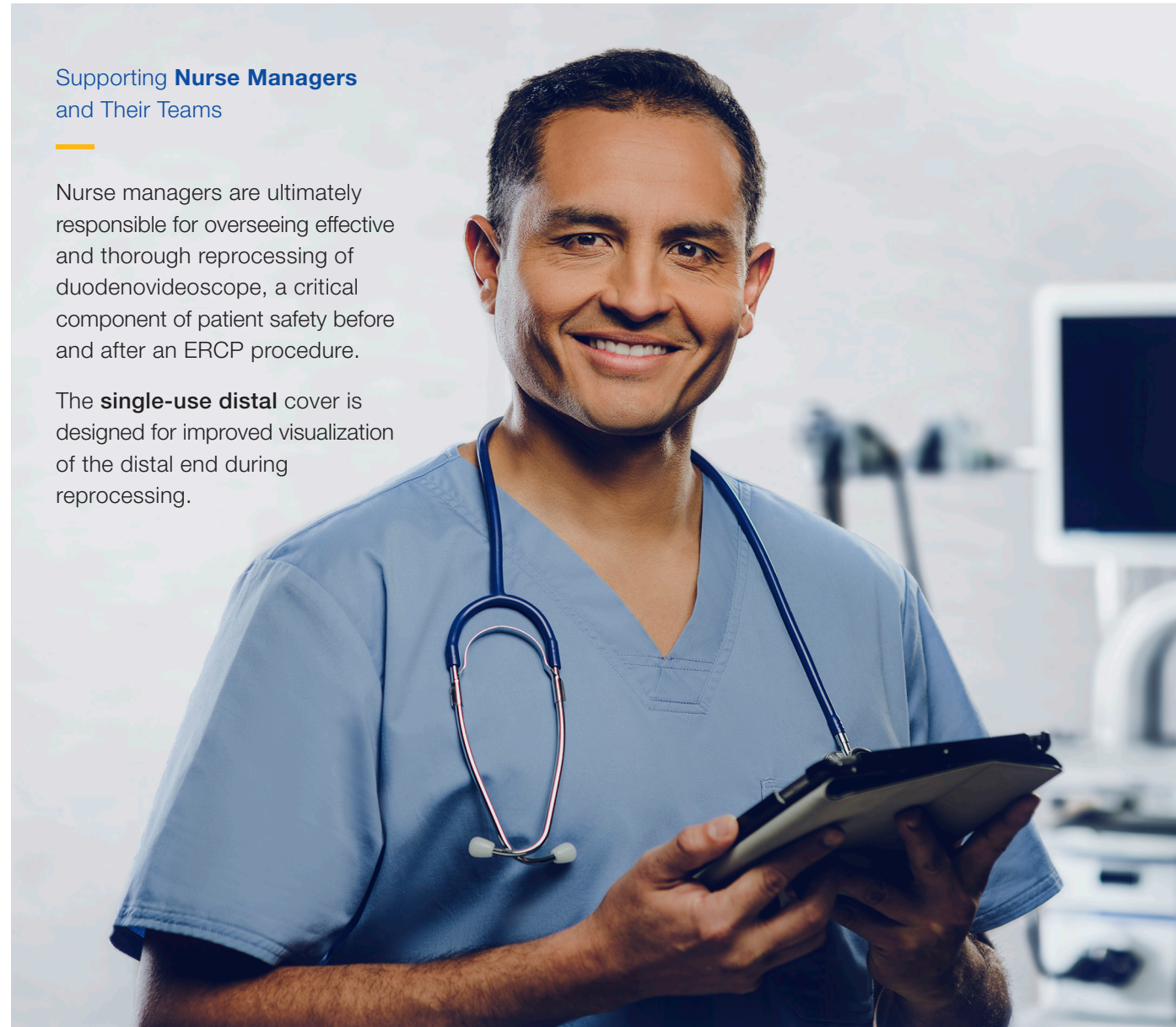
TJF-Q190V DUODENOVideoscope

Supporting Your Standard of Care

Supporting **Nurse Managers** and Their Teams

Nurse managers are ultimately responsible for overseeing effective and thorough reprocessing of duodenovideoscope, a critical component of patient safety before and after an ERCP procedure.

The **single-use distal** cover is designed for improved visualization of the distal end during reprocessing.

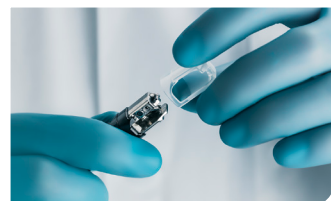


Providing **Hospital Administrators** Safe & Effective Tools

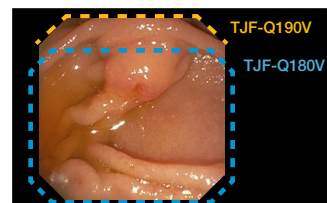
The Olympus TJF-Q190V duodenovideoscope provides the latest advancements in ERCP technology to satisfy your physicians, as well as a design meant to provide efficient reprocessing to meet the needs of your nurse managers.

You can rely on **Olympus field service and clinical support** to ensure that you team is well prepared, supported, and has all of the tools they need for success.

Our Newest Duodenovideoscope Offers the Following Features:



Single-use distal cover for improved visualization of the distal end during the reprocessing procedure.



Expanded field of view with a square display.

- Extended view area of TJF-Q190V
- View area of TJF-Q180V



Guidewire locking capability to facilitate 0.035 inch and 0.025 inch short guidewire locking.



High-quality imaging capabilities for viewing and observation.

TJF-Q190V DUODENOVideoscope

Features and Benefits

Single-use Distal Cover

Allows for improved visualization of the distal end for the reprocessing procedure.

Guidewire Locking

Facilitate short guidewire locking with dual system at the distal end.

Improved Cannulation Efficiency

Square image shape and 15° backward viewing allow for expanded vertical field of view

Distal-end Flushing Adaptor

Designed for directed flushing during manual cleaning.

Waterproof One-touch Connector

190-series scopes allow a one-step connection to the video system.

High Force Transmission (HFT)

HFT, the scope handling technology designed to improve scope responsiveness and ergonomics in 190-series colonoscopes, is now incorporated into the TJF-Q190V.

Narrow Band Imaging (NBI)

NBI with the EVIS EXERA III system is significantly brighter than with the EVIS EXERA II System.

Overall Image Quality

The EVIS EXERA III System and endoscopes provide superior image quality to EVIS EXERA II System and endoscopes.



EVIS EXERA III DUODENOVideoscope OLYMPUS TJF-Q190V

TJF-Q190V DUODENOVideoscope

Supporting Your Standard of Care

Olympus takes our role in enhancing patient safety very seriously. We are continuously seeking to improve the next generation of our products, provide guidance on their safe and effective use and increase the ease and efficacy of endoscope reprocessing.

Our ultimate goal is not to control infections potentially associated with endoscopy but to prevent them.



Providing **Technicians** with Access

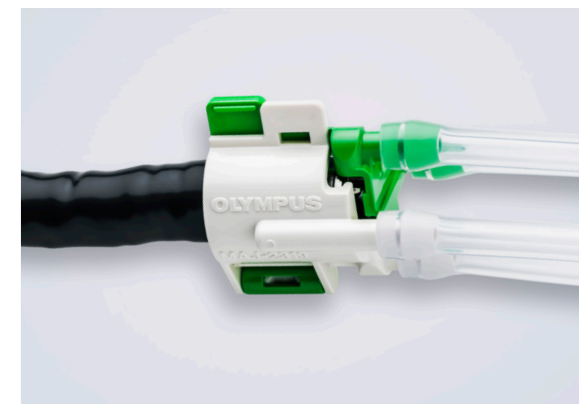
Reprocessing technicians are charged with a critical responsibility: reprocessing duodenoscopes for ERCP procedures. Patients face potential risks with any medical procedure, which may add to their stress. Technicians want to do what they can to reduce these concerns, including working to avoid potential infections associated with ERCP.

The Olympus TJF-Q190V has features that are **designed with Technicians in mind**.



Single-use Distal Cover

Designed to provide access for brushing and flushing.



Distal-end Flushing Adapter

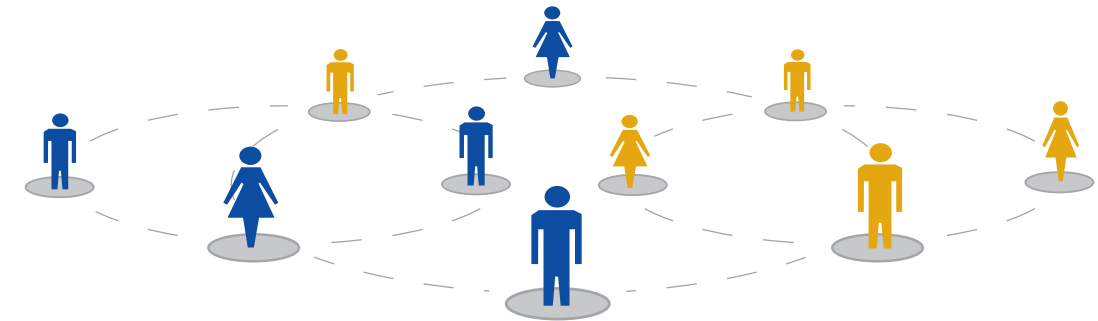
Designed to direct flushing during manual cleaning.



Olympus Services

Dedicated Support Beyond Products

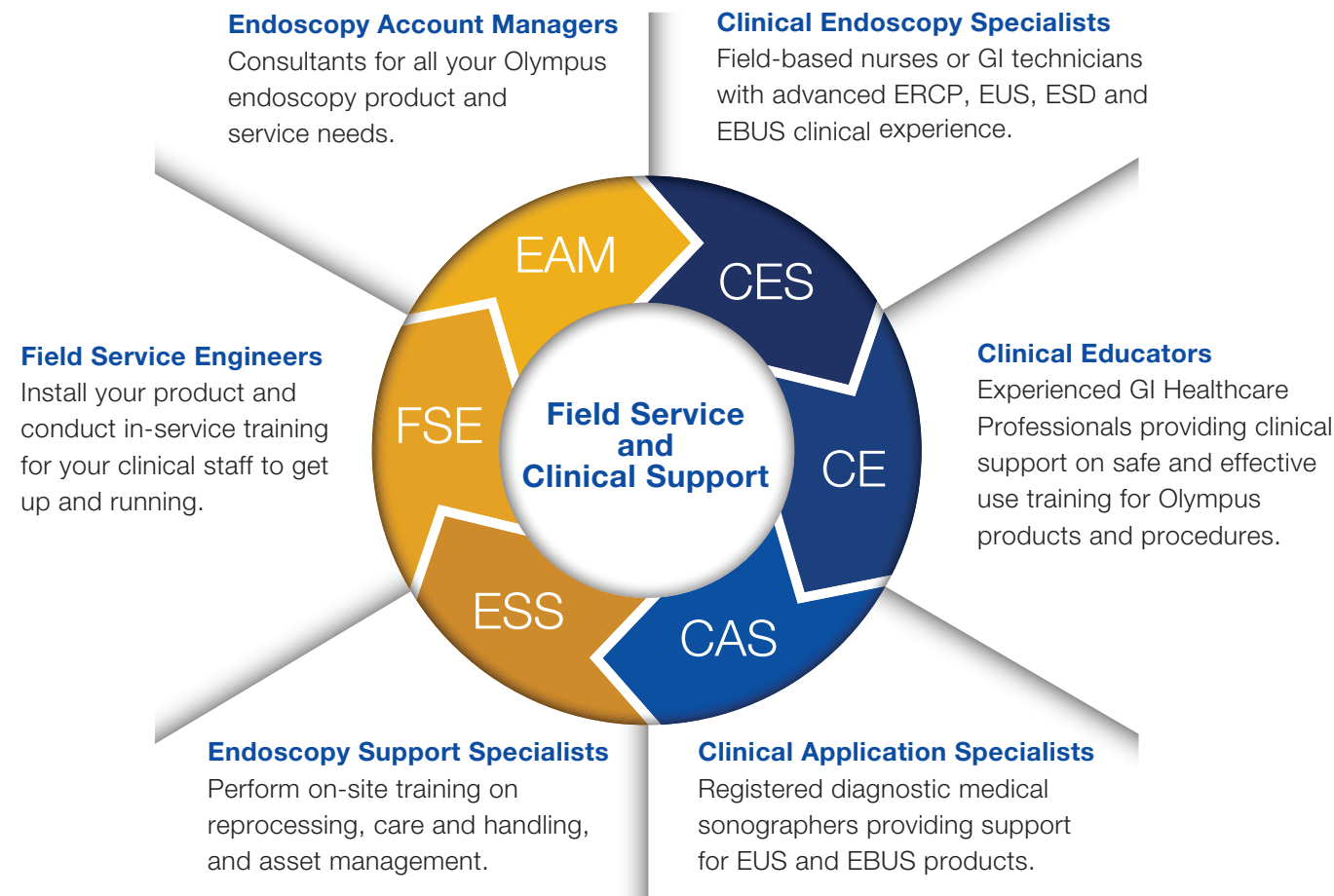
At Olympus, we strive to be more than just a medical equipment provider to our customers. We provide end-to-end support, from the purchasing process to the procedure and reprocessing services, to build a relationship of trust. Your success with our products means that you may focus on patient care, and we want to do everything we can to help you achieve your goals.



Field Service and Clinical Support

Phone: 800-848-9024

Olympus offers support over the phone and web, as well as on-site support services, to ensure that your team is well-prepared and has all of the tools they need for success.



Olympus Customer Service

Phone: 800-848-9024

Olympus Technical Assistance Center

Phone: 800-848-9024, ext 1

Specialists are available Monday-Friday 7am to 8pm EST to respond to calls and assist you in diagnosing and troubleshooting your entire range of Olympus products.

OlympusConnect.com

Web: olympusconnect.com

OlympusConnect.com is a web portal for Olympus customers to access corporate intelligence in order to improve business and clinical operations. This password-protected site contains a vast amount of resources including case studies, product catalogs and business-building marketing materials.

Financing Options

Phone: 484-896-7993

Web: medical.olympusamerica.com/customer-resources/financing. For more than 20 years, Olympus has been providing lease financing programs that are affordable, flexible and customized for our healthcare technology users.

Service Agreements

Phone: 800-401-1075

Email: service.contracts@olympus.com

Olympus provides comprehensive coverage for all endoscope repairs, whether caused by daily use or accidental damage. Our 24/7 technical support provides on-site options to meet your facility's needs.

Reimbursement Guidelines Hotline

Phone: 866-794-4331

Email: olympusreimbursement@reimbursementiq.com

Olympus has a full collection of reimbursement materials to help healthcare providers be more informed and to make better economic decisions. Coding experts are available to help answer your reimbursement questions.

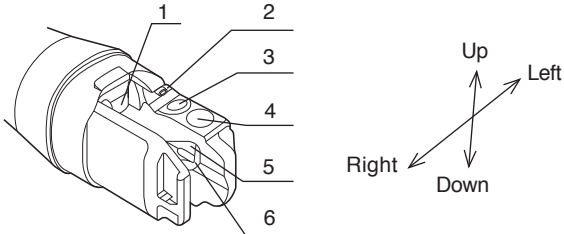
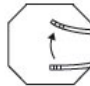
Olympus University and Professional Education

Phone: 800-231-0016

Web: olympusuniversity.com

Product training and education programs provide safe and effective product use training on Olympus equipment and devices to healthcare professionals (HCPs), particularly physicians and nurses.

TJF-Q190V

Product Specifications		
Optical System	Field of view	100°
	Direction of view	Backward side viewing 15°
	Depth of field	5 to 60 mm
Insertion Section	Distal end enlarged 1. Instrument channel outlet 2. Air/water nozzle 3. Objective lens 4. Light guide lens 5. Forceps elevator 6. Guidewire-locking groove	
	Insertion tube outer diameter	11.3 mm
	Distal end outer diameter	13.5 mm
	Working length	1240 mm
Instrument Channel	Channel inner diameter	4.2 mm
	Minimum visible distance	10 mm
	Direction from which EndoTherapy accessories enter and exit the endoscopic image	
Bending Section	Angulation range	Up 120° Down 90° Right 110° Left 90°
Total Length		1560 mm
Compatible EVIS EXERA System	Video system center Xenon light source	EVIS EXERA III CV-190 EVIS EXERA III CLV-190

Ordering Information			
Order Number	Description	Units	Quantity
TJF-Q190V	190-series Duodenovideoscope	EA	1 PC
MAJ-2315	Single-use Distal Cover	CAS	20 PC
MAJ-2319	Distal-end Flushing Adapter	EA	1 PC



Olympus is a registered trademark of Olympus Corporation, Olympus America Inc., and/or their affiliates. | Medical devices listed may not be available for sale in all countries.

OLYMPUS

OLYMPUS AMERICA INC.
3500 Corporate Parkway, PO BOX 610, Center Valley, PA 18034

For more information, contact your Olympus sales representative, or call 800-848-9024.
www.medical.olympusamerica.com

©2020 Olympus America Inc. All rights reserved.
Printed in USA OAIGI0220BRO33929