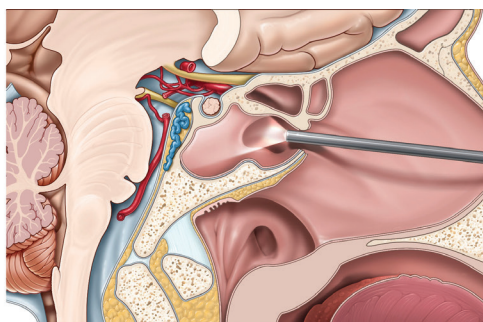
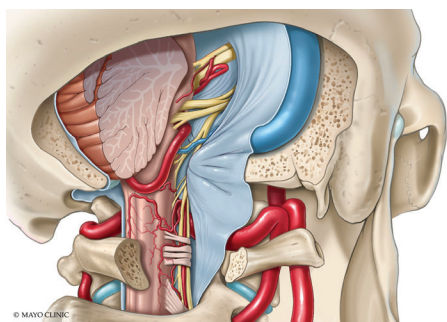




School of Continuous  
Professional Development

# Surgical expertise



## Open & Endoscopic Techniques in Cranial Base Surgery

**JUNE 1-4, 2022**

**Stabile Building Mayo Clinic  
Rochester, Minnesota**



**38.50**  
**AMA PRA**  
**Category 1**  
**Credit™**

[ce.mayo.edu/oecbsurg](https://ce.mayo.edu/oecbsurg)



Registration  
is now open!

# About the course

## COURSE HIGHLIGHTS

The objective of this course is to offer a comprehensive review, and hands-on training in skull base open and endoscopic techniques. Laboratory dissection will be combined with 3D anatomical projections, case discussions, and virtual reality to offer a comprehensive 360° review and update around surgical treatment of skull base pathologies.

## TARGET AUDIENCE

This course is designed for Medical Professional Neurosurgeons and Otolaryngologists who have an interest in skull base techniques.

## LEARNING OBJECTIVES

Upon conclusion of this program, participants should be able to:

- Identify the relevant anatomy related to cranial base approaches and pathologies
- Review the indications of the different cranial base approaches
- Describe the steps necessary to perform open and endoscopic endonasal cranial base approaches, and review the exposure obtained

## COURSE DIRECTORS

**Maria Peris-Celda , MD PhD, Neurosurgery**

## COURSE CO-DIRECTORS

**Michael J. Link, MD, Neurosurgery**

**Matthew L. Carlson, MD, Otology**

**Carlos D. Pinheiro-Neto, MD PhD, Rhinology**

**Garret W. Choby, MD, Rhinology**

**Kathryn Van Abel, MD, Head, neck surgery**

## COURSE FACULTY

**Jamie J. Van Gompel, MD, Neurosurgery**

**Colin L. Driscoll, MD, Otology**

**Brian A. Neff, MD, Otology**

**Erin K. O'Brien, MD, Rhinology**

**Janalee K. Stokken, MD, Rhinology**

**Jonathan M. Morris, MD, Neuroradiology**

**Luciano C.P.C. Leonel, PhD, Neuroanatomy**

## ONLINE REGISTRATION

[ce.mayo.edu/oecbsurg](https://ce.mayo.edu/oecbsurg)

**For additional information email**

Hunter Prouty at:

[Prouty.Hunter@Mayo.edu](mailto:Prouty.Hunter@Mayo.edu)



## PROGRAM AT-A-GLANCE

### Module 1 - Open Approaches

#### WEDNESDAY, JUNE 1

Orbitozygomatic approach **3D VR CM**

Transcavernous **3D VR CM**

Orbitozygomatic approach **D**

Transcavernous **D**

#### ***Lunch and Case Discussion***

Middle fossa, petrosectomy **3D VR CM**

Middle fossa and anterior petrosectomy **D**

#### ***Dinner and Professor Lecture***

#### THURSDAY, JUNE 2

Retrosigmoid approach **3D VR CM**

Presigmoid approaches **3D VR CM**

Posterior petrosal approach **3D VR CM**

Posterior petrosal approach  
(Translabyrinthine, transcochlear **D**)

Retrosigmoid approach, endoscopic  
assistance **D**

#### ***Lunch and Case Discussion***

Far lateral and its extensions **3D VR CM**

Far lateral **D**

#### ***Dinner and Professor Lecture***

### Module 2 - Endoscopic Approaches

#### FRIDAY, JUNE 3

Anatomy of the nose **3D VR CM**

Transsellar and transcavernous **3D VR CM**

Skull base reconstruction **3D VR CM**

Transsellar and nasoseptal flap harvest **D**

Transcavernous approach **D**

#### ***Lunch and Case Discussion***

Transpterygoid, Meckel's cave **3D VR CM**

Transpterygoid, Meckel's cave **D** dissection

#### ***Dinner and Professor Lecture***

#### SATURDAY, JUNE 4

Anterior cranial base, medial orbit **3D VR CM**

Transclival, far medial **3D VR CM**

Infratemporal fossa **3D VR CM**

#### ***Lunch and Case Discussion***

Transclival **D**

Far medial **D**

Transmaxillary, infratemporal fossa **D**

#### ***Dinner and Professor Lecture***

**3D** = TRIDIMENSIONAL

**VR** = VIRTUAL REALITY

**CM** = CASE DISCUSSION AND MANAGEMENT

**D** = DISSECTION

Program schedule subject to changes



Full course*	June 1-4
Credits	38.50
Practicing Physicians	\$2700
Senior resident or Fellow	\$2200

Module 1 Open Approaches*	June 1-2
Credits	18.00
Practicing Physicians	\$1700
Senior resident or Fellow	\$1400

Module 2 Endoscopic Approaches*	June 3-4
Credits	18.00
Practicing Physicians	\$1700
Senior resident or Fellow	\$1400

\*Includes anatomical dissection, lectures, course materials and all course-related meals and social events

10 Stations with a maximum number of participants of 20

1 specimen per 2 participants

For inquiries related to the course please email [Prouty.Hunter@Mayo.edu](mailto:Prouty.Hunter@Mayo.edu)

## LODGING & ACCOMMODATIONS

For those seeking accommodations, some recommendations include but are not limited to:

### Hilton Rochester

10 East Center St.  
507-258-5757

### Hilton Garden Inn

225 South Broadway  
507-285-1234

### DoubleTree Hotel

150 South Broadway  
507-281-8000

There are room blocks with discounted rates at the hotels listed.

Inquire with hotels about a possible Mayo Clinic business rate.

## CREDITS



JOINT ACCREDITATION  
INTERPROFESSIONAL CONTINUING EDUCATION

### AMA

In support of improving patient care, Mayo Clinic College of Medicine and Science is jointly accredited by the Accreditation Council for Continuing Medical Education (ACME), the Accreditation Council for Pharmacy Education (ACPE), and the American Nurses Credentialing Center (ANCC) to provide continuing education for the healthcare team.

Mayo Clinic College of Medicine and Science designates this live activity for a maximum of **38.50 AMA PRA Category 1 Credits™**.

### Other Healthcare Professionals

A certificate of attendance will be provided to other healthcare professionals for requesting credits in accordance with state nursing boards, specialty societies, or other professional associations.

Special Thanks to our Equipment Sponsors:

