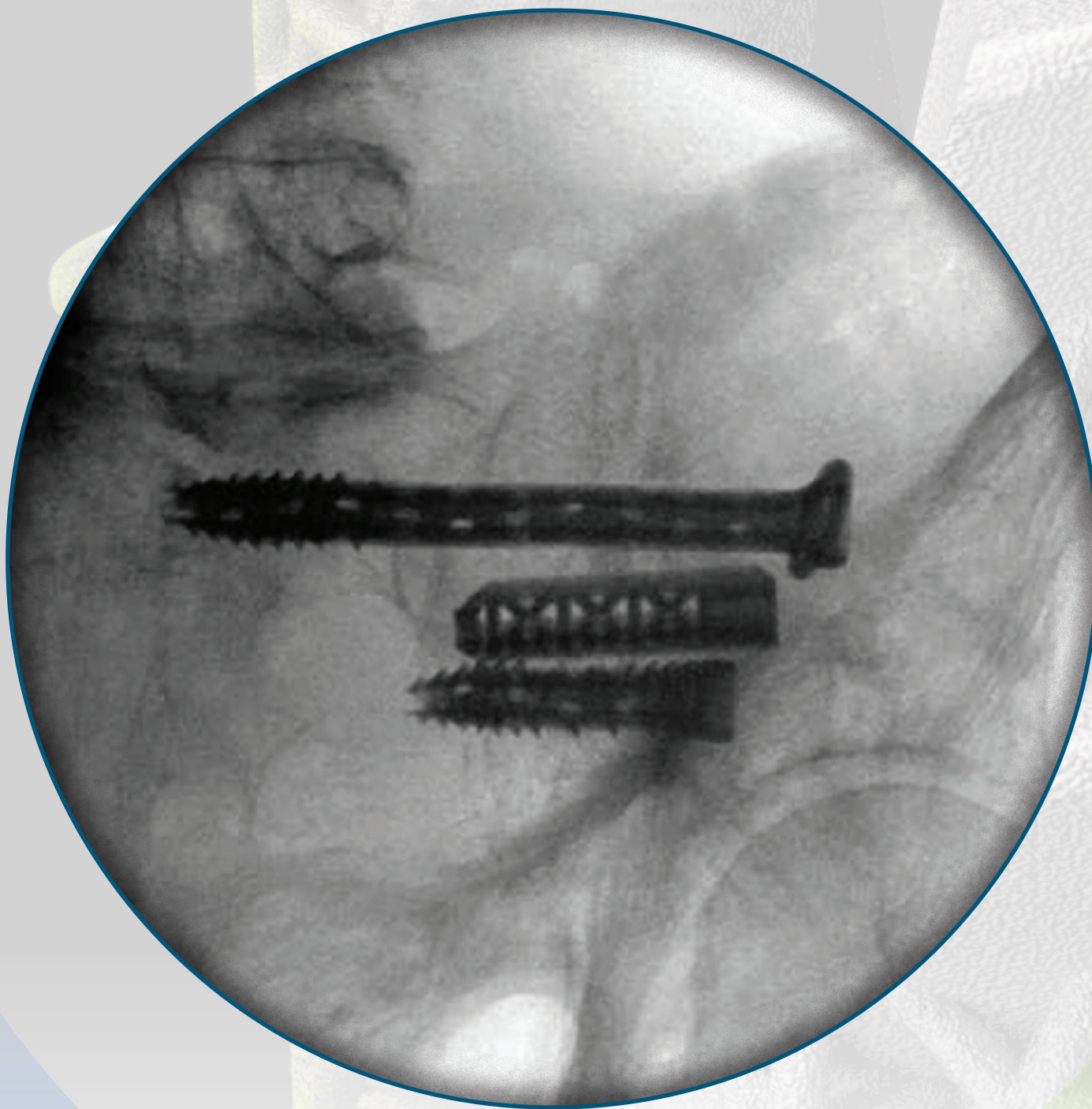


## Cutting-Edge

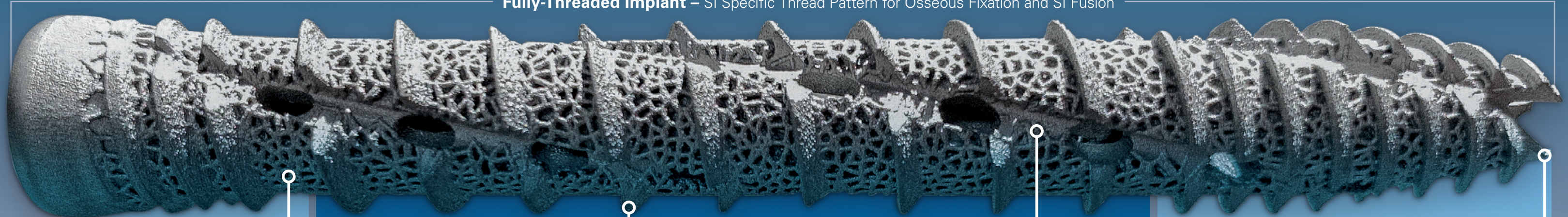
Pelvic Fixation & Fusion™



# Cutting-Edge Pelvic Fixation & Fusion™

iFuse-TORQ™ 3D printed implants are designed with cutting-edge features to optimize system performance in pelvic fracture repair and sacroiliac joint fusion surgery.

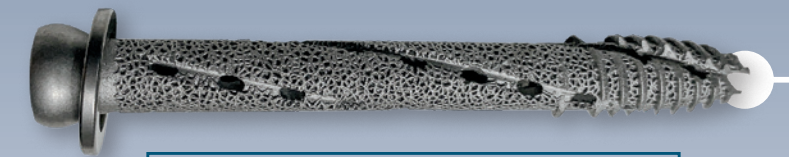
Fully-Threaded Implant – SI Specific Thread Pattern for Osseous Fixation and SI Fusion



FIXATION

FUSION

FIXATION



**Lag Implant**  
Partial Thread Pattern & Washer  
Provides compression<sup>2</sup>

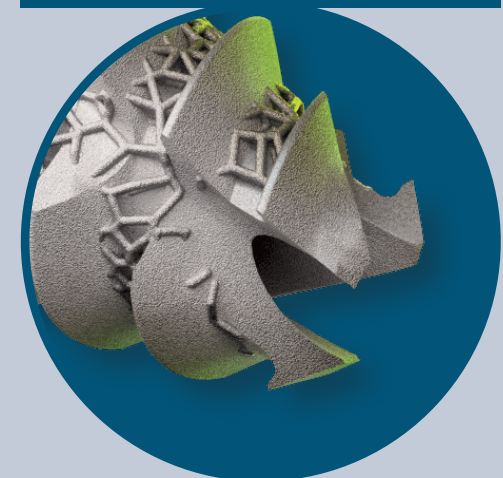
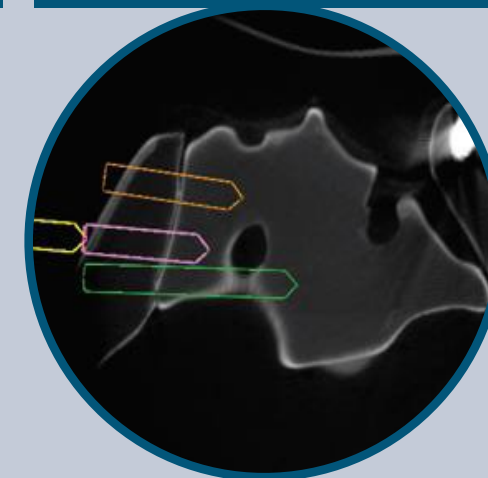
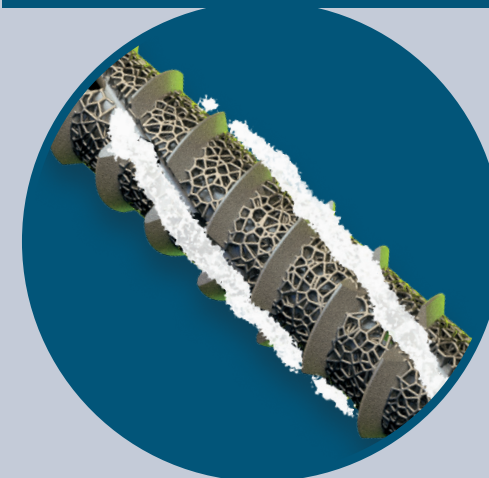
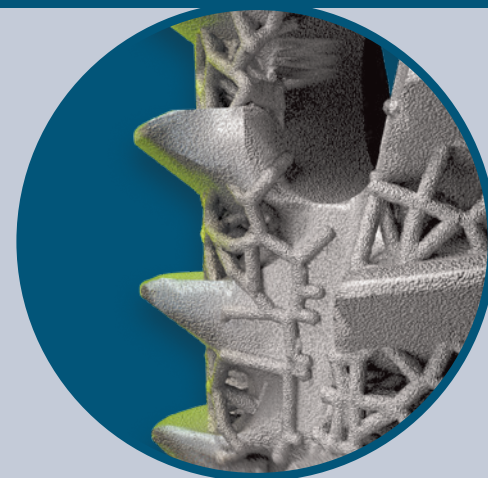
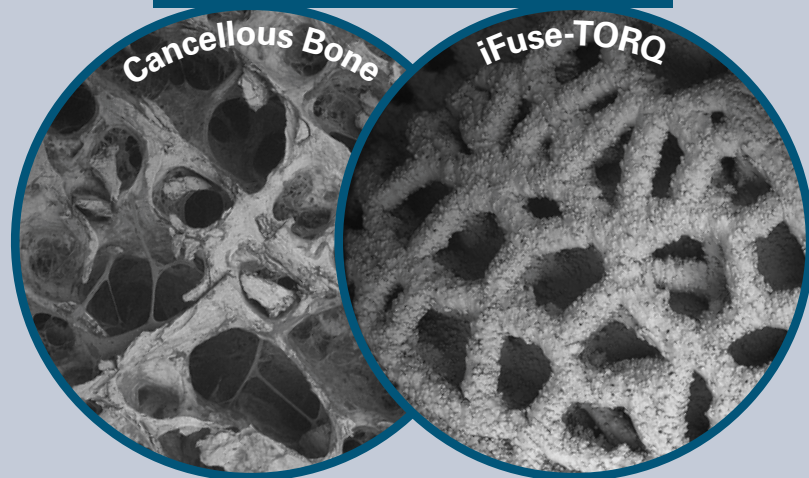
**FuSlon 3D™ Surface**  
3D Printed Porous Lattice  
Mimics cancellous bone<sup>1</sup>

**TORQLock™ Threads**  
Hooked Profile  
Designed to reduced toggle

**IntelliHarvest™ Technology**  
Helical Flutes and Fenestrations  
Self-harvest bone

**iFuse-TORQ™ NAV**  
Minimally Invasive Surgery  
Navigation compatible

**EZDrive™ Tip**  
Self-Drilling, Self-Tapping  
Decreases surgical steps





Specifications (in mm)			
Diameter	10.0	11.5	13.5
Length	40/35-90	40/35-90	35-90
Part Numbers			
Implant	100XXLG / 100XXT	115XXLG / 115XXT	135XXT

#### References

1. SI-BONE 300857-R
2. SI-BONE 300929-TS

#### Indications

The iFuse-TORQ™ Implant System is indicated for:

- Fusion of the sacroiliac joint for sacroiliac joint dysfunction including sacroiliac joint disruption and degenerative sacroiliitis.
- Fracture fixation of small and large bones of the pelvis.

Refer to the Instructions For Use, for contraindications, warnings and precautions.

There are potential risks associated with the iFuse-TORQ Implant System. It may not be appropriate for all patients and all patients may not benefit. For information about the risks, visit [www.si-bone.com/label](http://www.si-bone.com/label)

SI-BONE and iFuse Implant System are registered trademarks of SI-BONE, Inc. iFuse-TORQ, TORQLock, IntelliHarvest, and FuSion 3D are trademarks of SI-BONE, Inc. ©2021 SI-BONE, Inc. All other trademarks referenced herein are the property of their respective owners. All rights reserved. Patents [www.si-bone.com](http://www.si-bone.com)

**Rx ONLY**



US	Providers	10902.030421
----	-----------	--------------

[si-bone.com](http://si-bone.com)



#### SI-BONE, Inc.

471 El Camino Real,  
Suite 101  
Santa Clara, CA 95050  
USA

t 408.207.0700  
f 408.557.8312  
info@SI-BONE.com  
www.SI-BONE.com