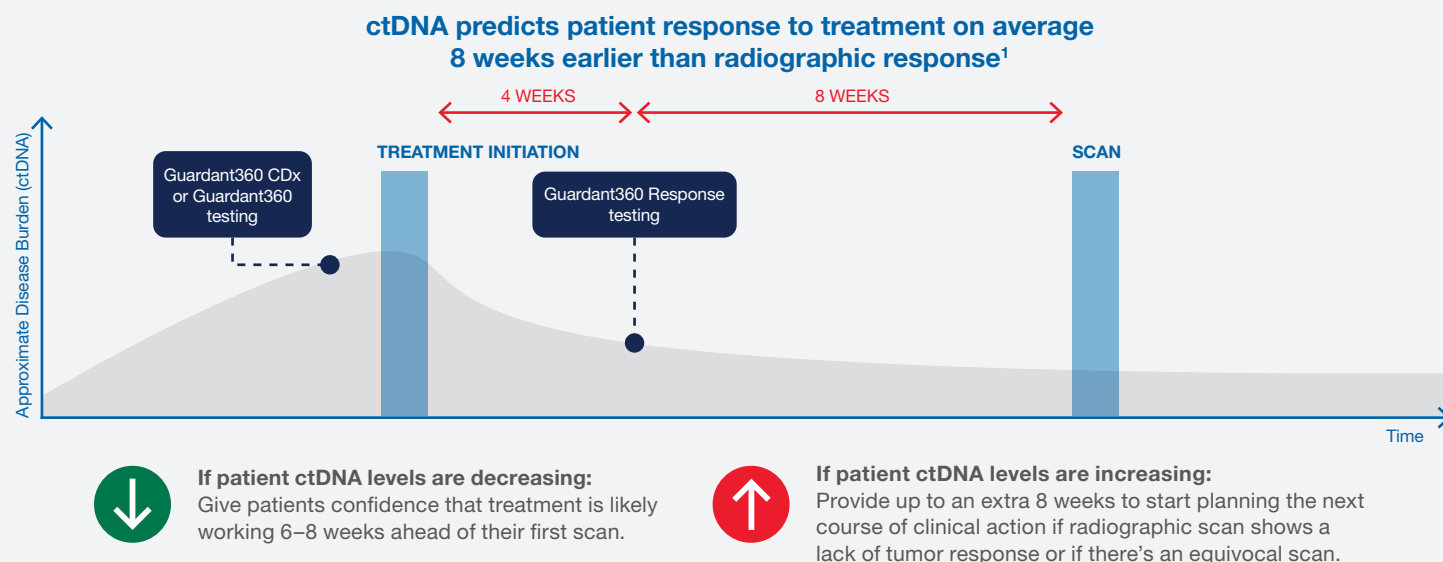


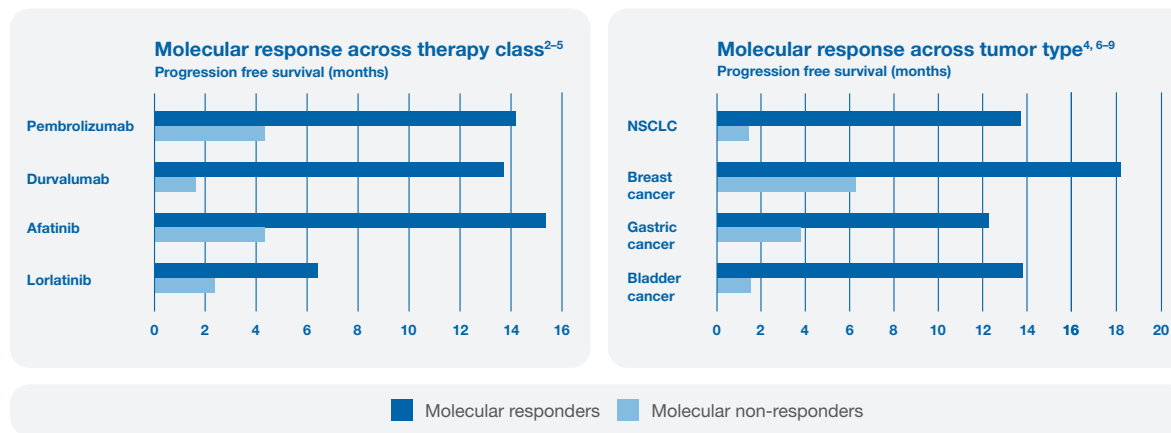
## Get an earlier view of your patient's response to immunotherapy or targeted therapy weeks before their first scan

Guardant360 Response™ uses circulating tumor DNA (ctDNA) from liquid biopsy to predict response to treatment for patients with advanced cancer.<sup>1</sup>



## PFS is significantly longer in molecular responders\* across immunotherapy and targeted therapy classes and cancer types<sup>1–9</sup>

Patients with decreasing ctDNA levels during treatment are more likely responding to current therapy and have a 3–6 times longer PFS than those who do not show decreasing ctDNA levels.



### 40+ publications

Demonstrating the benefits of the Guardant360® platform in assessing treatment response

**Decreasing ctDNA corresponds to a 3–6 times longer PFS**

\*Molecular responder is defined as a patient that has a ctDNA decrease of 50% or more post treatment initiation.

**When ordering Guardant360 CDx or Guardant360 testing, Guardant360 Response can be added to assess treatment response as early as 4 weeks after treatment initiation**

## Easy ordering for a fast method of assessing response to immunotherapy or targeted therapy

1

On the test requisition, select Liquid Profiling or Liquid to Tissue Profiling and add Guardant360 Response for a baseline timepoint.

2

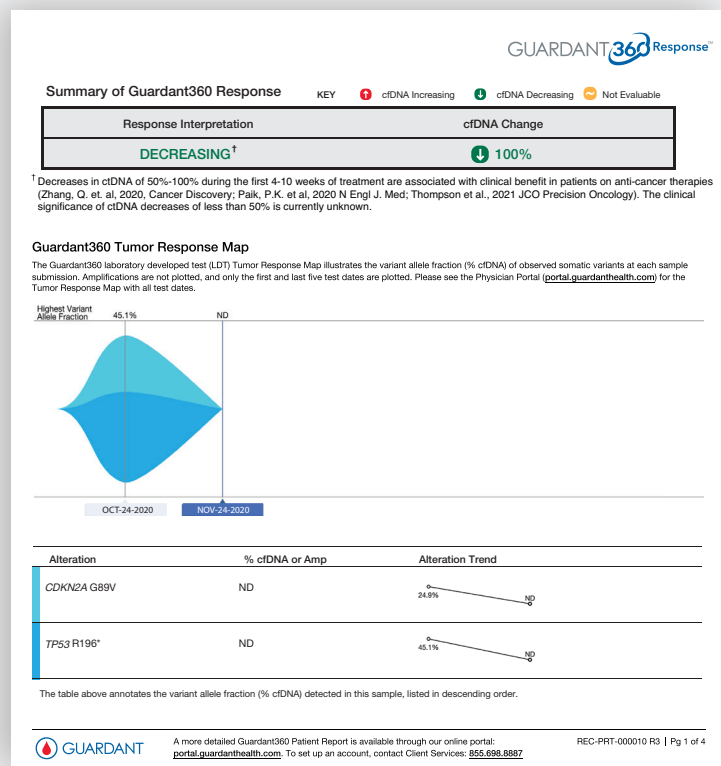
Results from your Guardant360 CDx or Guardant360 test will be returned in 7 days.

3

14 days after results are returned, Guardant Health Client Services will coordinate with your support staff to obtain a second blood draw to measure response 4-10 weeks after treatment initiation.

4

Results from your Guardant360 Response test will be returned in 7 days.



## Comprehensive and on-demand medical support



Live and on-demand access to discuss results



Review the latest publications



Request case reviews of treatment response

Schedule a meeting with Medical Affairs to learn how to integrate Guardant360 Response into your practice: [Medicalaffairs@guardanthealth.com](mailto:Medicalaffairs@guardanthealth.com)

### References:

1. Zhang, Q. et al. *Cancer Discovery*. 2020; 10(12): 1775-1775. 2. Ma, CX. et al. *Clin Cancer Res*. 2017; 23(19): 5659-5659. 3. McCoach, CE. et al. *Clin Cancer Res*. 2018; 24(12): 2758-2770. 4. Thompson JC, et al. *JCO Prec Oncol*. 2021; 5:510-524. 5. Martinez-Sáez O, et al. *Ann of Oncol*. 2020; 31(17). 6. Wang C, et al. *The Oncol*. 2020; (8):e1188-e1194. 7. Shaw, AT et al. *Clin Oncol*. 2019; 37(15): 9019-9019. 8. Kim, ST, et al. *Nat Med*. 2018; 24: 1449-1458. 9. Raja R, et al. *Clin Cancer Res*. 2018; 24(24): 6105-6105.

**Disclaimer:** This content has not been reviewed by the FDA. For the complete intended use statement including companion diagnostic indications, please see the Guardant360 CDx Technical Information: [Guardant360CDx.com/technicalinfo](https://Guardant360CDx.com/technicalinfo).

Client Services: 1.855.698.8887 • [clientservices@guardanthealth.com](mailto:clientservices@guardanthealth.com) • [Guardant360CDx.com](https://Guardant360CDx.com)  
REC-MKT-000115 R1