

NELLA[®]

It's Time For Nella.
What Women
~~Want~~ Need.



NELLA[®]
NUSPEC[®]

Reusable Vaginal Speculum

Finally, A Comfortable Reusable Speculum



- Narrow bills optimize patient comfort
- Improved visibility with integrated sidewall retractors
- Temperature neutral—no need to warm
- Quiet operation keeps patients at ease
- Smooth—no lubricant required
- Strong, autoclavable polymer

99%

of women prefer the NuSpec
over a metal speculum¹

Full Visibility with the Comfort of a Tampon



(Patient: 41 y.o., BMI 30, g2p2)
NuSpec bill size approximately the same as a regular tampon.

Patient and Provider Preferred.

- **Improved cervical visibility²** for patients with sidewall laxity
- **Minimized anxiety and discomfort²** for all patients, especially first-time or sensitive patients, peri and postmenopausal women, and cancer patients
- **Withstands twice as much force as a metal speculum³** without permanent damage
- **Non-conductive material** means NuSpec can be used during both general exams or LEEP procedures
- Using Reusable Specula Instead of Disposables **Can Reduce Carbon Emissions by up to 75%⁴**

Use NuSpec for:

General gynecology exams
LEEP
Colposcopy
Hysteroscopy
Biopsies
IUD insertion & removal
Other in-office procedures

Provider Needs

	NuSpec	Metal
Sidewall retention	✓	✗
Easy adjustment in use	✓	✗
Ergonomic handle	✓	✗
One-handed locking	✓	✗
No disassembly required	✓	✗

Patient Needs

	NuSpec	Metal
Smaller bill size	✓	✗
Quiet operation	✓	✗
Neutral temperature	✓	✗
Smooth material (no lubricant required)	✓	✗

¹ Ceek Women's Health (2020). *NuSpec Consumer Preference Study*. Internal Report.

² Ceek Women's Health (2017). *VIOLET Clinical Trial*. ClinicalTrials.gov Identifier: NCT03123367. Internal Report.

³ Ceek Women's Health (2020). *NuSpec Strength Comparison Verification*. Internal Report.

⁴ Bell, S.G., Donahue, L.M., Hilton, S., Keolian, G.A., Williams, B.C. (2020). *Comparative Carbon Footprint Analysis of Disposable and Reusable Vaginal Specula*. AJOG, Feb. 14, 2020, DOI: <https://doi.org/10.1016/j.ajog.2020.02.007>

Ordering Information:

- NU010** Nella NuSpec Reusable Vaginal Speculum (Box of 10)
NU001 Nella NuSpec Reusable Vaginal Speculum (Single Speculum)

NELLA[®] VULIGHT[®]

Single-Use LED Illuminator

The Powerful, Portable Exam Light



- Shadow-free illumination for clinic or hospital use
- Pocket-sized solution for inadequate lighting
- Fits NuSpec and most common specula, metal or plastic
- Rotates along top bill – easily accommodates tools
- Reduced risk of cross contamination compared to gooseneck light

44% Brighter

Nella VuLight shown to have 44% higher lux than a gooseneck exam light¹



Consistent, Shadow-free Illumination Every Time



Targeted Illumination
 Nella VuLight
 Single Use LED Light
 avg. lux near cervix: 6,575



Traditional Illumination
 Welch Allyn 48810
 Exam Light
 avg. lux near cervix: 2,248

- **Brighter illumination** compared to standard gooseneck light¹
- **Close to cervix** placement provides direct illumination even in patients with difficult anatomy, excess tissue or first-time patients
- **Securely repositions** along top bill to accommodate tools during procedures

Use VuLight for:

General gynecology exams
 LEEP procedures
 Biopsies
 IUD insertions/removals
 Brachytherapy
 Other in-office procedures
 Emergency Department



Provider Needs

Provider Needs	VuLight	Gooseneck exam light
Focused cervical illumination ¹	✓	✗
Higher lux (brightness) ¹	✓	✗
Shadow-free ¹	✓	✗
No risk of cross-contamination	✓	✗
No need to reposition external light source	✓	✗
Portable solution	✓	✗
No provider contortion necessary	✓	✗

¹ Ceek Women's Health (2020). VuLight Comparison Verification. Internal Report.

Ordering Information:

VL050 Nella VuLight Single-Use
 LED Illuminator (Box of 50)



NELLA®
VUSLEEVE®

Single-Use Tissue Retraction Sheath

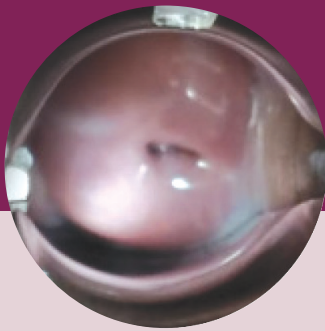
The Only Sleeve for Safety and Visibility



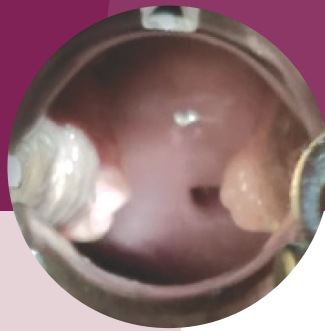
- Retracts vaginal sidewalls, improving quality of care for any exam or procedure
- Protects vaginal sidewall tissue during electrosurgical procedures
- Retains excess tissue for otherwise difficult in-office colposcopy and hysteroscopy
- Increases patient comfort¹ and reduces need for a wider speculum

In **80%**
of exams, VuSleeve helped
providers visualize and access the
patient's cervix better than if they
hadn't used it¹

Retracts and Protects Lax or Excess Sidewall Tissue



with VuSleeve¹
sidewall tissue retraction



without VuSleeve¹
sidewall tissue encroachment

- **Improve exams** for all patients, including those with sidewall laxity or excess tissue
- **Latex-free** material insulates patients from a cold speculum
- **Fits most specula**, metal or plastic

Use VuSleeve for:

General gynecology exams
LEEP
Colposcopy
Hysteroscopy
Biopsies
IUD insertion & removal
Other in-office procedures

Provider Needs	Speculum with VuSleeve	Speculum alone
Sidewall retention ¹	✓	✗
Improved visualization & access ¹	✓	✗
Keeps procedures timely	✓	✗

Patient Needs	Speculum with VuSleeve	Speculum alone
Allows for use of smaller speculum	✓	✗
Protects sidewalls during electrosurgical procedures	✓	✗
Reduced risk of pinching	✓	✗

¹ Ceek Women's Health (2017). VIOLET Clinical Trial. ClinicalTrials.gov Identifier: NCT03123367.

Ordering Information:

VS020 Nella VuSleeve Single-Use
Retraction Sheath (Box of 20)



order@ceekwomenshealth.com or call **1-855-559-CEEK**

Product	SKU/PN	Description	UOM	Quantity	Size
Nella VuSleeve	VS020	Single-Use Tissue Retraction Sheath	Box	20	OS
Nella VuLight	VL050	Single-Use LED Illuminator	Box	50	OS
Nella NuSpec	NU010	Reusable Vaginal Speculum with integrated sidewall retractors	Box	10	OS
Nella NuSpec	NU001	Reusable Vaginal Speculum with integrated sidewall retractors	Each	1	OS



reddot winner 2020



Ceek Women's Health is an award-winning women led medical device company creating products for a better pelvic exam by bringing patient needs to the forefront.

ceekwomenshealth.com

2175 NW Raleigh Street, Suite 110 | Portland, OR 97210 USA

#ceekchange