



# AEON™ ENDOSTAPLER

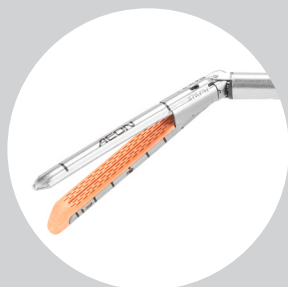
INNOVATING  
MINIMALLY INVASIVE  
SURGERY WITH  
S3 ENGINEERING™



CLINICALLY PROVEN



IN  
HPB SURGERY



Superior staple lines



Smooth articulation



Multi-speed gear

# AEON™ WITH S3 ENGINEERING™

Superior staple lines. Smooth articulation. Multi-speed gear.

## 50%

lower firing force with **multi-speed gear**<sup>1</sup>  
for better staple formation and **superior hemostasis**<sup>2,3</sup>



### Smooth articulation

Precise stapler positioning with fluid range of motion



### Multi-speed gear

Reduced trigger pull force for thicker tissue

### Advanced reload architecture

Integrated I-beam assembly, fixed anvil and teardrop shape anvil buckets

### Proprietary tip design

Broadest range of anvil tips to address a wide range of clinical applications

### High tech manufacturing

Proprietary manufacturing equipment incorporating AI



## WIDEST RANGE OF ANVILS



Regular tip



Short tip



Curved tip

# Surgeon Testimonial



## Prof Aali Sheen, M.D., FRCS

Consultant General and Hepatopancreatobiliary Surgeon, Manchester Royal Infirmary, Manchester, UK

Hon. Clinical Professor of Surgery, University of Manchester & Vis. Chair, Manchester Metropolitan University

"Our department has used the AEON Endostapler in over 200 hepato-pancreatobiliary (HPB) surgeries and **we have observed a sizable shift in patient outcomes** for both liver and pancreas transectional procedures.

In pancreatic surgery, our unit has seen a **three-fold reduction in pancreatic leak rate** for lateral/distal pancreatectomy which has had a positive knock-on effect with a reduction in length-of-stay and morbidity of patients.

In terms of stapler handling, I have found the firing is much smoother and the haptic feedback is second to none, allowing us to feel what sort of tissue we're dealing with. Importantly the weight of the device provides excellent stability and manipulation inside the abdomen, making it easy and above all safe to use. We certainly consider it a superior product - **the Rolls Royce for HPB surgeons.**"



# Clinical Evidence

## Preliminary experience in Laparoscopic distal pancreatectomy using the AEON™ endostapler

Aali J Sheen, SK Bandyopadhyay, M Baltatzis, R Deshpande, S Jamdar, N de Liguori Carino

Purpose: To investigate the effects on pancreatic leak rates as well as other outcome measures with the use of a new innovative endovascular stapler, AEON™.

- Data from patients undergoing distal or lateral pancreatectomy was analysed. Retrospective Review of Prospectively collected Data
- Greater Manchester and Cheshire cancer network
- Jan 2019 - Nov 21: 63 patients (32 males and 31 females)
- Median age: 65 years (range 21-84)
- Open: 17, Lap: 44, Rob: 2
- 27 with Splenectomy, 26 Splen preserving
- Additional Procedure: 11 (Simultaneous hepatectomy, gastrectomy, adrenalectomy or cholecystectomy)
- Exclusion criteria: Abandoned Procedure or Patient not assessed for POPF
- Statistical analysis was performed using SPSS software
- Categorical variables compared using Chi-square test or Fisher Exact test
- Numerical variables using One Way ANOVA test
- Statistical significance was defined as  $p < 0.05$
- Focus of Interest: Demographics, Pancreatic fistula rates, length of stay and comprehensive complication index (CCI)

Division of the pancreas: Lexington AEON stapler (orange cartridge): 14 (22%), Endo-GIA Vascular 43 cases (68%). Lotus Ultrasonic energy device: 5 (8%) and Diathermy: 1 (2%).  
POPF: 35 (Grade A 34, Grade C 1)

- Overall mortality: 80%
- Mean Comprehensive Complication Index (CCI) was 11.08
- Mean CCI with AEON - 4.68, 13.16 with other instruments ( $p=0.022$ )
- Mean length of Stay: Shorter by 4 days in the AEON group (8 and 10 days respectively  $p=0.014$ )
- Reduced in POPF rates in AEON Group: 21.4% Vs 71.1 ( $p=0.022$ )
- No reported returns to theatre for bleeding in either group

Limitation of this study: Retrospective review based on a small cohort of patients

- Notable difference in drain output and drain lipase measurements after switching to the AEON™ stapler were considered important to investigate and report especially as a reduction in the POPF rate is probably the single most important post-operative outcome measurement for distal or lateral pancreatectomy.
- Further evaluation based on larger cohorts is already planned to verify the results of this preliminary evaluation, but this data can recommend that the AEON™ stapler with the Orange cartridge (Open Height 3.25 mm, Closed Height 1.5 mm) has a positive role to play in transection of the pancreas with a comparable if not improved fistula rate.

## 70% Reduction in Post-Operative Pancreatic Fistula (POPF) Rate<sup>4</sup>

88% lower day 3 drain lipase<sup>4</sup>

475 U/L vs. 3951 U/L ( $p=0.022$ )

AEON™

others



4 day shorter length of stay<sup>4</sup>

Average LOS 6 days vs. 10 days ( $p=0.014$ )

“*Notable difference in drain output and drain lipase measurements after switching to the AEON.*”

AEON™

others

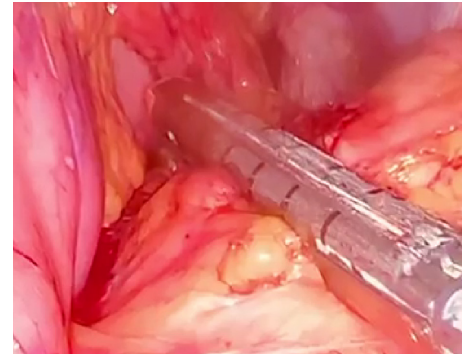
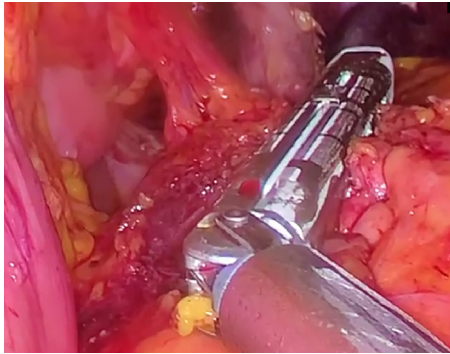




# Clinical Application

## Distal Pancreatectomy

using AEON 60mm Orange Reload

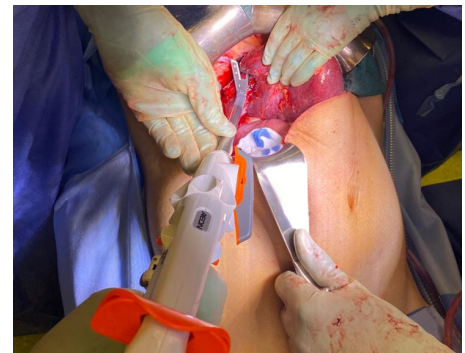
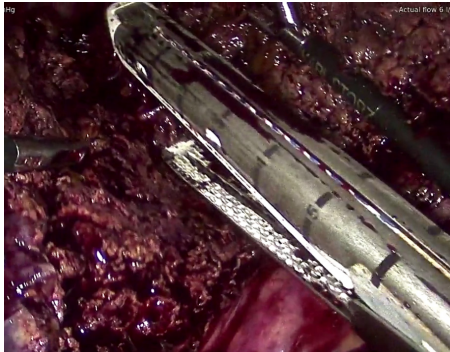


## Splenectomy

using AEON 30mm White Curved Tip Reload

## Hepatic Vein Resection

using AEON 30mm White Curved Tip Reload



## Extended Left Hepatectomy

using AEON 60mm White Reload

## Whipple Procedure

using AEON 60mm White Reload



Disclaimer: clinical applications for the AEON Endostapler are for illustrative purposes only.  
Reference the instructions for use for intended use of the AEON Endostapler.

# Product Offering

The AEON™ Endostapler is versatile and proven to deliver excellent clinical performance and consistent staple formation across variable tissue types.<sup>1</sup>



Reload Type	Cartridge Lengths	Product Codes	Open Height	Closed Height	Handle Type	Shaft Length	Product Code
Gray	30, 45mm	AESR30G, AESR45G	2.0mm	0.75mm	Short	60mm	AESH060
White	30, 45, 60mm	AESR30W, AESR45W, AESR60W	2.5mm	1.0mm	Medium	160mm	AESH160
Orange	30, 45, 60mm	AESR30R, AESR45R, AESR60R	3.25mm	1.5mm	Long	260mm	AESH260
Purple	30, 45, 60mm	AESR30P, AESR45P, AESR60P	4.0mm	1.8mm			
Black	60mm	AESR60B	5.0mm	2.2mm			
Gray Curved Tip	30, 45mm	ASR30GC, AESC45G	2.0mm	0.75mm			
White Curved Tip	30, 45, 60mm	ASR30WC, AESC45W, AESC60W	2.5mm	1.0mm			
Orange Curved Tip	30, 45, 60mm	ASR30RC, AESC45R, AESC60R	3.25mm	1.5mm			
Purple Curved Tip	30, 45, 60mm	ASR30PC, AESC45P, AESC60P	4.0mm	1.8mm			
Gray Short Tip	30mm	ASR30GS	2.0mm	0.75mm			
White Short Tip	30, 60mm	ASR30WS, ASR60WS	2.5mm	1.0mm			
Orange Short Tip	30, 60mm	ASR30RS, ASR60RS	3.25mm	1.5mm			
Purple Short Tip	30, 60mm	ASR30PS, ASR60PS	4.0mm	1.8mm			

<sup>1</sup>Data on file. <sup>2</sup>Redmann, et al. (2020). Improving hemostasis in sleeve gastrectomy with alternative stapler. Journal of the Society of Laparoscopic and Robotic Surgeons. (24) 4. <https://pubmed.ncbi.nlm.nih.gov/33447003>. <sup>3</sup>Raftopoulos, et al. (2021). Prospective randomized comparison of linear endostaplers during laparoscopic sleeve gastrectomy. <https://clinicaltrials.gov/ct2/show/study/NCT04617574> <sup>4</sup>Sheen et al. Preliminary experience in Laparoscopic distal pancreatectomy using the AEON vascular stapler; PSGBI 2022 Annual Scientific Meeting; Nov 30, 2022; Leeds, UK

© 2022 Lexington Medical, Inc. The third-party trademarks used herein are trademarks of their respective owners. Always refer to the instructions for use for the most recent information. Document control MC-090422 Rev B.