



ELUXEO Surgical System:
empowering IOE capabilities so endoluminal and
MIS surgeons can work together from a single tower



The ELUXEO Surgical System from Fujifilm empowers intra-operative endoscopic capabilities so endoluminal and MIS surgeons can work together from a single tower.

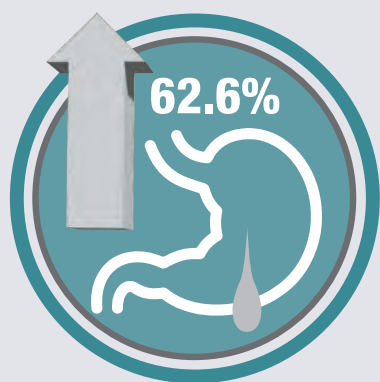
Gastrointestinal (GI) surgeries are emerging to become more commonplace following anastomotic evaluation and assessment, confirmation of pathology, or as combined laparoscopic-endoscopic approaches to patient care.

Fujifilm partners with endoluminal and MIS surgeons and their facilities to bring innovation and efficiency to a new level with the ELUXEO® Surgical System, empowering you to enhance your procedural workflow, and optimize the space in your surgical suite.



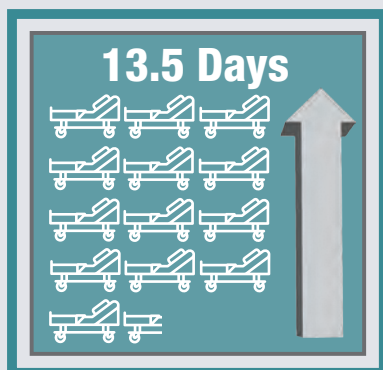
Achieving IOE practice efficiencies are essential in helping reduce complications, readmissions, patient burden, and cost.

Anastomotic leaks drive up hospital admission costs



Of >300,000 colorectal surgery and bariatric surgery patients, combined index hospital admission costs averaged 66.5% greater with those encountering a leak compared to those who did not at the initial stay and within 30 days of the procedure.²

Anastomotic leaks drive up hospital LOS costs



Of >300,000 colorectal surgery and bariatric surgery patients, combined hospital Length of Stay (LOS) averaged 13.5 days more with those encountering a leak compared to those who did not at the initial stay and within 30 days of the procedure.²

Intra-operative endoscopy (IOE) holds promise for helping to improve patient outcomes for both colorectal and bariatric surgery patients.¹

But at what cost?

As demand for these types of procedures increase, the importance of gaining efficiencies in delivering that care become more critical to help reduce complications, readmissions, and facility costs. The technology and the partner you choose to bring these procedures to the forefront of patient care is critical to helping you achieve the goals you have for your practice.

In the case of anastomotic assessment, for example, hospital costs are driven significantly higher through both admissions and length of stay.

Studies suggest that early intervention measures have the potential to avoid downstream hospital costs and to reduce 30-day readmission rates. IOE has been identified as an approach with the potential to identify risk early through visualization.²

1. Lee, S.W., Gregory, D. & Cool, C.L. Clinical and economic burden of colorectal and bariatric anastomotic leaks. *Surg Endosc* (2019). <https://doi.org/10.1007/s00464-019-07210-1>

2. Chadi SA, Fingerhut A, Berho M et al (2016) Emerging trends in the etiology, prevention, and treatment of gastrointestinal anastomotic leakage. *J Gastrointestinal Surgery* 20(12):2035–2051.

What sets the ELUXEO® Surgical System apart?

4K Monitor

Oxygen Saturation
Endoscopic Imaging

Ability to sit on
Endoscopy tower

Ability to perform
CELS procedures
on one fully-configured
tower

Fully integrated
recording capabilities



Endoscopy and Surgical
insufflation options





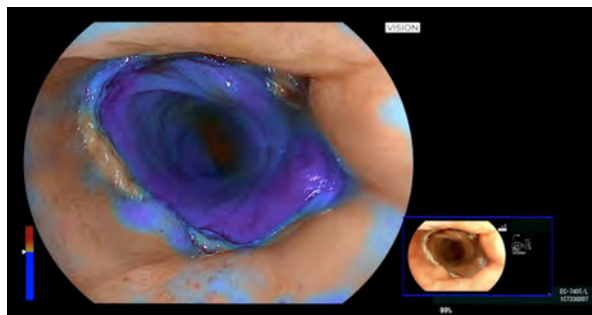
Advancing IOE starts with the advantage of superior imaging.

A powerful video imaging system is the foundation of any advanced endoscopic platform. Fujifilm's ELUXEO Surgical System provides unparalleled image clarity that meets the demands of complex interventional procedures. With its revolutionary 4-LED multi-light technology, ELUXEO empowers you with a unique combination of brilliantly clear White Light Imaging, plus Linked Color Imaging (LCI[®]) and Blue Light Imaging (BLI) modes that enable unparalleled image clarity and enhanced visualization in full HD mode.

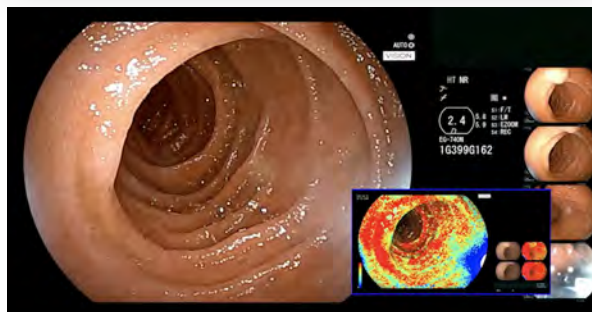
The ELUXEO Surgical System can be combined with ELUXEO[®] Vision: a 5-LED multi-light technology, and the only in-market solution that enables physicians with direct real-time visualization of tissue oxygenation – whether using flexible endoscope technology or rigid chip-on-tip laparoscopes – empowering you to raise the standard of patient care from detection and diagnosis, to surgical planning and treatment. Maintaining oxygen visualization may afford physicians with the time needed to identify tissue perfusion and demarcation lines, even during the most challenging and time-sensitive procedures.



Fujifilm's ELUXEO endoscopic imaging system provides unmatched image clarity and visualization, leveraging 4-LED WLI technology along with LCI mode to aid diagnosis and detection and BLI mode for characterization and delineation (shown here).



ELUXEO Vision enables real-time visualization of tissue oxygenation without the need for fluorescent dyes, allowing physicians to circumvent inherent dye limitations such as time restrictions or the need for consumables.





It's time to reimagine your O.R. Partner.

Fujifilm solutions are founded on more than 85 years of advanced imaging technology and continuous innovation, as well as industry-proven service and support, giving you confidence in placing your trust in our partnership, and empowering physician performance and confidence in conducting both routine and complex cases. Utilizing Fujifilm technologies and services means you gain a true partner in advancing your practice, helping you get the most from your investment and supporting your efforts to improve patient outcomes.



Learn more about Fujifilm's surgical imaging technologies at:

www.fujifilmendosurgery.com | 800.385.4666 | fmsusalesinquiry@fujifilm.com