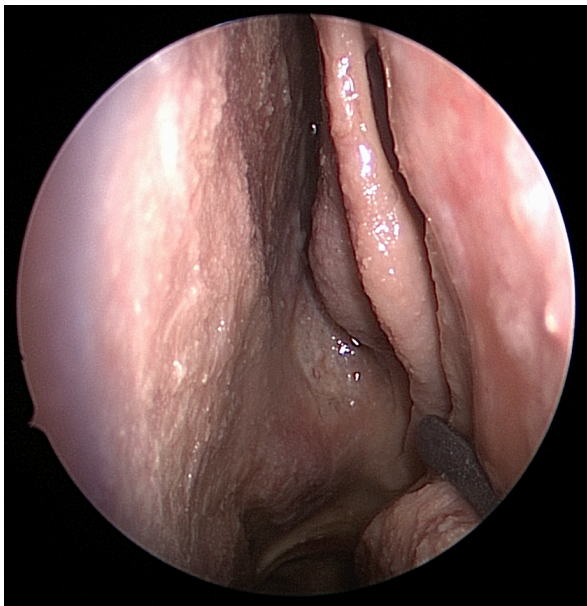




# SURGICAL ANATOMY DISSECTION TRAINING PROGRAM IN ENDOSCOPIC ENDONASAL OTOLARYNGOLOGY

- **Duration:** 2 weeks
- **Tissue:** 1 embalmed cranial specimen per training program/person
- **Eligibility:** fellows, residents, trainees in otolaryngology, and practicing otolaryngologists
- **Objectives:**
  - To learn laboratory techniques, preparation, dissection, 3D photodocumentation
  - To provide detailed step-by-step hands-on training in endoscopic endonasal approaches to the nose and cranial base
- **Availability and registration:** upon request, and depending on availability of staff and laboratory, preferably 3-6 months in advance. Please email Hunter M. Prouty: [Prouty.Hunter@mayo.edu](mailto:Prouty.Hunter@mayo.edu)
- **Location:** Stabile Building 9<sup>th</sup> Floor, Mayo Clinic, Rochester, MN
- **Cost:** \$3200 for trainees (residents and fellows, program director verification and hospital employment verification required) and \$3900 for practicing physicians. Fee is due 30 days prior to the starting day of the training program.  
Includes tissue, equipment, instruments and laboratory staff supervision/mentorship.
- **Directors:** Carlos D. Pinheiro-Neto, MD PhD, Maria Peris-Celda MD PhD,
- **Mentorship:** the dissection results will be guided and evaluated by the neurosurgery and otolaryngology consultant faculty members, direct supervision throughout the program will be provided by Luciano CPC Leonel, PhD
- **Laboratory staff, supervision, coordination:** Luciano CPC Leonel, PhD



## SCHEDULE

### Week 1: Midline approaches and Reconstruction

- **Monday** Endoscopic anterior craniofacial resection: traditional endoscopic approach vs superior ethmoidal approach.
- **Tuesday** Reconstruction Day: nasoseptal flap and variations, lateral nasal wall flap, extended pedicle dissection to the IMAX, resurface of the septum donor site, pericranial flap, temporoparietal fascia flap, temporalis muscle flap.
- **Wednesday** Transsellar and transplanum approaches
- **Thursday** Transclival approaches: nasopharyngeal preservation technique vs nasopharyngeal "U" flap.
- **Friday** Craniovertebral junction

### Week 2: Expansion in the coronal plane

- **Monday** Endoscopic endonasal orbital approaches. Endoscopic transpalpebral approaches to the ethmoidal arteries, orbital fissures, greater wing of the sphenoid bone and middle cranial fossa.
- **Tuesday** Transmaxillary and transpterygoid approaches to the infratemporal fossa and middle cranial fossa.
- **Wednesday** Transcavernous approach, posterior clinoidectomy and Meckel's cave. Contra-lateral transmaxillary approach to the petrous apex.
- **Thursday** Petroclival junction, far medial approach, eustachian tube transposition/resection and parapharyngeal space.
- **Friday** Open transfacial approaches: lateral rhinotomy, Weber-Ferguson, midfacial degloving and maxillary swing.

