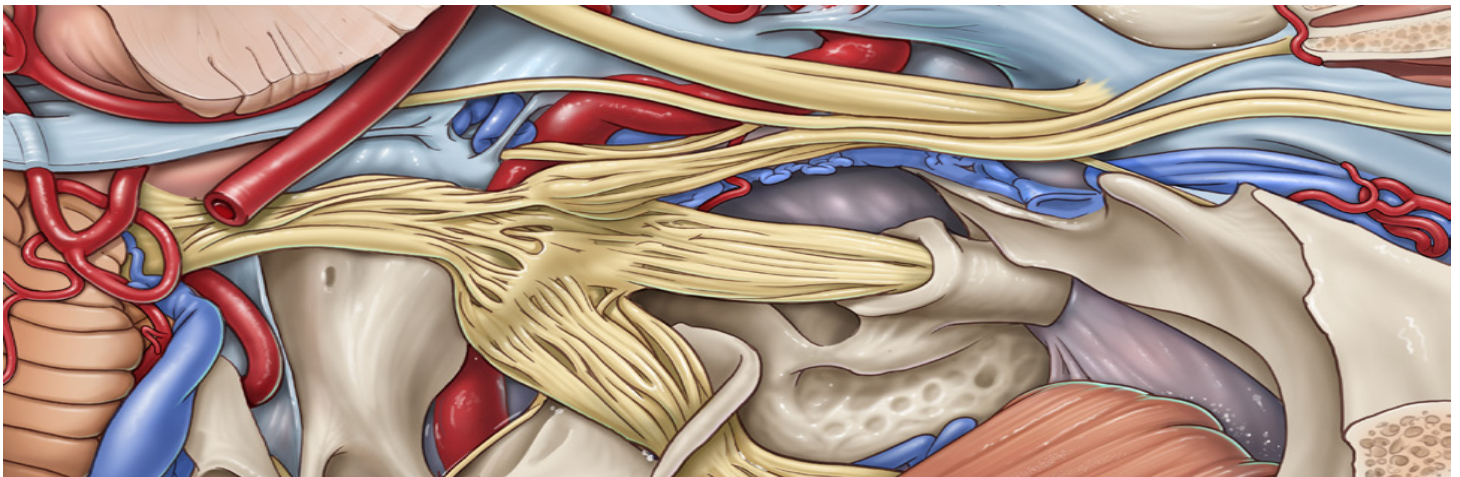


SURGICAL ANATOMY DISSECTION TRAINING PROGRAM IN ENDOSCOPIC ENDONASAL SKULL BASE

Duration: 2 weeks

- **Location:**
Rochester, MN.
- **Objectives:**
 - To learn laboratory techniques, preparation, dissection, 3D photodocumentation
 - To provide detailed step-by-step hands-on training in endoscopic endonasal approaches to the nose and cranial base.
- **Availability and registration:** as listed or upon request, and depending on availability of staff and laboratory.
Please email Hunter M. Prouty: Prouty.Hunter@mayo.edu
- **Cost:** \$3450 for trainees (residents and fellows, program director verification and hospital employment verification required) and \$3950 for practicing physicians.
 - Fee is due 30 days prior to the starting day of the training program.
 - Includes tissue, equipment, instruments and laboratory staff supervision mentorship.
 - **Tissue:** 1 embalmed cranial specimen per training program/person.
- **Directors:** Maria Peris-Celda M.D., Ph.D., Luciano CPC Leonel, Ph.D.
- **Supervision and Mentorship:** Luciano CPC Leonel, Ph.D.



SCHEDULE

Week 1: Midline approaches and Reconstruction

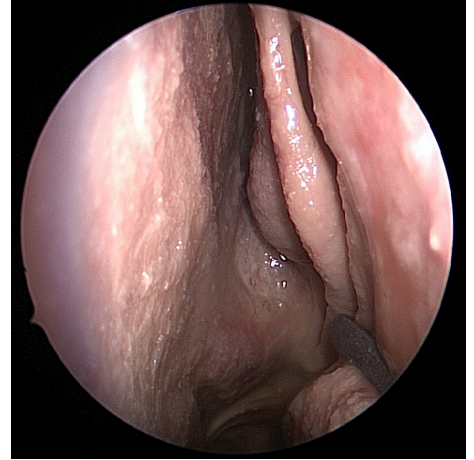
Monday: Endoscopic anterior craniofacial resection: traditional endoscopic approach vs superior ethmoidal approach.

Tuesday: Reconstruction Day: nasoseptal flap and variations, lateral nasal wall flap, extended pedicle dissection the IMAX, resurface of the septum donor site, pericranial flap, temporoparietal fascia flap, temporalis muscle flap.

Wednesday: Transsellar and transplanum approaches.

Thursday: Transclival approaches: nasopharyngeal preservation technique vs nasopharyngeal “U” flap.

Friday: Craniovertebral junction.



SCHEDULE

Week 2: Expansion in the coronal plane

Monday: Endoscopic endonasal orbital approaches
Endoscopic transpalpebral approaches to the ethmoidal arteries, orbital fissures, greater wing of the sphenoid bone and middle cranial fossa.

Tuesday: Transmaxillary and transpterygoid approaches to the infratemporal fossa and middle cranial fossa.

Wednesday: Transcavernous approach, posterior clinoidectomy and Mecke’s cave. Contra-lateral transmaxillary approach to the petrous apex.

Thursday: Petroclival junction, far medial approach, eustachian tube transposition/resection and parapharyngeal space.

Friday: Free/Open dissection

